



TATA HITACHI

Reliable solutions

NEW

TL 340H

PRIME

**YOUR MOST-EFFICIENT
BUSINESS PARTNER**



CEV 5



Engine Gross Power
121 HP



Operating Weight
11,400 kg



Bucket Capacity
1.5 – 2.7 m³

SMART POWERFUL ECO-FRIENDLY

The CEV 5 compliant TL340H Prime is engineered for excellence, delivering unmatched performance, best-in-class fuel efficiency, and superior comfort. With advanced hydraulic technology, innovative power management, and robust telematics, the TL340H Prime Wheel Loader is designed to meet the demands of diverse applications and challenging terrains.

FUEL
SAVINGS UP TO
₹ 5,00,000*
PER YEAR



Hydrostatic Technology:
Smooth, responsive control in any terrain.



Power Optimization:
Powerful Engine for Ultimate Performance.



Enhanced Comfort and Safety:
Reduced vibrations and enhanced safety.



Simplified Maintenance:
Built for easy access and minimal downtime.

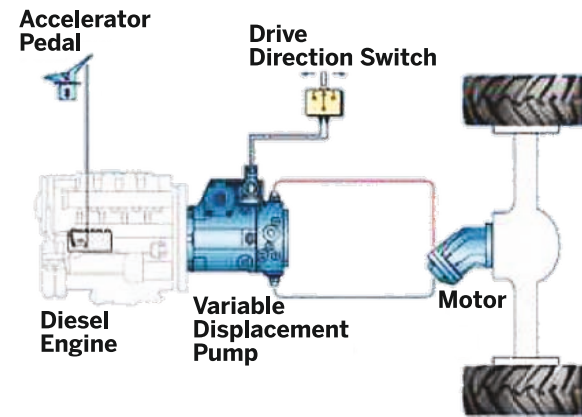


Smart Connectivity
Integrated real-time machine tracking.

*Based on testing done in a controlled and standard environment.
Terms and conditions apply

HYDROSTATIC TECHNOLOGY

- The hydrostatic pump converts mechanical power from the engine into hydraulic flow.
- The hydraulic flow is directly converted back into mechanical power by the motors on the axle, eliminating the need for a transmission.
- Pressing the accelerator increases engine RPM, which boosts hydraulic flow and, in turn, increases speed.



High Fuel Efficiency

The self-locking feature engages when you release the accelerator, stopping movement and saving fuel.

High Breakout Force

The Z-bar linkage delivers high breakout force, ensuring smooth and efficient excavation.

Powerful Tractive Force

The hydrostatic drive delivers high tractive force, ensuring effortless digging with no transmission loss.

Speed for Maximum Productivity

With no gears or clutches, the machine accelerates faster, while the short hydraulic cycle time keeps it ahead, completing tasks at a quicker pace.



POWER OPTIMIZATION

Powerful Engine for Ultimate Performance

- Eco-friendly Cummins QSB 4.5 four-cylinder engine that meets CEV 5 emission standards.
- Delivers 20% higher power and torque.
- Equipped with the latest variable geometry wastegate turbocharger.
- Increases performance at low engine speeds and improves cycle time.
- Features a single-module After Treatment Device (ATD) with an integrated silencer, consisting of DOC, dosing module, DPF, and SCR system.
- 2 work mode options: high tractive effort and high travel speed.



CEV 5

Efficient Hydraulics

- The CEV5 TL340H Prime has been upgraded with energy-efficient implement and travel device that work in harmony with the powerful engine and axles.



YOUR MOST-EFFICIENT BUSINESS PARTNER

KEY BENEFITS

- High Fuel Efficiency
- Swift Operation
- High Power



Excellent Visibility
360° visibility from the cab, supported by a camera and monitor with recording capability.



Advanced Monitoring
User-friendly multi-functional display



Superior Comfort
All new cabin with reclining seat and repositioned AC vents



Hydrostatic Drive Technology
Provides superior efficiency and lower maintenance compared to hydro-dynamic systems.



Advanced Safety Features
ROPS & FOPS Level II compliant cabin



Premium Features
ECO mode
Adjustable steering column
Double door



Enhanced fuel efficiency
CEV stage 5 complaint, with easy switch over to eco mode



Low Running Costs
Less fuel consumption during load and carry operations



High Tractive Effort
Hydrostatic drive and Limited slip differential



Easy Maintenance Access
Easy-to-open wide engine covers



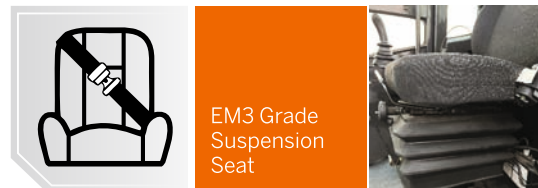
User-friendly Design
Effortless single pilot operating lever and power steering system.



ENHANCED COMFORT AND SAFETY

The Tata Hitachi TL340H Prime features a unique approach to ergonomics, designed with the operator in mind. With a range of enhancements that elevate the user experience, you can expect best-in-class comfort, visibility, and overall ergonomics.

- ROPS/FOPS-II compliant cabin
- Visibility in compliance with ISO 5006
- Tinted cabin glass
- Optional heating system (HVAC)
- Top and rear AC vents
- Fresh air intake
- Upgraded side console
- Reclining seat
- EM-3 grade suspension seat
- Wiper with washer nozzle
- Rear view camera
- Multi-functional LCD display
- Bluetooth music system



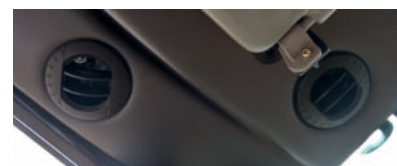
Multi-color monitor for fuel, urea, speed, and more



Accessible controls within easy reach



FM radio with USB port with bluetooth connectivity



Heating, Ventilation and Air Conditioning (HVAC)



Adjustable steering column



Smooth bucket and arm control with pilot lever



Clear audio speaker



SIMPLIFIED MAINTENANCE

- Easy maintenance with long service intervals and quality components.
- Ground-level access to machine components.
- High-clearance engine hood and dual side panels for full engine access.
- Optional centralized lubrication system.
- Factory-fitted remote lubrication for rear axle mounting.
- Single module ATD system for ease of maintenance.
- Increased DEF tank capacity - 60L.



Ground-level access to machine

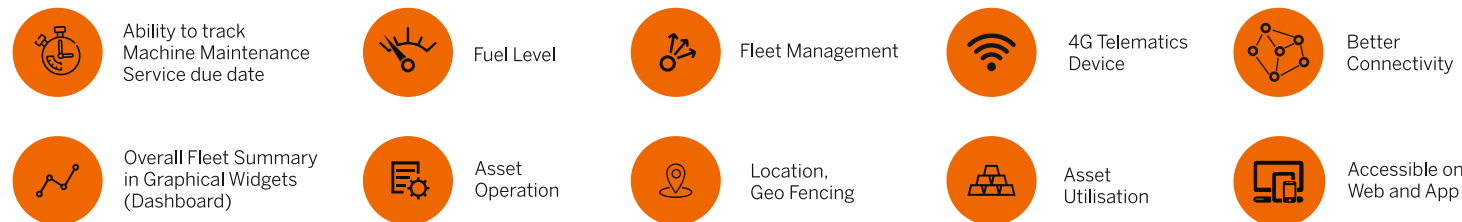
Change Intervals

Engine oil filter	1000 Hours
Fuel filter	1000 Hours
Water separator filter	1000 Hours
Supply module filter	2000 Hours
DEF filter	2000 Hours
Hydraulic oil	4500 Hours
Engine oil	1000 Hours
Coolant (50:50)	4000 Hours



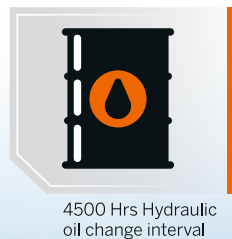
Side covers for easy access to batteries

SMART CONNECTIVITY



SUPPORT SOLUTIONS

- Widespread dealer network for easy availability of spare parts
- Field diagnostic vehicle and mobile workshop for quicker after-sales support
- Extended service intervals for reduced maintenance cost



4500 Hrs Hydraulic oil change interval



Mobile Workshop



Field Diagnostic Vehicle



SUPPORT CHAIN

SPECIFICATIONS

ENGINE

Engine model name Cummins B4.5
Type 4 Cylinder Water Cooled Direct Injection
Aspiration Turbocharged with charge air cooler
No. of cylinders 4
Max. Power 121 HP @ 2200 RPM
Max Torque 500 Nm @ 1500 RPM
Emission Norms CEV 5
Batteries 2 X 12V
Bore x Stroke 107x124
Piston Displacement 4.5L
Air Cleaner.....Two element dry type with restriction indicator
After Treatment.....DOC+SCR+DPF system

TRAVEL DRIVE

Stepless Hydrostatic Travel Drive

Swash plate type variable displacement pump and two variable displacement axial piston motors in closed loop circuit. Direction of travel is reversed by changing the flow direction of the variable displacement pump.

Control

Stepless control through accelerator pedal. The FNR (Forward n Reverse) lever is used to control, forward & reverse travel and the speed selector is used to select the travel speed range.

POWER TRAIN

Transmission ... Electro-hydraulically controlled Hydrostatic transmission
Selector Range I 0 to 6±2 km/hr
Speed Selector Range II 0 to 30±2 km/hr

The speed of the vehicle is same as BS-IV, however for digital display monitor, as per IS-11827, display speed can vary from actual speed to [Actual speed +(0.1 x actual speed) + 4] km/hr

AXLE AND FINAL DRIVE

Drive system 4 wheel drive system
Front Fixed to front frame
Rear Centre pivot on main frame (oscillating type)
Reduction and Differential Gear
Front - Self Locking Limited Slip Differential
Rear - Open Differential
Oscillation angle Total 24° (+12°, -12°)

TYRES

No. of Tyres 4
Tyre Size 14x25 20PR
Tyre Pressure 4.8 kg/cm2

BRAKES

Service Brakes:

Full Hydraulic braking: Self-adjusting wet type disc brake integrated in wheel hub acts on all 4 wheels. HST (hydrostatic transmission) system provides additional Hydraulic braking capacity.

Parking Brake:

Solenoid actuated spring applied Hydraulically released at front axle.

STEERING SYSTEM

Type Articulated frame steering
Steering mechanism Fully Hydraulic power steering with orbitrol
Steering angle Each direction 38°; Total 76°
Relief pressure 180 bar
Cylinders Double Acting Piston Type
No. x bore x stroke 2x70x313

HYDRAULIC SYSTEM

Arm and bucket are controlled by pilot operated lever
Arm Controls 3 position valve - raise, hold, lower
Bucket Controls 3 position valve - roll back, hold, dump
Main pump Load sensing variable displacement axial piston pump
Main pump flow rate 132lpm @ 2,200 rpm
Relief pressure setting 250 Bar

HYDRAULIC CYCLE TIME (IN SECONDS)

Lift arm rise 5.2
Lift arm lower 3.1
Bucket dump 1.2
Total Hydraulic Cycle Time..... 9.5

SERVICE REFILL CAPACITIES

Fuel tank 165 L
Engine coolant 22 L
Engine oil 17 L
Front axle 17 L
Rear axle 17.5 L
Hydraulic tank 130 L
DEF Tank 60 L

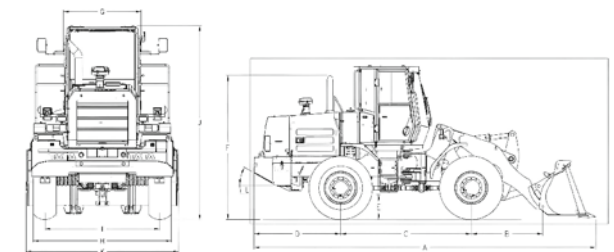
OPERATING DATA

Rated payload 3,375 kg
Breakout force 10,543 kgf
Tipping load (straight) 8264 kg
Tipping load (38° articulated) 7340 kg
Operating weight 11400 kg

Turning radius

Outside wheel 5140 mm
Outside bucket 5700 mm

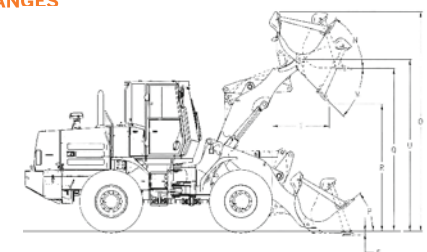
STATIC DIMENSIONS



Particulars	HD Bucket 1.5 m ³ (BOT)	STD Bucket 1.8 m ³ (BOT)	HD Bucket 2.0 m ³ (BOT)	Coal Bucket 2.5 m ³ (BOT/BOCE)	LM Bucket 2.7 m ³ (BOCE)
A Overall length with std. bucket	7101	7440	7255	7418	7445
B Front Axle to pivot pin	1534	1534	1534	1534	1534
C Wheel base	2840	2840	2840	2840	2840
D Rear axle to counter weight	1885	1885	1885	1885	1885
E Min. ground clearance	479	479	479	479	479
F Height over exhaust	3110	3110	3110	3110	3110
G Width over cab	1305	1305	1305	1305	1305
H Width over tyres	1940	1940	1940	1940	1940
I Wheel tread	2325	2325	2325	2325	2325
J Height over cab	3278	3278	3278	3278	3278
K Bucket width	2572	2560	2560	2560	2560
L Departure angle	30°	30°	30°	30°	30°

All dimensions are in mm

WORKING RANGES

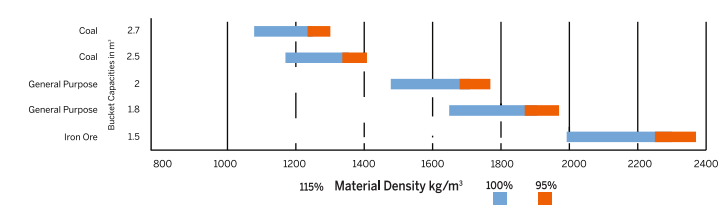


Particulars	HD Bucket 1.5 m ³ (BOT)	STD Bucket 1.8 m ³ (BOT)	HD Bucket 2.0 m ³ (BOT)	Coal Bucket 2.5 m ³ (BOT/BOCE)	LM Bucket 2.7 m ³ (BOCE)
M Dump angle Max	45°	45°	45°	45°	45°
N Roll back angle at full height	58°	58°	58°	58°	58°
O Max operating height	4674	4768	4876	4976	5002
P Roll back at ground level	42°	42°	42°	42°	42°
Q Load over height	3573	3573	3573	3573	3573
R Dump height (45° dump)	2858	2777	2732	2635	2612
S Dig depth	79	79	79	79	79
T Reach at dump height	1077	1250	1287	1366	1384
U Height of bucket hinge pin, fully raised	3751	3751	3751	3751	3751

*Bolt on Teeth (BOT) and Bolt-on Cutting Edge (BOCE)

All dimensions are in mm

BUCKET SELECTION CHART



STANDARD AND OPTIONAL EQUIPMENT

ENGINE					
Auto idle	●	Rear lights in tail light cover (2)	●	Windshield washer front	●
Pre-cleaner	●	Rear light on cab (2) [LED]	○	Windshield wiper front	●
Air filter double elements	●	POWER TRAIN		MONITOR SYSTEM	
Cartridge-type engine oil filter	●	Differential	●	Gauge: Coolant temperature, fuel level, battery voltage	●
Cartridge-type fuel pre filter	●	Front LSD (Limited Slip Differential)	●	Indicator lights: Low fuel level, high beam, parking brake, turn signals, work lights	●
Cartridge-type fuel main filter	●	Remote lubrication system for rear axle	●	Indicator on multifunction monitor: Clock, DEF alarm indicator, DEF level gauge, hour meter, seat belt indicator, speedometer, tachometer	●
Coolant reservoir sight gauge	●	Forward/reverse lever	●	Warning lights: Air filter restriction, communication system error, discharge warning, engine oil low pressure, engine warning, overheat	●
DEF/AdBlue® tank inlet strainer	●	ECO mode	●	MISCELLANEOUS	
Engine auto shut-down control system	●	Dual work modes	●	Articulation lock bar	●
Cold Start	○	OPERATOR'S STATION		Auto Fire Detection and Suppression System (AFDSS)	○
Fan guard	●	Adjustable steering column	●	Auto Centralized Lubrication System (ACLS)	○
Standard fin pitch radiator	●	AM/FM radio with AUX and Bluetooth for digital audio player	●	Counterweight, built in	●
HYDRAULIC SYSTEM		Air conditioner with single fresh air filter	●	Drawbar with locking pin	●
Close loop system for travel	●	Cabin heating (HVAC)	○	Fenders for 14x25 (Front & rear fenders with mud flaps)	●
Open loop system for implement	●	Fan	●	DEF regeneration switch	●
Hydraulic filter	●	Electronic accelerator pedal	●	Emergency stop switch	●
Reservoir sight gauge	●	Rear view camera & monitor with recording system	●	Front windshield guard	●
BRAKE SYSTEM		Rear view mirrors		InSite Telematics	●
Inching feature	●	Outside(2)	●	3 Piece Rim	○
Self-adjusting wet type disc brake Integrated in wheel hub on all 4 wheels	●	Retractable seat belt	●	Lift & tie down provision	●
Solenoid actuated spring-applied/ hydraulic-released parking brake	●	Double door	●	Battery cover with locking bracket	●
Parking brake alert	●	ROPS (ISO3471), FOPS (ISO3449): multi-plane isolation mounted for noise, vibration reduction	●	Lockable engine cover	●
Parking brake electronic interlock	●	Rubber floor mat	●	Lockable fuel refilling cap	●
TIRES		Weight adjusted suspension seat: fabric, adjustable for weight- height, reclining angle, armrest	●	Rear licence plate bracket	●
14x25-20PR	●	Steering system	●	Standard tool kit	●
ELECTRICAL SYSTEM		Wheel steering	●	Dozer	○
Backup alarm	●	Storage	●	Side Dump Bucket	○
Standard batteries (110A-700cc)	●	Bottle holder	●		
Battery disconnect switch	●	Sun visor	●		
LIGHTS		Texture steering wheel with spinner knob	●		
Brake & tail lights	●	Tilted safety glass			
Headlights	●	Front windshield laminated	●		
Beacon lamp	○	Others: tempered	●		
Turn signal with hazard switch	●				
Work lights	●				
Front light on cab (2) [LED]	●				

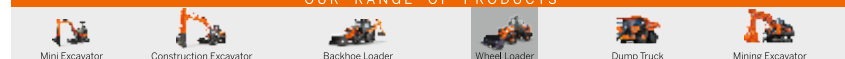
● Standard
○ Optional

Tata Hitachi Construction Machinery Company Private Limited

Registered Office: Jubilee Building, 45 Museum Road, Bangalore, India 560025
Telephone: +918066953301 / 02 / 03 / 04 / 05 | Email: info@tatahitachi.co.in



OUR RANGE OF PRODUCTS



Authorised Dealer

These specifications are subject to change without prior notice. The machine depicted may vary from the actual machine. Please contact our nearest office for latest specifications. Accessories shown here are not part of the standard equipment. Performance of the machine may vary with site and operating conditions encountered.