



**TATA HITACHI**

Reliable solutions

**NEW**

**SHINRAI**

• RELIABLE • TRUSTWORTHY • CAPABLE

**PRIME**



**CEV5**



74.3 HP  
Engine Gross Power



STD: 8120 kg  
4WD: 8220 kg  
Operating Weight

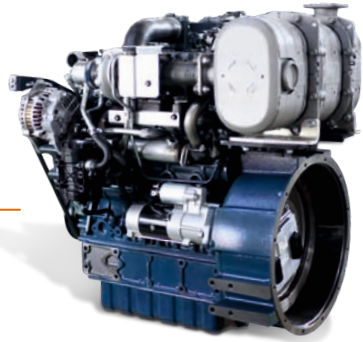


Backhoe : 0.27 m<sup>3</sup>  
Loader : 1.1 m<sup>3</sup>  
Bucket Capacity



## RELIABLE JAPANESE ENGINE

New fuel efficient  
CEV 5 Japanese  
Engine



Engine



Fuel Injection Pump

- Superior engine performance
- Engine control unit (ECU) equipped with CRDI (Common Rail Direct Injection) system - Provides higher output power and torque rise while offering exceptional fuel efficiency
- 4 valve per cylinder
- Engine mounted After Treatment Device (DOC – Diesel Oxidation Catalyst + DPF – Diesel Particulate Filter)
- Automatic fuel priming system
- Rotary fuel injection pump



## EFFICIENT HYDRAULIC SYSTEM

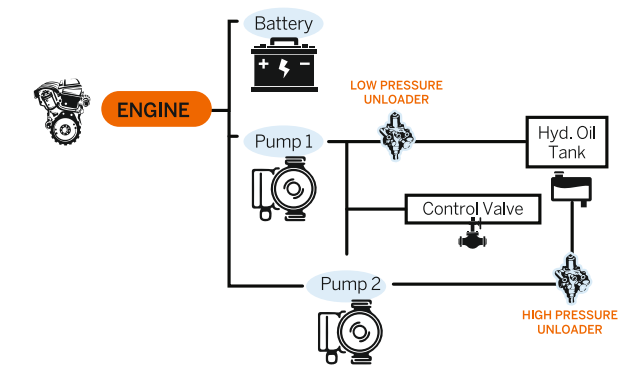


Control Valve



Hydraulic Pump

- Provides great performance with fuel efficiency
- High/Low pressure unloader systems ensure optimum hydraulic oil, when needed
- Ensures optimal utilisation of engine and hydraulic power
- Long lasting hydraulic hoses for superior life



## HEAVY DUTY DRIVE LINE



Transmission



Axle

- Electronically controlled parameters for optimized performance and increased life
- Proven transmission and axle system
- 4 wheel drive\*\*



## SAFE AND COMFORTABLE OPERATOR CABIN

Meets FOPS level-II  
and ROPS safety  
requirements as  
standard



- Well ventilated and spacious cabin
- Excellent visibility
- Comfortable operator seat
- Large leg space for comfortable operation
- Ergonomic controls
- User-friendly consoles
- Ample storage space
- Multi-functional digital display
- Air-conditioner\*\*
- Powerful music system with FM, USB, AUX, Bluetooth and calling facility
- Quieter engine
- Ergonomically inclined rear side cabin floor for operator comfort during backhoe operation
- Pocket mesh for keeping documents and mobile phones





### New CEV 5 Engine <sup>1</sup>

Japanese fuel efficient, compact and powerful engine with low noise and vibration

### Carraro, Synchro Shuttle Transmission and Heavy-Duty Axle <sup>1</sup>

World renowned and market proven aggregates that enhance Reliability and Durability

### Parallelogram Bar Mechanism <sup>2</sup>

Provides high crowding force and uniform movement of the loader bucket

### 21' High Flow Fan <sup>2</sup>

Enhances the engine performance in high temperature and dusty conditions

### Efficient braking system <sup>3</sup>

Provides safe and effective stopping with minimal effort

### Wind Screen Guard \* <sup>3</sup>

Protects against glass breakage from falling materials dropped by loader bucket

### Air Conditioning\* <sup>4</sup>

Helps in comfortable operation and enhances operator efficiency during long working hours

### Spacious ROPS/FOPS Cabin <sup>3</sup>

Ensures operator safety during machine roll over and against falling debris

### 1.96 m Backhoe Arm 2.47 m Backhoe Boom <sup>2</sup>

Extended reach and digging depth with enhanced durability

### 0.27 m<sup>3</sup> Backhoe Bucket <sup>2</sup>

Bigger buckets for easy digging and higher production

### Aesthetic Sheet Metal Fender and Skirt <sup>2</sup>

Gives a premium look with high durability and provides better protection for internal components

### Standard Tilt Dump Bucket and Optional 6-in-1 Bucket <sup>2</sup>

Sturdy buckets for wide range of applications

### 2.4 m Loader Arm <sup>2</sup>

Enables easy material loading into the center of high sided trucks

### Front Counterweight <sup>2</sup>

Provides additional stability on rough terrains and inclines

### Wider Tyres\* <sup>2</sup>

With GP (for general construction and road work) and HD (for rocky, muddy or high load conditions) options

\*Optional



## 4G TELEMATICS SUITE

**inSite**  
INSIGHTS INTO YOUR JOB SITE



- GPS and GPRS based remote tracking through InSite
- Monitors machine location and operations
- Offers information about the machine and the fleet



## ASSURED SERVICE SUPPORT

Hydraulic  
oil change interval  
of 4500 hours



Ground-Level Inspection

- Warranty, extended warranty and post-warranty services.
- On-site services through a wide network of dealerships
- Fault codes display in the cluster for ease of maintenance and troubleshooting
- Field diagnostic vehicle for immediate on-site resolution
- On-site and plant-based training programmes



Field Diagnostic Vehicle



## WIDE RANGE OF ATTACHMENTS





## SPECIFICATIONS

## ENGINE

Make .....	Kubota
Model .....	V3800-CR-TE5
Type .....	Turbo-charged, direct injection
Gross Power .....	74.3 HP (55.4 kW) @ 2,200 RPM
Max. Torque .....	310Nm @ 1,500 RPM
Battery (with cut-off switch) .....	12 V, 150 Ah
No. of Cylinders .....	4 nos
Bore .....	100 mm
Stroke .....	120 mm
Displacement .....	3.7 L
Alternator .....	100Amps

## HYDRAULIC SYSTEM

Excellent Hydraulic System (EHS) with Tandem gear pump for lower fuel consumption  
System Pressure ..... 245 bar  
Max. Pump Flow ..... 113 lpm @ 1,950 RPM  
**Control Valve:** Sectional valves that are individually replaceable.

## TRANSMISSION

- \* Equipped with Carraro-make synchro-shuttle transmission.
  - \* Solenoid-type mechanism allows smooth, easy forward and reverse movements.
- Transmission allows for four forward and two reverse speed.

## AXLE

## Front Axle

- Heavy-duty, non-powered axle
- Floats up to +/-8 degrees to handle uneven terrains
- 4 WD Front Axle, King Pin Angle=7°, Camber Angle=1.5, Ratio Total-13,714:1

## Rear Axle

- Rear heavy-duty Carraro axle
- High brake torque

## SPEEDS

Speeds @ 1950 rpm with standard tyres

## Forward

1st .....	5 kmph
2nd .....	8 kmph
3rd .....	17 kmph
4th .....	32 kmph

## Reverse

1st .....	6 kmph
2nd .....	9 kmph
3rd .....	Not recommended
4th .....	Not recommended

## BRAKES

Service Brake: Oil-immersed wet disc, hydraulic-actuated with independent pedals for better control in narrow spaces  
Parking Brake: Hand-operated disc brake on the rear axle

## REFILL CAPACITY

Fuel Tank .....	128 L
Engine Oil .....	13.2 L
Engine Coolant .....	14.4 L
Transmission Oil .....	16 L
Rear Axle Oil .....	17.1 L
Hydraulic Oil Refill .....	86 L
Front Axle-Live .....	9.1 L [4WD]

## BACKHOE PERFORMANCE

Backhoe Bucket digging force .....	5,685 kgf	Backhoe Arm Length .....	1.96 m
Backhoe Arm digging force .....	3,220 kgf	Backhoe Boom Length .....	2.47 m
Slider Frame Travel .....	1,050 mm	Bucket width .....	784 mm

## LOADER PERFORMANCE

Below ground dig depth .....	110 mm
Loader bucket break-out force .....	6,580 kgf
Loader arm break-out force .....	5,488 kgf
Payload .....	1,920 kg
Loader Bucket capacity .....	1.1 m <sup>3</sup>

## BACKHOE BUCKET OPTIONS

Type	Bucket size	Bucket width	Bucket weight	No. of tooth point
Standard bucket	0.27 m <sup>3</sup>	784 mm	220 kg	5
Heavy duty bucket	0.22 m <sup>3</sup>	695 mm	195 kg	5
Trench bucket	0.18 m <sup>3</sup>	600 mm	216 kg	5
Trench bucket	0.12 m <sup>3</sup>	1.5 ft	135 kg	3
Trench bucket	0.09 m <sup>3</sup>	1 ft	122 kg	3
Ditch cleaning bucket	0.35 m <sup>3</sup>	945 mm	220 kg	NA

## LOADER BUCKET OPTIONS

Type	Bucket size	Bucket width	Bucket weight	No. of tooth point
Loader bucket	1.1 m <sup>3</sup>	2352 mm	560 kg	8
6 in 1 Loader bucket	1.0 m <sup>3</sup>	2350mm	680 kg	8

## STEERING

Type .....	Hydraulic actuation with priority for smooth control
Turning Circle .....	inner wheel braking
Outside Loader Bucket .....	11.73 m
Outside Wheels .....	8.6 m

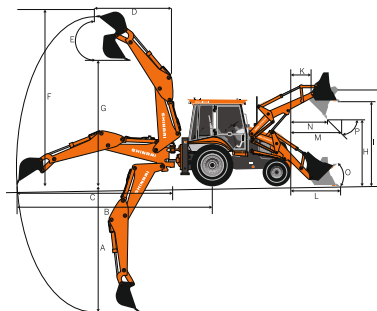
## TYRES

Front (Std.) .....	9x16, 16 PR
Front Wider (4 WD) .....	12.5/80-18, 12 & 14 PR
Rear (Std.) .....	16.9 x 28, 12 PR
Rear (HD) .....	14 x 25, 20 PR

## DIMENSIONS

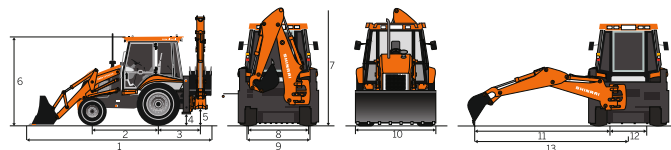
Dim. Notations	Dimension	Description
A	4,700	Max. digging depth
B	6,880	Max. reach from rear axle centre
C	5,440	Max. reach from slew centre
D	2,001	Max. reach during loading from slew centre
E	180°	Bucket rotation angle
F	6,050	Max. cutting height in backhoe (Stabilizer fully extended position)
G	4,200	Max. loading height in backhoe (Stabilizer fully extended position)
H	2,720	Dump height
I	3,305	Load over height
J	3,550	Pin height
K	367	Pin forward reach
L	1,620	Reach at ground level
M	1,332	Max. reach at full height
N	860	Reach in bucket dump position
Bucket Angles		
O	45°	Bucket roll-in angle
P	45°	Bucket rotation angle

All dimensions are in mm



Dim. Notations	Dimension	Description
1	6,040	Transport length
2	2,130	Wheel base
3	1,370	Slew centre to rear axle centre
4	320	Minimum ground clearance
5	485	Slew ground clearance
6	2,970	Height of cabin
7	3,530	Machine Transport Height
8	1,900	Front wheel tread width
9	1,700	Rear wheel tread width
10	2,354	Loader bucket width
11	5,520	Max. side reach to slew centre
12	1,050	Total side-shift travel
13	6,050	Max. side reach to machine centre

All dimensions are in mm | All dimensions, weights and timings are variable within 1.5%



## Tata Hitachi Construction Machinery Company Private Limited

Registered Office: Jubilee Building, 45 Museum Road, Bangalore, India 560025  
Telephone: +918066953301 / 02/03/04/05 | Email: info@tatahitachi.co.in



## OUR RANGE OF PRODUCTS



Authorised Dealer

These specifications are subject to change without prior notice. The machine depicted may vary from the actual machine. Please contact our nearest office for latest specifications. Accessories shown here are not part of the standard equipment. Performance of the machine may vary with site and operating conditions encountered.