



TATA HITACHI

Reliable solutions

NEW

SHINRAI

• RELIABLE • TRUSTWORTHY • CAPABLE

PRO



CEV 5



Engine Gross Power
55 HP



Operating Weight
8230 – 8450 kg



Bucket Capacity
Backhoe: 0.26 m³
Loader: 1.1 m³

Spacious ROPS/FOPS Cabin³

Better operator safety during machine roll over and against falling objects

**1.96 m Backhoe Arm
2.46 m Backhoe Boom²**

Extended reach and digging depth with enhanced durability

0.26 m³ Backhoe Bucket²

Bigger buckets for easy digging and higher production

Aesthetic Sheet Metal Fender and Skirt¹

Gives a premium look with high durability and provides better protection for internal components

Carraro, Synchro Shuttle Transmission and Heavy-Duty Axle¹

World renowned and market proven aggregates that enhance Reliability and Durability

Efficient braking system³

Provides safe and effective stopping with minimal effort

New CEV 5 Engine¹

Fuel efficient, compact and powerful engine with low vibration

Parallelogram Bar Mechanism²

Provides high lifting force and uniform movement of the loader bucket

20" High Flow Fan²

Enhances the engine performance in high temperature and dusty conditions

2.4m Loader Arm²

Enables easy material loading

1.1 m³ Standard Tilt Dump Bucket and Optional 6-in-1 Bucket²

Sturdy buckets for wide range of applications



¹RELIABILITY ²PRODUCTIVITY ³SAFETY

RELIABLE ENGINE

CRDI Engine

- Superior engine performance
- 4 valves per cylinder
- Rotary fuel injection pump for optimized combustion and improved engine efficiency
- 3 operating modes (Eco/Std/ Power)
- Easy nationwide serviceability

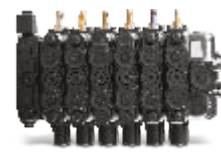
HEAVY DUTY DRIVE LINE

Transmission



Axle

- Market-proven transmission and axle system
- Electrically controlled forward and reverse modes
- Long life with easy maintenance

ELECTRONICALLY CONTROLLED HYDRAULIC SYSTEM

Control Valve



Variable Displacement Hydraulic Pump

- Flow optimization using variable displacement pump and electronic controller, delivering high performance and fuel efficiency
- Ensures optimal utilization of engine and hydraulic power
- Long lasting hydraulic hoses for superior life

SAFE AND COMFORTABLE OPERATOR CABIN

Meets FOPS level-II and ROPS safety requirements as standard

- Well ventilated and spacious cabin
- Excellent visibility
- Comfortable operator seat
- Large leg space for comfortable operation
- Ergonomic controls
- User-friendly consoles
- Ample storage space
- Powerful music system with FM, USB AUX, Bluetooth connectivity and hands-free phone connectivity

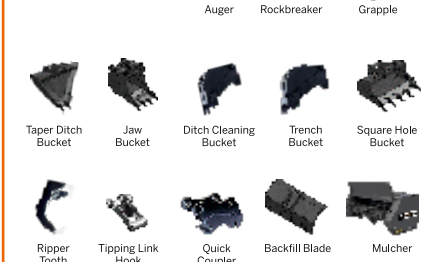
WIDE RANGE OF ATTACHMENTS**LOADER ATTACHMENTS**

Jib Crane

Dozer Blade

Forklift

6-in-1 Loader Bucket

BACKHOE ATTACHMENTS

Taper Ditch Bucket

Jaw Bucket

Ditch Cleaning Bucket

Trench Bucket

Square Hole Bucket

Ripper Tooth

Tipping Link Hook

Quick Coupler

Backfill Blade

Mulcher

ASSURED SERVICE SUPPORT

Hydraulic oil change interval of 4500 hours

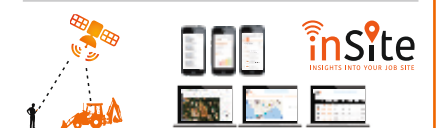


SUPPORT CHAIN



Ground-Level Inspection

- Warranty, Extended warranty and post-warranty services.
- On-site services through a wide network of dealerships
- Fault codes display in the cluster for ease of maintenance and troubleshooting
- Field diagnostic vehicle for immediate on-site resolution
- On-site and plant-based training programmes

inSite
INSIGHTS INTO YOUR JOB SITE

SPECIFICATIONS

ENGINE

Make	Tata Motors
Model	497DI39
Type	Water Cooled, NA, 4 Cylinder CRDI Diesel Engine
Gross Power	55 HP @ 2200 RPM
Max. Torque	225 Nm @ 1400 RPM
Battery	12V, 150 Ah
No. of Cylinders	4 Nos
Bore	97 mm
Stroke	128 mm
Displacement	3784 cc
Alternator	120 Amps

HYDRAULIC SYSTEM

EHS (Electronically controlled Hydraulic System). Variable Displacement Pump with Electric Displacement Control and Load Sense to optimize performance and fuel consumption
 System Pressure 265 bar
 Max. Pump Flow 105 lpm @ 1,950 RPM
Control Valve: Sectional valves that are individually replaceable.

TRANSMISSION

- * Equipped with Carraro-make synchro-shuttle transmission.
- * Solenoid-type mechanism allows smooth, easy forward and reverse movements.
- Transmission allows for four forward and two reverse speeds.

AXLE

Front Axle

- Heavy-duty, non-powered axle
- Floats up to +/-8 degrees to handle uneven surfaces

Rear Axle

- Rear heavy-duty Carraro axle
- High brake torque

SPEEDS

Speeds @ 1950 rpm with standard tyres

Forward

1st	5 kmph
2nd	8 kmph
3rd	17 kmph
4th	30 kmph

Reverse

1st	5 kmph
2nd	9 kmph
3rd	Not recommended
4th	Not recommended

BRAKES

Service Brake: Stepped Bore type, Oil immersed wet disc, hydraulically actuated with independent pedals that enable precise control, allowing shorter turning radii and easier manoeuvring in slushy terrains.

Parking Brake: Hand operated with Disc on Rear Axle

REFILL CAPACITY

Fuel Tank	128 L
Engine Oil	13.5 L
Engine Coolant	14.5 L
Transmission Oil	16.0 L
Rear Axle Oil	17.1 L
Hydraulic Oil Refill	65.0 L

BACKHOE PERFORMANCE

(Forces as per ISO 6015 : 2006)

Backhoe Bucket digging force	6,026 kgf	Backhoe Arm Length	1.96 m
Backhoe Arm digging force	3,087 kgf	Backhoe Boom Length	2.46 m
Slider Frame Travel	1,050 mm	Bucket Capacity	0.26 m ³

LOADER PERFORMANCE

(Forces as per ISO 6015 : 2006)

Below ground dig depth	75 mm
Loader bucket break-out force	5,722 kgf
Loader arm break-out force	5,139 kgf
Payload	1,800 kg
Loader Bucket capacity	1.1 m ³ (STD)

BACKHOE BUCKET OPTIONS

(Bucket capacity as per ISO 7451 : 2007 Heaped)

Type	Bucket size	Bucket width	No. of tooth point
Standard bucket	0.26 m ³	752mm	5
Heavy duty bucket	0.22 m ³	695mm	5
Trench bucket	0.09 m ³	1 ft	3
Trench bucket	0.12 m ³	1.5 ft	3
Ditch cleaning bucket	0.35 m ³	945mm	NA

LOADER BUCKET OPTIONS

(Bucket capacity as per ISO 7546 : 1983 Heaped)

Type	Bucket size	Bucket width	No. of tooth point
Loader bucket	1.1 m ³	2352 mm	8
6 in 1 Loader bucket	1.0 m ³	2350mm	8

STEERING

Type Hydraulic actuation with priority for smooth and better control

Turning Circle

Outside Loader Bucket	11.73 m
Outside Wheels	8.6 m

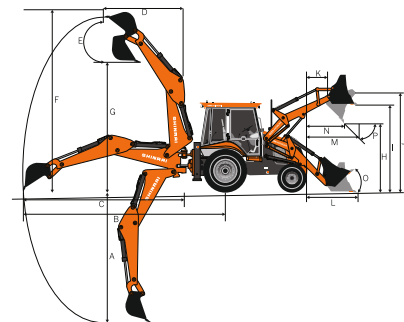
TYRES

Front (Std.)	9x16, 16 PR
Rear (Std.)	16.9 x 28, 12 PR
Rear (HD)	14x25, 20 PR

DIMENSIONS

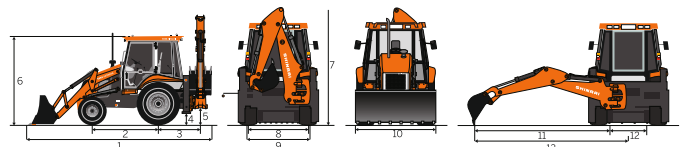
Dim. Notations	Dimension	Description
A	4,700	Max. digging depth
B	6,880	Max. reach from rear axle centre
C	5,440	Max. reach from slew centre
D	2,001	Max. reach during loading from slew centre
E	180°	Bucket rotation angle
F	6,050	Max. cutting height in backhoe (Stabilizer fully extended position)
G	4,200	Max. loading height in backhoe (Stabilizer fully extended position)
H	2,690	Dump height
I	3,305	Load over height
J	3,550	Pin height
K	360	Pin forward reach
L	1,620	Reach at ground level
M	1,332	Max. reach at full height
N	840	Reach in bucket dump position
Bucket Angles		
O	45°	Bucket roll-in angle
P	45°	Bucket rotation angle

All dimensions are in mm



Dim. Notations	Dimension	Description
1	6,040	Transport length
2	2,130	Wheel base
3	1,370	Slew centre to rear axle centre
4	320	Minimum ground clearance
5	485	Slew ground clearance
6	2,940	Height of cabin
7	3,530	Machine Transport Height
8	1,900	Front wheel tread width
9	1,710	Rear wheel tread width
10	2,354	Loader bucket width
11	5,520	Max. side reach to slew centre
12	1,035	Total side-shift travel
13	6,050	Max. side reach to machine centre

All dimensions are in mm | All dimensions, weights are variable within 1.5%



Tata Hitachi Construction Machinery Company Private Limited

Registered Office: Jubilee Building, 45 Museum Road, Bangalore, India 560025

Telephone: +918066953301 / 02/03/04/05 | Email: info@tatahitachi.co.in



www.tatahitachi.co.in

1800 121 6633



OUR RANGE OF PRODUCTS



Authorised Dealer

These specifications are subject to change without prior notice. The machine depicted may vary from the actual machine. Please contact our nearest office for latest specifications. Accessories shown here are not part of the standard equipment. Performance of the machine may vary with site and operating conditions encountered.