

ZAXIS490H **ULTRA**



HYDRAULIC EXCAVATOR

Model Code : ZX490H-5A

Engine Rated Power : 257 kW (345 HP)

Operating Weight : Backhoe: 47 359 kg

Shovel : 47 759 kg

Backhoe ISO Heaped : 1.9 - 3.1 m³

Loading shovel ISO Heaped : 2.6 m³

ZAXIS Empower your Vision.

New ZAXIS provides reliable solutions: impressive fuel economy, swift front movements, and easy operation. You'll also find Hitachi technological prowess and expertise, such as the optimized hydraulic system and engine.

New ZAXIS features the key benefits of high quality, low fuel consumption, and high durability, all of which serve to ensure low running costs.

New ZAXIS, which is empowered by comprehensive evolution, will realize customers' visions and dreams, and pioneer your colorful future.



More Production with Excellent Performance

Page 4-5

- Swift Front Movements with HIOS* IIIB Hydraulics
- In Pursuit of Yielding More Production
- Reduction in Fuel Consumption
- More Fuel Reduction in the ECO mode
- Easy-to-Use Attachments



No Compromise on Operator Comfort

Page 8-9

- Comfortable operating environment
- Comfort-designed operator seat
- Robust cab
- New, easy-to-use multifunction monitor



Tata Hitachi Support Chain

Page 12-13

- Remote fleet management with Global e-Service
- Parts and service



High Quality and Durability

Page 6-7

- Prestige R&D and Quality Control
- All-New Engine with Enhanced Durability and Reliability
- Rock-Solid, Durable Front Attachment
- Tough Undercarriage on Rough Quarry Sites
- Robust Upperstructure



Simplified Maintenance

Page 10-11

- Grouped Remote Inspection Points
- Fast Lubrication
- Easy-Access to the Upperstructure
- Large Capacity Fuel Tank
- Service intervals



More Production with Excellent Performance



Swift Front Movements with HIOS* IIIB Hydraulics

The HIOS IIIB hydraulic system is designed for efficient use of hydraulic oil pressure in the circuit, by eliminating loss of power and fuel. Swift movements of the front attachment can be achieved by a total control of the boom, arm and bucket regeneration system. This Hitachi technological prowess brings about high performance and fuel economy.

*Human & Intelligent Operating System

In Pursuit of Yielding More Production

New ZAXIS 490H ULTRA delivers extra power in excavation and swinging. More specifically, a great swing torque. This boosts productivity in mining operation. The machine powerfully moves the bucket, full of crushed stones, around on mines, and swiftly loads them onto a dump truck. What's more, the power boost mechanism is added to ensure powerful mining.

Reduction in Fuel Consumption

New ZAXIS is a fuel-thrifty excavator that can reduce fuel consumption compared to the conventional model, thanks to the HIOS IIIB hydraulic system and engine control system, thereby reducing CO₂ emissions.

*10% decreased compared to the ZAXIS 490H ULTRA at PWR mode

More Fuel Reduction in the ECO mode

The ECO mode, a new economical mode, can further cut fuel consumption by 8% compared to the PWR mode, without sacrificing digging force by optimal matching of operations.

Easy-to-Use Attachments

The operator can change over valves, adjust extra circuit flow, and check settings from the multifunction monitor next to the operator seat. What's more, 11 jobs, including flow rate setting, can easily be selected by their identified names.



High Quality and Durability



Prestige R&D and Quality Control



Large-sized excavator assembly line



Main frame welding line



Computer-Aided Engineering



Main pump testing area



Simulation testing from operator seat

Hitachi has earned praise for technological prowess and product performance around the world. R&D Division has a track record – including excellent design, stress analysis expertise using CAE system, and abundant production data base. What's more, a large-scale durability test field (427 hm²) allows for a series of stringent testing of new machines. Production Division strives to automatize production processes, including robotic welding, machining, painting, assembling and transferring.

All-New Engine with Enhanced Durability and Reliability

To boost durability and reliability in harsh mining operations, the engine is newly devised, while redesigning its associated systems, such as fuel and coolant lines. This gives an edge in durability. The auto idle stop mechanism is combined to effectively cut fuel consumption and CO₂ emissions.

Rock-Solid, Durable Front Attachment

A very robust and durable boom and arm are adopted for the Front Attachment, allowing it to function optimally at tough job sites such as mines / quarries, where an endless stream of operations is required. The new ZAXIS adopts H-boom and H-arm, using thick plates for high durability. The arm also includes a damage prevention plate and square bars; improving its durability. The arm cylinder, boom cylinders and bucket cylinder for the retract side cushion shocks at the stroke ends to reduce noise and extend the service life.

Tough Undercarriage on Rough Quarry Sites

Tracks are rugged enough to move around on uneven quarry site, with power and stability. Idler brackets are of box-section structure, and strengthened with reinforcing plates to withstand high stresses and resist deformation. The two-step ladders on the side allow easy access to the cab and riding on the machine.

Robust Upperstructure

The upperstructure is reinforced with proven D-section skirt for protection against obstacles, reducing deformation. A large door catch is provided to reduce shocks and jolts from the cab and upperstructure.

No Compromise on Operator Comfort



Comfortable Operating Environment

You'll feel comfortable and confident, with plenty of leg space and excellent visibility when operating in the cab. The new compact console gives more leg space. The new door pillar is shifted rearward by 70 mm to widen an entry space for easy access. A new LED room light, interlocked with the door, turns on when the door opens. The front window is easily removed and stored overhead using slide rails. The overhead window is openable for ventilation. Ample air conditioner vents are located strategically for uniform air circulation inside the cab. The control panel and control levers are arranged within easy reach of the operator. AM/FM radio and AUX port (optional) for a mobile music player are available for a long work day with less fatigue. All these designs focus on operator comfort.

Comfort-Designed Operator Seat

The luxury cloth seat is fitted with a headrest and arm rests for operator comfort. The seat can be adjusted in multiple ways, sliding and reclining, to suit operator's size and preferences. The seat can slide rearward by 40 mm more for added leg space. An air suspension with a heat pad is optional.

Robust Cab

The robust cab, meeting the OPG (Top Guard Level 1), protects the operator from falling objects. The pilot control shut-off lever is provided with a neutral engine start system that permits engine starting only when the pilot control shut-off lever is in Lock position.



New, Easy-to-Use Multifunction Monitor

The new multi-language, multifunction monitoring system comprises a 7-inch high-resolution color monitor and a multifunction controller. The monitor allows the operator to check varying operating variables: hydraulic oil temperature, fuel level, work mode, full-auto air conditioner, AM/FM radio, rear view monitor camera, maintenance support, and attachment flow adjustment. Menu items can be selected and adjusted by a multifunction controller on the control panel. A new rear view monitor camera always displays the view behind the machine.



Simplified Maintenance



Grouped Remote Inspection Points

Inspection points are concentrated inside left and right covers that are readily accessible from ground level for convenient servicing and inspection, including water draining from the fuel tank, replenishment of filters. A lid behind the cab door is available for easy replacement of the air conditioner filters for fresh air.

Fast Lubrication

The arm and boom have their own centralized greasing points for fast lubrication. An electric grease gun with hose-reel or an optional auto-grease lubricator is also available for faster greasing / lubrication.

Easy-Access to the Upperstructure

A large sidewalk is provided on the left side of the cab, making it easy to access the engine from the ladder while handrails are provided and sufficient slip-resistant plates for safety.

Large Capacity Fuel Tank

Equipped with a large capacity fuel tank for longer operations.

Service intervals



Tata Hitachi Support Chain

A full customer support system offered on buying a Tata Hitachi machine.

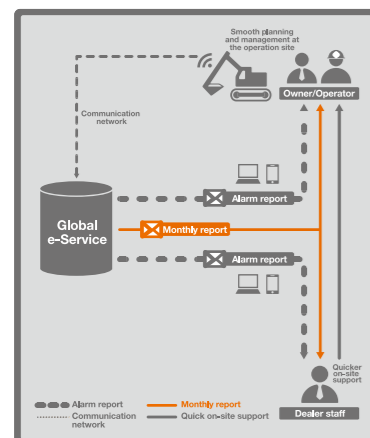


Monitor your machines closely with ConSite

Data Services



ConSite is a consolidated solution service that links you to your machines on the construction site. Through this system, we present your machine's key operational data with meaningful insights by tapping into Tata Hitachi's vast experience and database. There are two kinds of report services:



A. Monthly Report
A detailed monthly operational report helps you to analyse and improve the operational efficiency of your machine.

- Consolidated monthly operation reports with advice via email.
 - Alarm or emergency notifications via email.
- These two reports allow you to visualise the operation status of your machine, improve the efficiency of machine management and work closer with Tata Hitachi.

Key Items included in the report:

- Status of parameters affecting fuel economy.
- Part wise operations time
- Recommended action

B. Alarm Report

If there is an alarm triggered in the machine and the problem requires urgent attention to prevent downtime, an emergency alarm report will be sent to the registered email addresses so that necessary measures can be taken. This information also flows to your authorised service representatives for smoother coordination and to reduce your machine's downtime.

Key items included in the report:

- Machine identification with hour meter details
- Alarm code / name
- Recommended action

SMART REMOTE MACHINE MANAGEMENT



MONTHLY REPORT VIA E-MAIL

Know everything about your machine & how to increase productivity while reducing costs



CAUTION ALARM

Pre-emptive information of your machine's health



PERFORMANCE ANALYSIS

Benchmarking your machine against similar class machines in the region



EMERGENCY ALARM

Real time notification to you and the dealer to avoid machine breakdowns



SITE EFFICIENCY PARAMETERS

Advises you on ways to fine tune everyday operations



The daily operation reports show in detail when the machine is operating and idle time, which is represented by different colours in the 24-hour timeline.



The calendar's format allows you to see the daily operation times of your machine with ease. This report helps you analyse the operation trend of each machine.

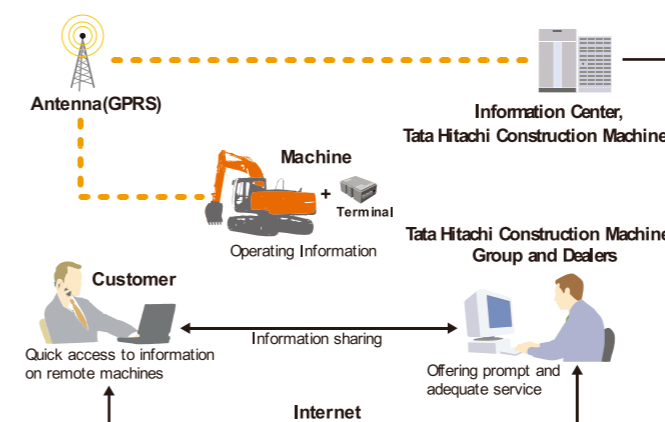


Remote Fleet Management with Global e-Service

Easy access to On-Site Machines through the internet

Global e Service is a convenient and simple system designed to give you valuable information regarding the operations, maintenance, system parameters and alarms of your machines from the convenience of your office. This system can be configured to give you a customised dashboard of the vital parameters that you would like to monitor, to increase productivity and reduce the downtime of your fleet.

The operating data and logs are sent to our servers for processing and then to customers and dealers around the world. This system is available 24 hours a day, all the year round and can be viewed on your laptops and mobile devices through the Internet.



Note: In Some Regions, Global e-Service may not be Available due to Local Regulations.

Main Features of Global e-Service

Global e Service provides easy access to a machine on site conveying operating information and log, including daily operating hours, operations, fuel levels, location, itemised maintenance scheduling, machine's technical parameters and alarm history.



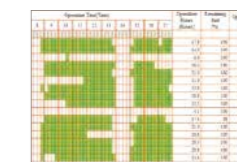
Operation

- Working site of customer machine can be determined.
- Route to working site of customer machine can be determined also.

Country/Region	Alarm Code	Alarm Name	Alarm Category	Alarm Severity
INDONESIA	20101.2	BECH-CH	Engine	1
INDONESIA	20101.2	BECH-CH	Engine	1
INDONESIA	20101.2	BECH-CH	Engine	1
INDONESIA	20101.2	BECH-CH	Engine	1
INDONESIA	20101.2	BECH-CH	Engine	1
INDONESIA	20101.2	BECH-CH	Engine	1
INDONESIA	20101.2	BECH-CH	Engine	1
INDONESIA	20101.2	BECH-CH	Engine	1
INDONESIA	20101.2	BECH-CH	Engine	1
INDONESIA	20101.2	BECH-CH	Engine	1

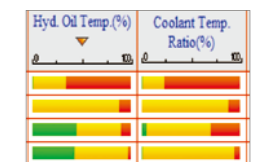
Alarm function

Information of alarms as causes of machine failures can be received in real time.



Hour meter / Daily report

Daily machine operation hours and remaining fuel can be determined.



Operation information

Hydraulic oil temperature, swing hours and other data are determined.

Support Solutions

Full Maintenance Contract by Tata Hitachi is a fully customized service offering for customers having large fleet of machines. Designed to meet specific requirement of individual customers. It maximizes the production by ensuring maximum machine utilization.

Objectives

- Maximize equipment availability
- Minimize operating cost through planned maintenance
- Enhanced reliability and maintainability through monitoring of MTTR and MTBF
- Technical skill development of customer personnel
- Extend equipment life to maximize returns on investment

Benefits

- Higher productivity through increased utilization
- Life cycle maintenance cost known at the start of the contract
- Allows customer to concentrate on their core activity
- Higher equipment availability resulting in leaner fleet size
- Improved cost efficiency through higher utilization and extended equipment life.
- Better resale value of equipment



SPECIFICATIONS

ENGINE

Model	Isuzu GH-6UZ1XKSA-01
Type	4-cycle water-cooled, direct injection
Aspiration	Turbocharged, intercooled
No. of cylinders	6
Rated power	
ISO 9249, net	H/P mode:
(Without Fan)	257 kW (345 HP) at 2 000 min ⁻¹ (rpm)
SAE J1349, net	H/P mode:
(Without Fan)	257 kW (345 HP) at 2 000 min ⁻¹ (rpm)
Maximum torque	1 363 Nm (139 kgf m) at 1 500 min ⁻¹ (rpm)
Piston displacement ..	9.839 L
Bore and stroke	120 mm x 145 mm
Batteries	2 x 12 V / 170 Ah

HYDRAULIC SYSTEM

Hydraulic Pumps

Main pumps	2 variable displacement axial piston pumps
Maximum oil flow ..	2 x 400 L/min
Pilot pump	1 gear pump
Maximum oil flow ..	30 L/min

Hydraulic Motors

Travel	2 axial piston motors with parking brake
Swing	2 axial piston motors

Relief Valve Settings

Implement circuit	31.9 MPa (325 kgf/cm ²)
Swing circuit	28.4 MPa (290 kgf/cm ²)
Travel circuit	35.3 MPa (360 kgf/cm ²)
Pilot circuit	3.9 MPa (40 kgf/cm ²)
Power boost	35.3 MPa (360 kgf/cm ²)

Hydraulic Cylinders

	Quantity	Bore	Rod diameter
Boom	2	170 mm	115 mm
Arm	1	190 mm	130 mm
Bucket	1	170 mm	120 mm

WEIGHTS AND GROUND PRESSURE

Model	Operating wight	Ground pressure	
ZX490H Bachkoe	47 359 kg	0.899 kgf/sq cm2	88.19 kPa
ZX490H Shovel	47 759 kg	0.907 kgf/sq cm2	88.94 kPa

BUCKET AND ARM DIGGING FORCE

Boom length	6.3 m BE-boom		
	2.5 m BE-arm	2.9 m BE-arm	7.0 m BE-arm
Bucket digging force* ISO	282 kN (28 780 kgf)	285 kN (29 130 kgf)	219 kN(22,360 kgf)
Bucket digging force* SAE : PCSA	250 kN (25 570 kgf)	257 kN (26 240 kgf)	219 kN(22,360 kgf)
Arm crowd force* ISO	299 kN (30 520 kgf)	256 kN (26 140 kgf)	122 kN(12,440 kgf)
Arm crowd force* SAE : PCSA	289 kN (29 530 kgf)	249 kN (25 420 kgf)	122 kN(12,440 kgf)

* At power boost

UNDERCARRIAGE

Tracks

Track shoes with triple grousers made of induction-hardened rolled alloy. Heat-treated connecting pins with dirt seals. Hydraulic (grease) track adjusters with shock-absorbing recoil springs.

Numbers of Rollers and Shoes on Each Side

[Fixed Undercarriage]

Upper rollers	2
Lower rollers	8
Track shoes	49
Idler track guard	1
Track guards	Standard
	Full track guard : Optional

Travel Device

Each track driven by axial piston motor through reduction gear for counterrotation of the tracks. Parking brake is spring-set/hydraulic-released disc type.

Automatic transmission system: High-Low.

Travel speeds	High : 0 to 5.5 km/h
	Low : 0 to 3.9 km/h
Maximum traction force ..	329 kN (33 600 kgf)
Gradeability	70% (35 degree) continuous

SERVICE REFILL CAPACITIES

Fuel tank	725.0 L
Engine coolant	58.0 L
Engine oil	41.0 L
Swing device (each side)	6.5 L
Travel device (each side)	11.0 L
Hydraulic system	510.0 L
Hydraulic oil tank	310.0 L

UPPERSTRUCTURE

Revolving Frame

D-section frame for resistance to deformation.

Swing Device

Axial piston motor with planetary reduction gear is bathed in oil. Swing parking brake is spring-set/hydraulic-released disc type.

Swing speed	9.5 min ⁻¹ (rpm)
Swing torque	148 kNm

ZX490H-5A

Independent spacious cab, 1 025 mm wide by 1 817 mm high, The OPG top guard fitted Level II conforms to the related requirements of the International Organization for Standardization (ISO) 10262.

BACKHOE BUCKETS

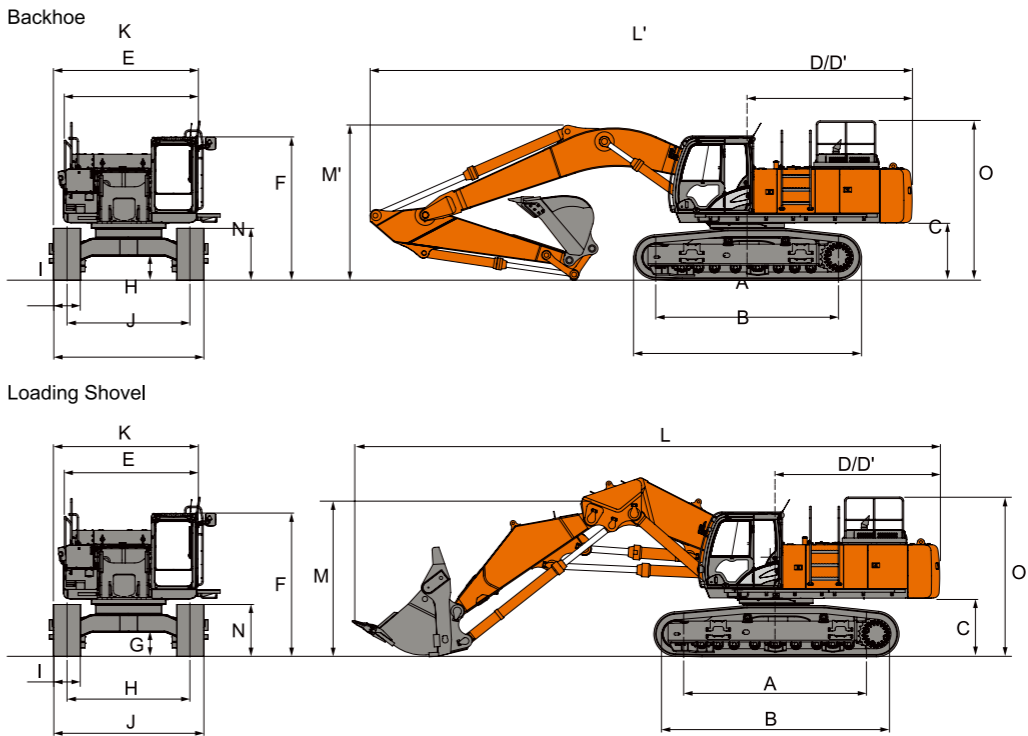
Sl. No.	Type	Capacity*	Width		No.of teeth	Weight	Recommended maximum material density	Recommendation		
			Without side cutter	With side cutter				6.3 m Boom		
								2.5m Arm	2.9m Arm	7.0m Arm
1	GP	3.1m³	1802 mm	1868 mm	6	2360 kg	1800 kg/m³	✓	✗	✗
2	GP	3.0m³	1762 mm	1902 mm	5	2060 kg	1800 kg/m³	✓	✗	✗
3	ROCK	2.5m³	1760 mm	1826 mm	5	2560 kg	2000 kg/m³	✓	✓	✗
4	GRANITE	1.9m³	1400 mm	1466 mm	5	2083 kg	Boulders	✓	✓	✗
5	COAL	3.0m³	1762 mm	1902 mm	No tooth	1910 kg	1000 kg/m³			✓
6	DREDGING	1.0m³	1132 mm	No Side Cutting	No tooth	1227 kg	1800 kg/m³	✗	✗	✓

✓ Option is available * ISO heap

LOADING SHOVEL BUCKET

Sl. No.	Type	Capacity	Maximum width	No. of teeth	Weight
1	Bottom dump type slag handling bucket	2.6 m ³	1943 mm	6	3170 kg

DIMENSIONS



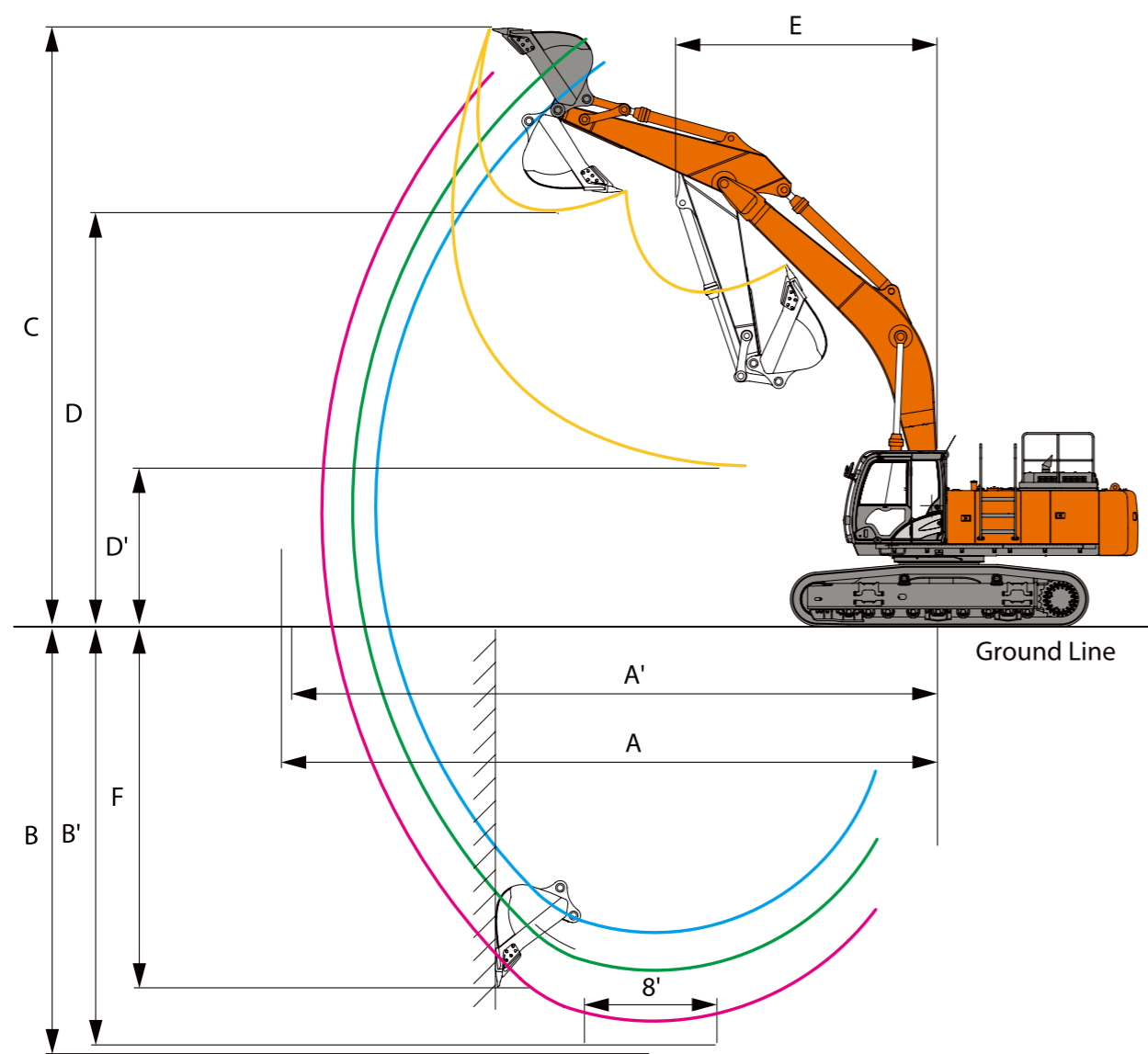
Unit: mm

A	Distance between tumblers	4 040
B	Under carriage length	5 040
*1C	Counter weight clearance	1 230
D	Rear-end swing radius	3 670
D'	Rear-end length	3 660
E	Overall width of upperstructure	3 480
F	Overall height of cab	3 170
*1G	Min. ground clearance	495
H	Track gauge	2 740

*1Excluding track shoe lug G: Triple grouser shoe

I	Track shoe width	G 600
J	Undercarriage width	3 340
K	Overall width	3 820
L	Overall length	12 110
M	Overall height of boom	4 000
L'	Overall length	12 010
M'	Overall height of boom	3 480
N	Track height	1 150
O	Overall height of base machine	3 540

WORKING RANGES BACKHOE

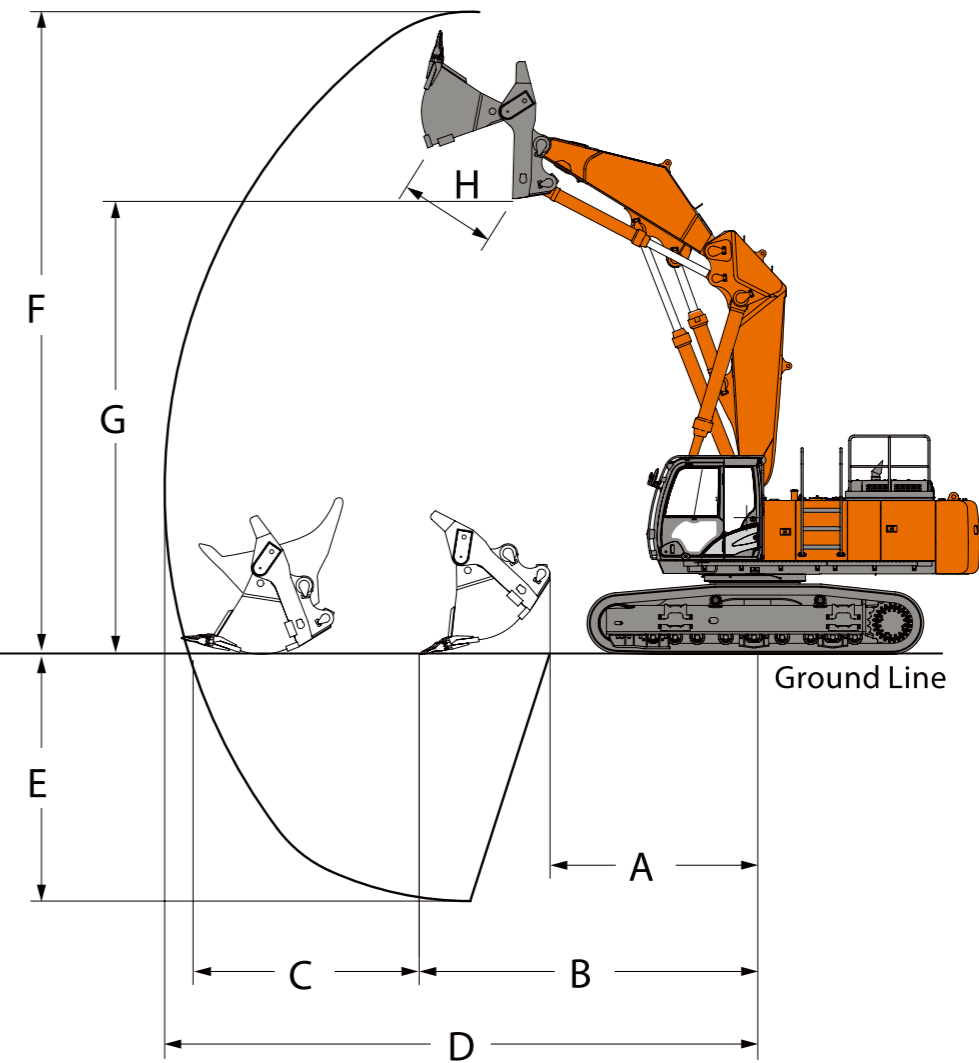


Unit: mm

Arm length	6.3 m BE-boom		
	2.5 m BE-arm	2.9 m BE-arm	7.0 m BE-arm
A Max. digging reach	10 460	10 850	14,620
A' Max. digging reach (on ground)	10 240	10 640	14 440
B Max. digging depth	5 920	6 360	10 030
B' Max. digging depth (8'level)	5 740	6 200	9 930
C Max. cutting height	10 530	10 760	13 780
D Max. dumping height	7 190	7 210	10 900
D' Min. dumping height	3 550	3 030	-
E Min. swing radius	3 930	3 930	4 850
F Max. vertical wall	4 380	4 150	9 980

Excluding track shoe lug

WORKING RANGES LOADING SHOVEL



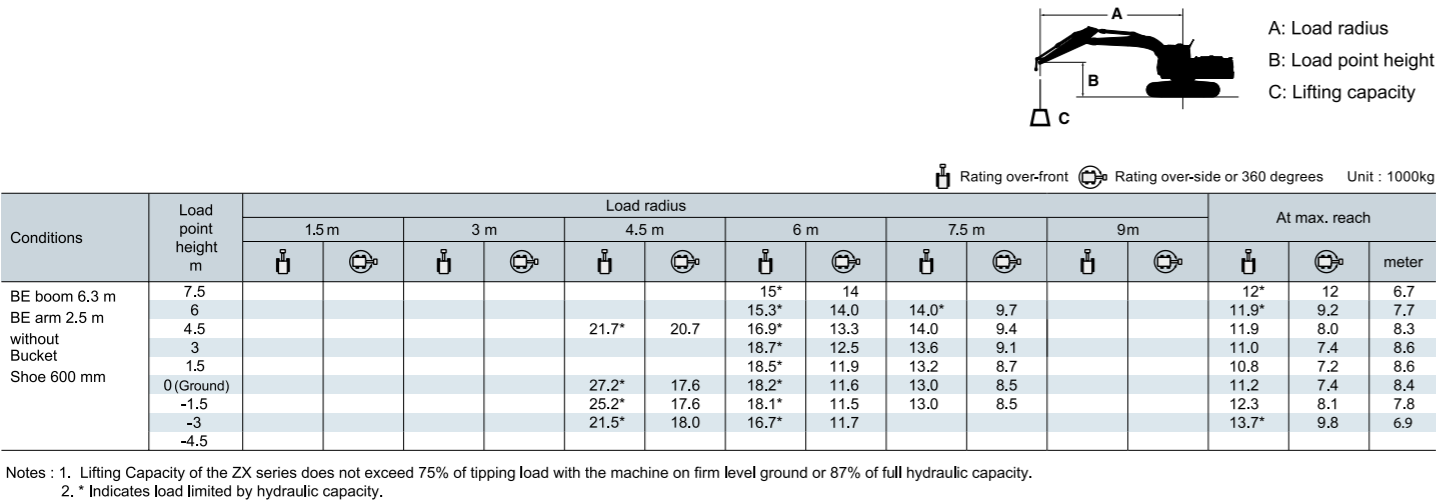
Unit: mm

Item	Bottom dump type
A Min. digging distance	2 750
B Min. Level crowding distance	5 010
C Level crowding distance	3 370
D Max. digging reach	8 760
E Max. digging depth	4 130
F Max. cutting height	10 070
G Min. dumping height	7 500
H Max. bucket opening width	1 390
I Min. Bucket tilting angle.on ground	54 ⁰
J Arm Crowding Force * ISO	296 kN (30,200 kgf)
K Breakout Force * ISO	271 kN (27,600 kgf)

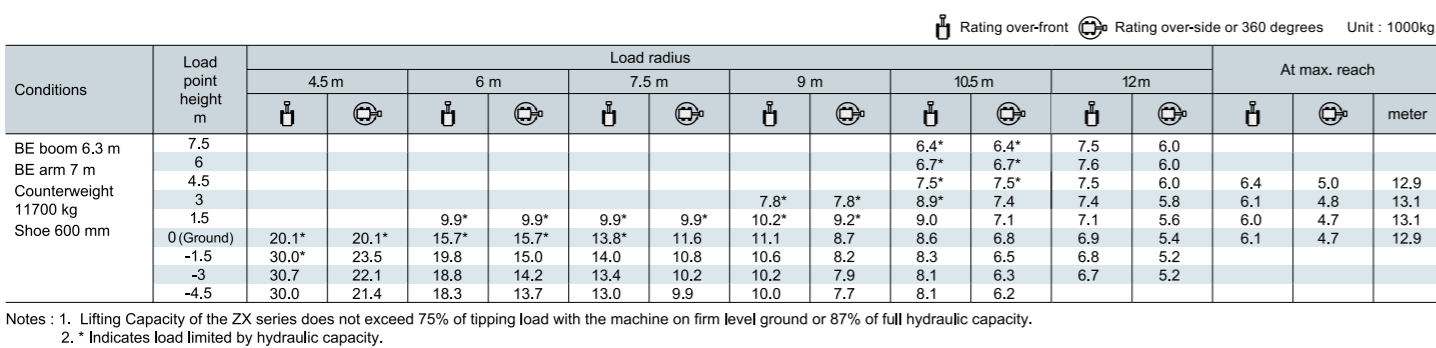
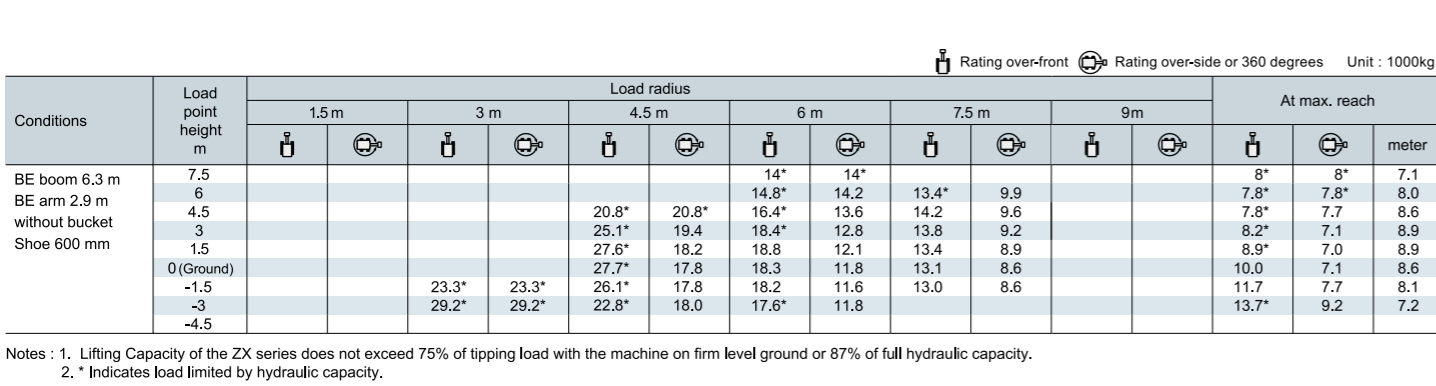
Excluding track shoe lug

SPECIFICATIONS

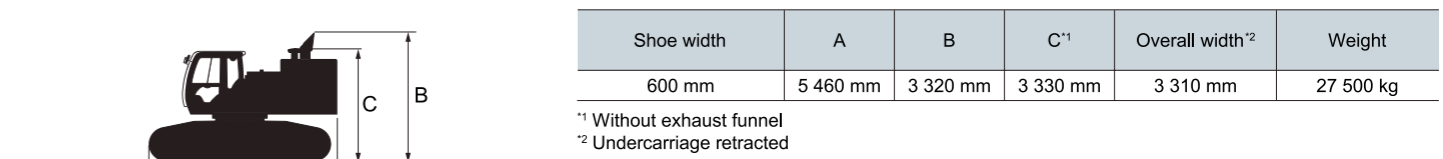
LIFTING LOAD CHART OF ZAXIS490H ULTRA WITH 6.3m BOOM 2.5m ARM WITHOUT BKT



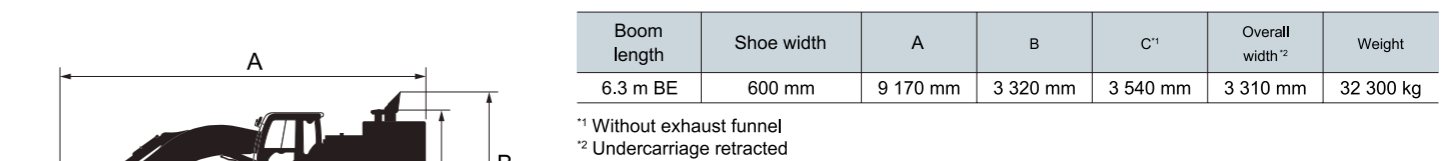
LIFTING LOAD CHART OF ZAXIS490H ULTRA WITH 6.3m BOOM 2.9m ARM WITHOUT BKT



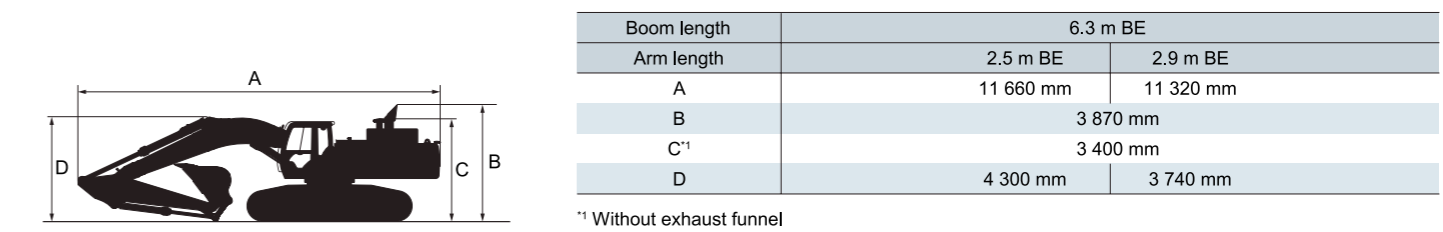
BASIC MACHINE (WITHOUT COUNTERWEIGHT)



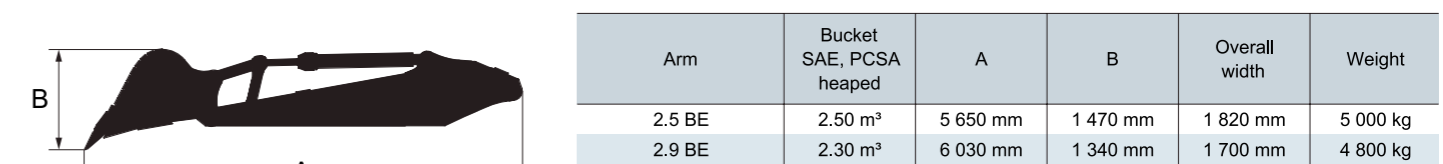
BASIC MACHINE FITTED WITH BOOM AND NO SIDEWALK



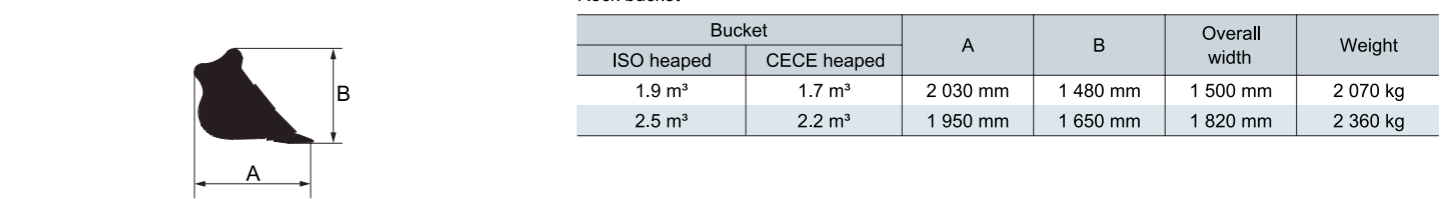
BASIC MACHINE FITTED WITH FRONT AND SIDEWALK



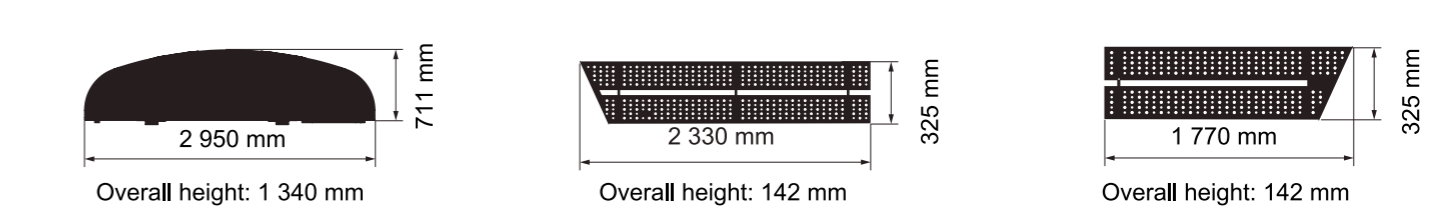
ARM AND BUCKET



BUCKET



COUNTERWEIGHT 9 080 kg



EQUIPMENT

● : Standard equipment ○ : Optional equipment — : Not applicable

ENGINE	
Alternator 50 A	●
Auto idle system	●
Cartridge-type engine oil filter	●
Cartridge-type fuel filter	●
Dry-type air double filter with evacuator valve(with air filter restriction switch for monitor)	●
Expansion tank	●
Fan guard	●
Fuel pre-filter	●
Isolation-mounted engine	●
Power mode control [H/P (High Power) PWR(Power) ECO(Economy)]	●
Pre-cleaner	●
Radiator, oil cooler with dust protective net	●
Water separator	●
HYDRAULIC SYSTEM	
Accessories for breaker	○
Accessories for breaker & crusher	○
Accessories for 2 speed selector	○
Auto power lift	●
Boom mode selector system	●
Control valve with main relief valve	●
Drain filter	●
Engine speed sensing system	●
E-P control system	●
Extra port for control valve	●
Full-flow filter	●
Hose rupture valve	○
Pilot filter	●
Power boost	●
Quick warm-up system for pilot circuit	●
Shockless valve in pilot circuit	●
Suction filter	●
Work mode selector	●

CAB	
Additional fuse box	●
Adjustable armrests	●
All-weather sound suppressed steel cab	●
AM-FM radio	●
Ashtray	●
Auto control air conditioner	●
Auto-idle selector	●
AUX. terminal and storage	○
Mobile charger	●
2 Point seat belt with alarm	●
Windshield washer	●
Cab : H/R cab	●
OPG top guard fitted Level II (ISO10262)	●
Front guard	●
Laminated straight glass front window	●
Left side window can be opened	●
Cigarette lighter 24 V	●
Drink holder	●
Engine shut-off switch	●
Electric double horn	●
Evacuation hammer	●
Fire extinguisher bracket	○
Floor mat	●
Footrest	●
Front window washer	●
Glove compartment	●
Hot & cool box	●
Intermittent windshield wiper	●
Key cylinder light	●
LED room light with door courtesy	●
Pilot control shut-off lever	●
Power outlet 12 V	○
Rain guard for cab	—
Rear tray	●
Retractable seat belt	●
Rubber radio antenna	●
Seat : Adjustable reclining mechanical suspension	●

Seat : Adjustable reclining mechanical suspension with heater	○
Seat : Adjustable reclining air suspension with heater	○
Short wrist control levers	●
Storage box	●
Sun visor (front)	○
Sun visor (side)	○
Transparent roof with slide curtain	●
LIGHTS	
Additional working lights (boom right side)	○
3 working lights	●
2 cab lights	●
4 cab lights	○
MONITOR SYSTEM	
Alarm buzzers: overheat, engine oil pressure	●
Alarms: overheat, engine warning, engine oil pressure, alternator, minimum fuel level, air filter restriction, work mode, etc	●
Display of meters: water temperature, hour, fuel rate, clock	●
Other displays: work mode, auto-idle, glow, operating conditions etc	●
UPPER STRUCTURE	
Battery disconnect switch	●
Batteries 170 Ah	●
Counterweight 9 080 kg	●
Fuel level float	●
Hydraulic oil level gauge	●
Ladder	●
Rear view camera	●
Rear view mirror(right & left side)	●
Side walk (cab side)	●
Swing parking brake	●
Tool box	●
Utility space	●
UNDERCARRIAGE	
Track guard	●

Auto grease system	●
Bolt-on sprocket	●
Hydraulic track adjuster	●
Idler track guard	—
Reinforced track links with pin seals	●
Shoe : 600 mm double grouser	○
Shoe : 600 mm triple grouser	●
Travel motor covers	●
Travel parking brake	●
Track undercover	○
Upper and lower rollers	●
1 track guard (each side)	—
2 track guard (each side)	—
FRONT ATTACHMENTS	
Arm 2.5 m BE	●
Arm 2.9 m BE	○
Boom 6.3 m BE	●
Bucket 1.9 m³ rock (ISO heaped) with dual type side shrouds granite	●
Centralized lubrication system	●
Damage prevention plate and square bars	●
Dirt seal on all bucket pins	●
Flanged pin	●
Monolithically cast bucket link A	●
Reinforced weld link A	○
Reinforced link B	○
MISCELLANEOUS	
Anti-slip steps and handrails	●
Lockable fuel refilling cap	●
Lockable machine covers	●
Onboard information controller	●
Standard tool kit	●
Theft deterrent system	●
Travel direction mark on track frame	●
OTHERS	
Global e-service	●
ConSite	●

The Specifications are subject to change without prior notice. The machine depicted may vary from the actual machine. Please contact our nearest office for latest specifications. Accessories shown here are not part of the standard equipment. Performance of the machine may vary with site and operating conditions encountered.

Tata Hitachi Construction Machinery Company Private Limited

Registered Office : Jubilee Building 45 Museum Road Bangalore 560 025 India

Telephone: +91 80 66953301 02 03 04 05 Fax: +91 80 66953309 25325792

Email: info@tatahitachi.co.in Website: www.tatahitachi.co.in

Toll Free: 1800 121 6633