

NEW

EX130 *PRIME*

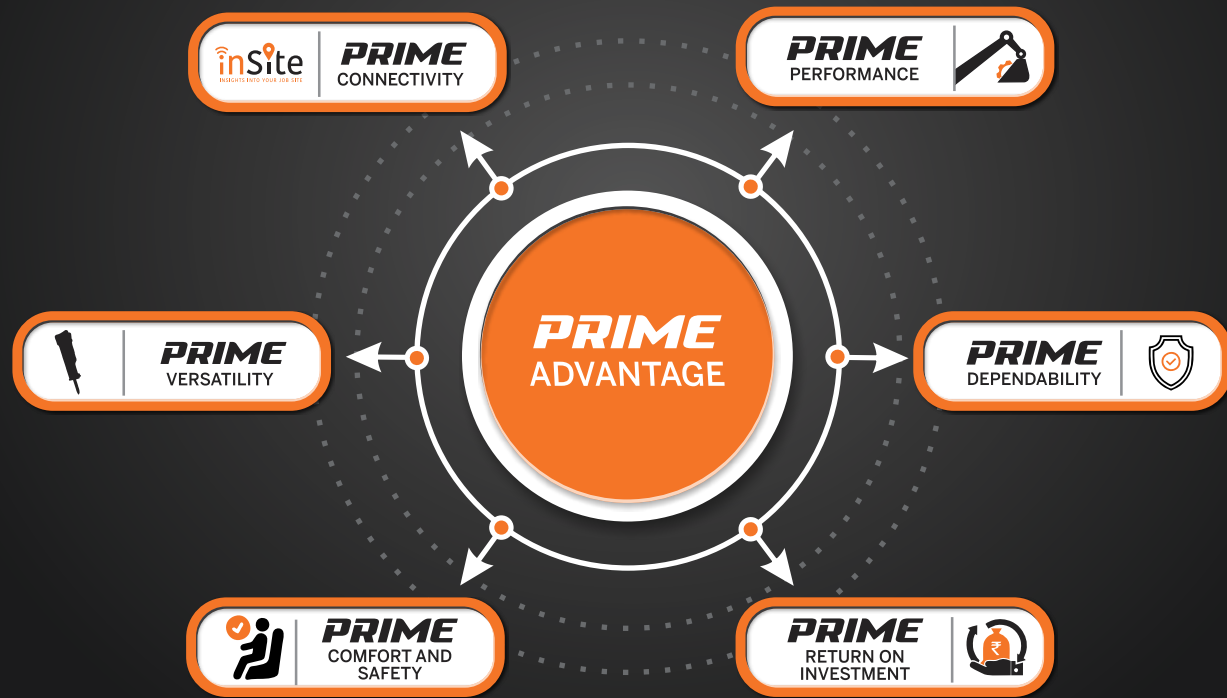
SPEND LESS. EARN MORE.

Experience The Prime Advantage



PRIME

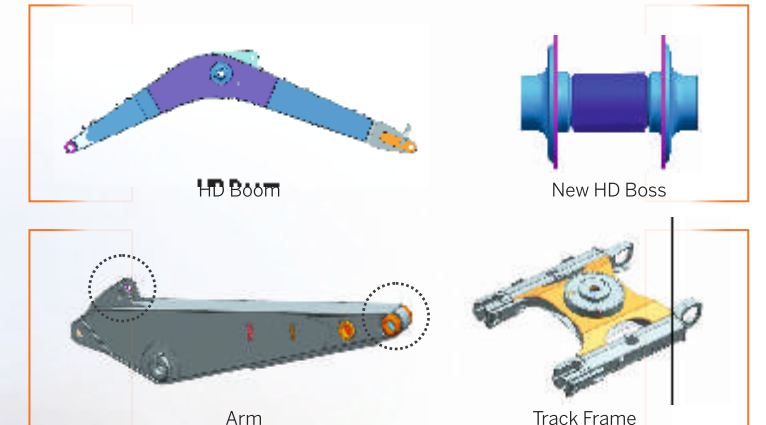
Everything you need in your 13 Ton Excavator is Performance, Dependability, Comfort, Safety, Return On Investment, Connectivity and Versatility. Tata Hitachi's EX130 Prime Hydraulic Excavator sets benchmarks in all these areas. The machine has been designed to provide precision control, high fuel efficiency, high productivity, superior operator comfort, excellent versatility and unmatched return on investment.



PRIME DEPENDABILITY

Higher Durability

- Heavy Duty Boom – 20% Higher Plate Thickness **NEW**
- Heavy Duty Boss – 17% Higher Diameter **NEW**
- Heavy Duty Arm End Boss
- Improved Arm Lug Profile – 25% Higher Lug Radius **NEW**
- Track Frame top & bottom plate – Higher Yield Strength **NEW**



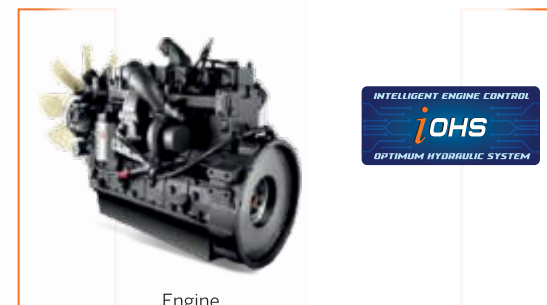
Higher Reliability

- Most Reliable Hydraulic Aggregates
- Components Tested and Validated to International Standards
- Proven Hitachi Technology

PRIME PERFORMANCE

Higher Production

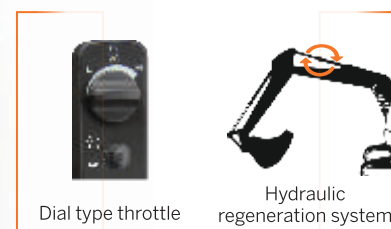
- 0.7 m³ GP bucket - 17% Bigger **NEW**
- 0.65 m³ QR bucket - 8% Bigger **NEW**
- All-new Swing Device with Higher Swing Speed - 17% Faster **NEW**
- Intelligent Optimum Hydraulic System (iOHS) **NEW**
- Upgraded and Improved Engine **NEW**



Engine

Least Fuel Consumption

- Auto Idle and Auto Deceleration (Patented Technology)
- Mode selection- EP and HP mode
- Dial type throttle
- Fuel saving pump system



Dial type throttle

Hydraulic regeneration system



PRIME RETURN ON INVESTMENT



Low Fuel Consumption

- Fuel saving pump system
- Dual work modes



High Resale Value

- Most trusted brand
- Largest dealer network
- Highly reliable & durable machines
- Easy availability of parts & support



Low Maintenance Cost

- Long drain hydraulic oil – 4500hrs
- Fuel Filter- 500 hrs **NEW**
- Maintenance free cyclonic air pre cleaner for longer engine life
- Fuel pre filter for better filtration efficiency **NEW**



Extra Profit over 5 years
₹ 18,00,000*

*Based on testing done in controlled and standard environment. Terms and condition apply

SPEND LESS. EARN MORE.

Experience The Prime Advantage



- Heavy Duty Boom **NEW**
- Rock Breaker Piping Kit (optional)
- HP Return Line Filter (optional)
- Heavy Duty Centre Boss **NEW**



- Heavy Duty Arm **NEW**
- Heavy Duty Arm End Boss **NEW**
- Heavy Duty Centre Boss for Boom **NEW**
- Improved Arm Lug Profile **NEW**
- Arm Regeneration



- 0.7 m³ General Purpose Bucket **NEW**
- 0.65 m³ Quarry Rehandling Bucket **NEW**
- 0.52 Heavy Duty Bucket



- Comfortable and Roomy Cabin
- Weight Adjustable Suspension Seat
- All-new Music System with Bluetooth, USB and FM **NEW**
- LED Lamps **NEW**



- Ergonomic Controls
- 30% smoother pilot levers **NEW**
- Foot Pedal with Rubber Cover **NEW**



- Upgraded and Improved Engine **NEW**
- Reliable and Fuel Efficient
- Split Type Engine Hood **NEW**
- Pre-Fuel Filter **NEW**



- 4G Based telematics **NEW**



- Sleek honeycomb mesh side doors for better airflow
- Hitachi's proven hydraulics for powerful performance



- Heavy Duty Track Frame **NEW**
- Heavy Duty Track Guard
- Box Structure Reinforcement

PRIME COMFORT AND SAFETY

Comfort

- 30% Smoother Pilot Levers **NEW**
- Audio Player with USB + FM for Prime Comfort **NEW**
- Weight-adjustable Suspension Seat with Multiple Seat Adjustments
- Air Conditioner (Optional)
- Mobile Holder **NEW**

Safety

- Seat belt, front guard, anti skid tapes for operator's safety
- Baffle plates to separate hot & cold zones
- Starter motor with thermal cut off to prevent over cranking



PRIME VERSATILITY

Attachments :

- Factory-fitted Rock Breaker Piping Kit with Return Line Filter (optional)
- The Machine is Compatible with a Wide Range of Attachments making it Highly Versatile.



Options* :

- Long arm
- Wide range of buckets for wide variety of applications



PRIME CONNECTIVITY



inSite
INSIGHTS INTO YOUR JOB SITE

TELEMATICS SUITE FOR REAL TIME MONITORING



Ability to track Machine Maintenance Service due date



Fleet Management



Overall Fleet Summary in Graphical Widgets (Dashboard)



NEW
4G Telematics Device



Better Connectivity



Fuel Level



Location, Geo Fencing



Asset Operation



Asset Utilisation



Accessible on Web and App



SUPPORT CHAIN

SUPPORT SOLUTIONS

- Wide spread dealer network for easy availability of spare parts
- Field diagnostic vehicle and mobile workshop for quicker after-sales service
- Peace of mind through extended warranty*
- Extended service intervals for reduced maintenance cost



SPECIFICATIONS

ENGINE

Model.....TATA 697 NA
 Type.....Water cooled, 6-cylinder in-line diesel engine
 Engine power.....76 PS @ 2200 rpm
 Max.torque.....25.4 Kgf-m @ 2000 rpm
 Batteries.....2 X 12V

HYDRAULIC SYSTEM

Main pumps.....2 variable displacement axial piston pumps
 Flow rate.....2 X 115 lpm
 Pilot pump.....1 gear pump
 Flow rate.....23 lpm

SUPERSTRUCTURE

Swing speed.....13.8 rpm

RELIEF VALVE SETTINGS

Implement circuit.....285 kgf/cm²
 Swing circuit.....285 kgf/cm²
 Travel circuit.....355 kgf/cm²
 Pilot circuit.....40 kgf/cm²

UNDERCARRIAGE

Travel speed0 - 4.3 kmph
 Max.traction force.....7500 kgf
 Gradeability.....35⁰ (70% continuous)
 No.of upper rollers (each side).....1
 No. of lower rollers (each side).....6
 No. of track shoes (each side).....41
 Shoe width.....500 mm

SERVICE REFILL CAPACITIES

Hydraulic tank.....72.0 ltr
 Hydraulic system.....126.0 ltr
 Fuel tank.....250.0 ltr
 Engine coolant.....24.0 ltr
 Engine oil.....17.0 ltr
 Swing device.....3.2 ltr
 Travel device (Each side).....3.5 ltr

WEIGHTS AND GROUND PRESSURE

Machine	Operating weight	Ground pressure
Backhoe	12,172 - 12,518 kg	0.43 kgf / cm ²

DIGGING FORCE

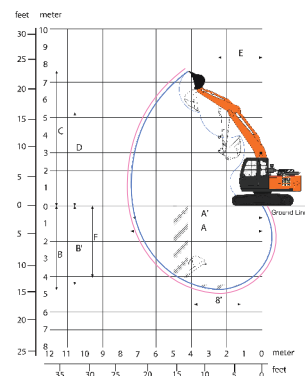
BACKHOE
 Bucket digging force7300 kgf
 Arm crowd force.....5400 kgf

BUCKETS

BACKHOE

Bucket type	Capacity (PCSA)	Width without side cutter	Weight	Tooth points
GP	0.7 m ³	1050	510	5
QR	0.65 m ³	1117	506	5
HD	0.52 m ³	923	493	4

WORKING RANGES

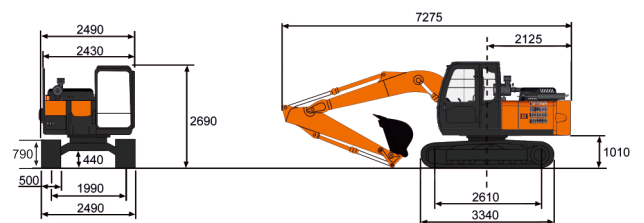


BACKHOE

	Boom length	4250	
	Arm length	1950	2250
A	Max. digging reach	7410	7699
A'	Max. digging reach (on ground)	7250	7552
B	Max. digging depth	4720	4964
B'	Max. digging depth (8° level)	4460	4755
C	Max. cutting height	7630	7780
D	Max. dumping height	5280	5500
E	Min. swing radius	2460	2460
F	Max. vertical wall	4040	4160

All dimensions are in mm

DIMENSIONS



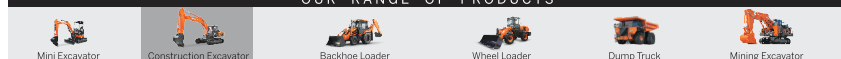
All dimensions are in mm

Tata Hitachi Construction Machinery Company Private Limited

Registered Office: Jubilee Building, 45 Museum Road, Bangalore, India 560025
 Telephone: +9180 66953301 / 02 / 03 / 04 / 05 | Email: info@tatahitachi.co.in



OUR RANGE OF PRODUCTS



Authorised Dealer

These specifications are subject to change without prior notice. The machine depicted may vary from the actual machine. Please contact our nearest office for latest specifications. Accessories shown here are not part of the standard equipment. Performance of the machine may vary with site and operating conditions encountered.