



**TATA HITACHI**

Reliable solutions

# SHINRAI **POWER 4**

• RELIABLE • TRUSTWORTHY • CAPABLE

**4x4**



Model: SHINRAI POWER 4 | Operating Weight: 8200 - 8400 Kg | Engine: 73.2 HP  
Bucket Capacity: Backhoe: 0.30 m<sup>3</sup>, Loader: 6-in-1 bucket





## RELIABLE DRIVE LINE FOR RELIABLE PERFORMANCE

- Powerful engine
- Superior engine performance
- Globally proven and reliable transmission & axles
- In-line fuel injection pump (FIP) for cost-effective maintenance
- 4 Wheel Drive



AXLE & TRANSMISSION



## RELIABLE STRUCTURES FOR LONG LIFE AND SUPERIOR PERFORMANCE IN TOUGH CONDITIONS

- Strong and tested structures for tough operations
- Higher reaches of loader and backhoe attachments for faster and effortless performance
- Manufactured with high grade steel through robotic welding



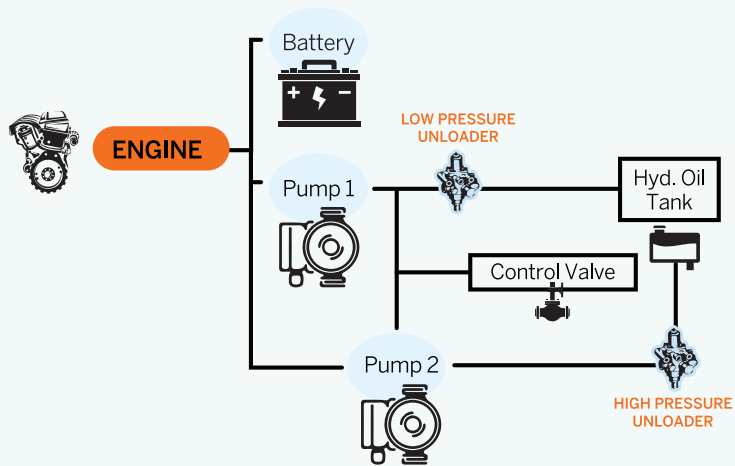
ROBUST STRUCTURES





## EXCELLENT HYDRAULIC SYSTEM FOR MORE POWER WITH HIGH FUEL EFFICIENCY

- Provides better performance with increased fuel efficiency
- High/Low pressure unloader systems ensure optimum hydraulic oil pressure as per need
- Ensures optimal utilisation of engine and hydraulic power



HYDRAULIC PUMP



CONTROL VALVE





## A CABIN THAT OFFERS MAXIMUM COMFORT AND SAFETY



- Well ventilated and spacious cabin
- Excellent visibility
- Comfortable operator seat
- Large leg space for comfortable operation
- Ergonomic controls
- User-friendly consoles
- Multi-functional digital display
- Ample storage space
- Air-conditioner\*
- Meets FOPS\* safety requirements
- Quieter engine
- Powerful music system with FM, USB, AUX, Bluetooth connectivity and calling facility.
- Fuel theft alarm
- Machine theft alarm
- LED work lights





## TELEMATICS SUITE FOR REAL TIME MONITORING



- GPS and GPRS based remote tracking through InSite
- Monitors machine location and operations
- Offers information about the machine and the fleet



Location,  
Geo Fencing



- Fuel Level Indication
- Fuel Consumption Report



Fleet Management



Overall Fleet Summary  
in Graphical Widgets  
(Dashboard)



Asset  
Utilisation



Asset Operation



Ability to track Machine  
Maintenance/Service  
due date



Accessible on  
Web and App

## ULTIMATE SUPPORT FOR THE ULTIMATE MACHINE

- Warranty, extended warranty and post-warranty services.
- On-site services through a wide network of dealerships
- Fault codes display in the cluster for ease of maintenance and troubleshooting
- Field diagnostic vehicle for immediate on-site resolution
- On-site and plant-based training programmes
- Hydraulic oil change interval of 4500 hours



**SUPPORT CHAIN**



GROUND-LEVEL INSPECTION





## A RANGE OF ATTACHMENTS






**Specifications**

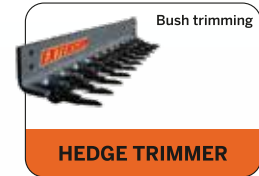
- Operating Weight- 375 kg
- Operating Pressure- 100-140 bar
- Impact Blow Rate- 350 to 800 bpm


**Specifications**

- Torque Range- 2717 NM to 8152 NM
- Oil Pressure Range- 80 to 240 bar
- Diameter- 150 mm-1200 mm


**Specifications**

- Lifting Capacity- 1500 kg
- Fork Length- 1220 mm


**Specifications**

- Max. Cutting Diameter- 40 mm
- Max. Cutting Length- 1500 mm
- Back Pressure- 20 bar


**Specifications**

- Operating Weight- 87 kg
- Front & Rear Pin Diameter- 50 & 55 mm


**Specifications**

- Drum Speed- 2400 RPM
- Cutting Drum Width- 1000 mm
- Oil Pressure- 160 bar-180 bar


**Specifications**

- Digging Force- 5685 kgf


**Specifications**

- Lifting Capacity- 1000 kg
- Distance from Front Tyre- 3897 mm
- Lift Height from Ground- 5318 mm


**Specifications**

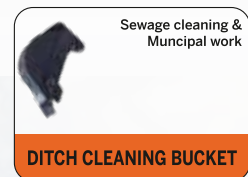
- Width- 366 mm
- Length- 2357 mm
- Height- 874 mm


**Specifications**

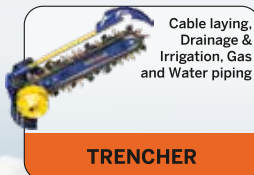
- Bucket Capacity- 1.0 m<sup>3</sup>
- Bucket Width- 2350 mm
- Number of Tooth Points- 8


**Specifications**

- Bucket Capacity- .09 m<sup>3</sup>
- Bucket Width- 1 ft
- Number of Tooth Points- 3


**Specifications**

- Bucket Capacity- .35 m<sup>3</sup>
- Bucket Width- 945 mm


**Specifications**

- Width- 1018 mm
- Length- 2262 mm
- Cutting Width Range- 150 mm-300 mm



# TECHNICAL SPECIFICATIONS

## ENGINE

Make .....	Kubota
Model .....	V3800-TIE4B
Type .....	Turbo-charged, inter-cooled direct injection
Gross Power .....	73.2 HP (54.6kW) @2200 RPM
Max. Torque .....	305 Nm @ 1500 RPM
Battery (with cut-off switch) .....	12 V, 130 Ah
No. of Cylinders .....	4 nos
Bore .....	100 mm
Stroke .....	120 mm
Displacement .....	3,769 cc
Alternator .....	100Amps

## HYDRAULIC SYSTEM

Excellent Hydraulic System (EHS) with Tandem gear pump for lower fuel consumption  
 System Pressure ..... 245 bar  
 Max. Pump Flow ..... 113 lpm @ 1,950 RPM  
**Control Valve:** Sectional valves that are individually replaceable.

## TRANSMISSION

- Equipped with Carraro-make synchro-shuttle transmission.
- Solenoid-type mechanism allows smooth, easy forward and reverse movements.
- Transmission allows for four forward and two reverse speed.

## AXLE

### Front Axle

- Heavy-duty, powered axle
- Floats up to +/8 degrees to handle uneven terrains
- 4 WD Front Axle, King Pin Angle=7°, Camber Angle=1.5, Ratio Total-13.85:1

### Rear Axle

- Rear heavy-duty Carraro axle
- High brake torque

## SPEEDS

Speeds @ 1950 rpm with standard tyres

### Forward

1st.....	5 kmph
2nd.....	8 kmph
3rd.....	17 kmph
4th.....	32 kmph

### Reverse

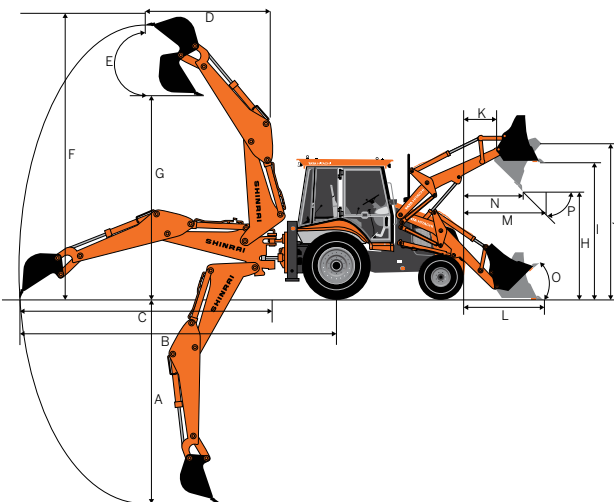
1st.....	6 kmph
2nd.....	9 kmph
3rd.....	Not recommended
4th.....	Not recommended

## BACKHOE PERFORMANCE

Backhoe Bucket digging force .....	5,534 Kgf	Backhoe Arm Length.....	1.96 m
Backhoe Arm digging force.....	3,136 Kgf	Backhoe Boom Length.....	2.76 m
Slider Frame Travel.....	1,050 mm	Bucket width .....	798 mm

Dim. Notations	Dimension	Description
A	5,003	Max. digging depth
B	7,196	Max. reach from rear axle centre
C	5,798	Max. reach from slew centre
D	2,520	Max. reach during loading from slew centre
E	180°	Bucket rotation angle
F	6,526	Max. cutting height in backhoe (Stabilizer fully extended position)
G	4,476	Max. loading height in backhoe (Stabilizer fully extended position)

All dimensions are in mm



## BRAKES

Service Brake: Oil-immersed wet disc, hydraulic-actuated with independent pedals for better control in narrow spaces  
 Parking Brake: Hand-operated disc brake on the rear axle

## STEERING

Type .....	Hydraulic actuation with priority for smooth control
Turning Radius.....	Inner wheel braking
Outside Loader Bucket.....	11.73 m
Outside Wheels .....	8.6 m

## TYRES

Front (Std.).....	9x16, 16 PR
Front Wider.....	12.5/80-18, 12 & 14 PR
Rear (Std.) .....	16.9 x 28, 12 PR
Rear (HD) .....	14 x 25, 20 PR

## REFILL CAPACITY

Fuel Tank .....	128 L
Engine Oil.....	13.2 L
Engine Coolant.....	13 L
Transmission Oil.....	16 L
Rear Axle Oil.....	17.1 L
Hydraulic Oil Refill .....	86 L
Front Axle-Live .....	8.9 L[4WD]

## LOADER PERFORMANCE

Below ground dig depth .....	55 mm
Loader bucket break-out force.....	6,499 Kgf
Loader arm break-out force .....	5,135 Kgf
Payload.....	1,920 kg
Loader Bucket capacity.....	1.1cum (Tilt Dump)
Bottom Dump Bucket capacity .....	1.0cum(Bottom dump)

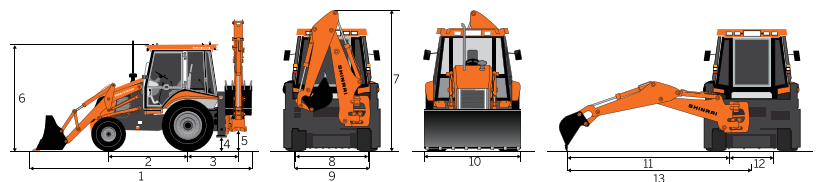
Dim. Notations	Dimension	Description
H	2,842	Dump height
I	3,509	Load over height
J	3,729	Pin height
K	454	Pin forward reach
L	1,817	Reach at ground level
M	1,432	Max. reach at full height
N	982	Reach in bucket dump position
<b>Bucket Angles</b>		
O	45°	Bucket roll-in angle
P	45°	Bucket rotation angle

All dimensions are in mm

## MAIN MACHINE STATIC DIMENSIONS

Symbol	Measured value	Description
1	6,300	Transport length
2	2,110	Wheel base
3	1,370	Slew centre to rear axle centre
4	295	Minimum ground clearance point
5	485	Slew ground clearance
6	2,960	Height of cabin
7	3,820	Machine transportation height
8	1,710	Front wheel tread width
9	1,900	Rear wheel tread width
10	2,354	Loader bucket width
11	5,798	Max. side reach to slew centre
12	1,035	Total side-shift travel
13	6,323	Max. side reach to machine centre

All dimensions are in mm



## Tata Hitachi Construction Machinery Company Private Limited

Registered Office: Jubilee Building, 45 Museum Road Bangalore, India 560025  
 Telephone: +91 80 66953301 / 02/ 03/ 04/ 05 | Email: info@tatahitachi.co.in

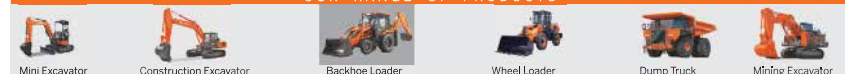


www.tatahitachi.co.in

Toll Free Number  
1800 121 6633



### OUR RANGE OF PRODUCTS



Authorised Dealership

These specifications are subject to change without prior notice. The machine depicted may vary from the actual machine. Please contact our nearest office for latest specifications. Accessories shown here are not part of the standard equipment. Performance of the machine may vary with site and operating conditions encountered.