

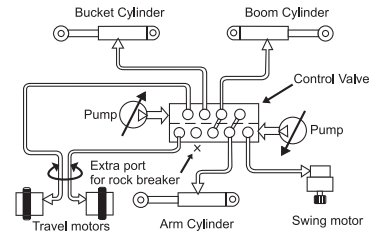
## Superior Hydraulics ▶

Powered by Hitachi's original Optimum Hydraulic System

Benefit: fast and smooth combined operations for higher performance.

Featuring:

- Cross sensing summation system
- Fuel saving pump system
- Original pilot circuit
- Boom and Arm regeneration, holding valves
- Spare spool for attachments
- Absolute type hydraulic filter



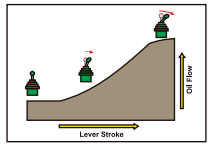
Boom & Arm Regeneration resulting in energy saving



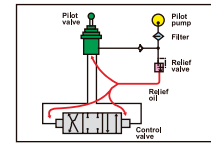
Reliable hydraulic aggregates



Absolute type hydraulic filter for complete hydraulic system protection against contamination



Oil flows in proportion to lever stroke. Load is minimum at neutral position saving fuel



Higher pressure pilot circuit is actuated by a lower pressure pilot circuit reducing jerks on operator

## Unparalleled Versatility ▶

- EX200LC comes in various tailor made options and is easily customizable for use with multiple other attachments and accessories.
- EX200LC has options of factory fitted rock breaker piping kits with return line filter.



### Rock Breakers: New Alicon Super+ Series

1. B215 Super+ (Secondary Breaking)
2. B235 Super+ (Primary Breaking)

#### Improved Durability

- Longer Piston & Damper
- Larger Through Bolt
- Modified Front Cover

#### Higher Performance

- Enhanced Productivity
- Larger Head Cap
- Larger Chisel & Front Head

### Rock Breaker: GH Series

1. GH-9 (Secondary Breaking)
2. GH-10 (Primary Breaking)

#### Features

- Excellent power-to-weight ratio.
- High-impact energy providing greater productivity.
- Unique gas charged piston to give high impact energy with less recoil.
- Quick-change chisel replacement makes it easy to use & reduces down-time.
- Replaceable cylinder sleeve for easy and economical rebuild.
- Simple two-moving-parts designed for greater reliability.



### APPLICATIONS



**MINING & QUARRYING**

- Primary Breaking
- Secondary Breaking



**DEMOLITION & RENOVATION**

- Masonry Structures
- Concrete Structures
- Composite Steel
- Pavements - Asphalt, Concrete



**METALLURGICAL INDUSTRY**

- Slag Recycling
- Cleaning & Debricking



**CONSTRUCTION INDUSTRY**

- Earthwork
- Trenching
- Ground excavation
- Tunneling
- Foundation work
- Building construction

### Quick Coupler

#### Twin Lock Power Latch Quick Coupler Features

- Quick Couplers facilitate rapid change of bucket and attachments increasing the equipment utilization and productivity.
- Fully Automatic hydraulic coupler with unique Automatic Blocking System (ABS) eliminates the need for a manually inserted safety pin.
- Twin-locking feature enables front and rear attachment pins mechanically locked, in the event of any hydraulic power loss.
- Strong, durable, high-tensile precision single piece cast steel frame.

- ▶ Attachments can only be removed in a safe, fully crowd-in position.

- ▶ Short Payback period of less than six months.



### Other Range of Attachments Multiple Attachments, Unlimited Possibilities



Clamshell



Orange Peel Grab



Rotating Crusher



Magnet



Shear



## Power Optimization ▶

- Powered by reliable and fuel efficient Cummins 6BT5.9C engine.
- Auto Idle and Auto Deceleration (Original Tata Hitachi technology)
- Stepper motor based precise engine speed control; Dial type throttle
- Mode selection feature [EP mode, HP mode] Default EP mode – engine starts in EP mode only, reducing fuel consumption and protecting the engine.

- Engine efficiency improvement for lower fuel consumption



Fuel efficient engine



Dial type throttle

## Efficiency Boosters ▶

- Most comfortable heavy duty suspension seat in its class with dual tone fabric
- Ergonomic roomy cabin with single radius A Pillar and handrail
- New and improved audio player (USB+ FM)
- Heat reflective coating on cabin top
- Engine hot air draft redirection
- New premium upholstered interiors
- New hinged sleek honeycomb mesh ROC door with lock
- New honeycomb mesh pump side door
- Cyclonic type pre-cleaner
- Aluminum ROC for better cooling
- Reduced engine hood height for superior visibility
- Upgraded monitor, ergonomic hand grips and controls
- Hydra-mounts for cab mounting
- Battery relay protection cover
- InSite enabled (Insights into your job site)
- 2 extra cab lights & Front guard as standard



Improved serviceability



Spacious and comfortable working space with well laid out controls



Hinged ROC door



Easy to service



Cabin top heat reflective coating



Premium interior upholstery



Cyclonic type pre-cleaner



New premium audio player (USB + FM)





#### ✦ Insite helps you with

- Location, Geo Fencing
- Overall Fleet Summary in Graphical Widgets (Dashboard)
- Fuel Levels
- Asset Utilization
- Fleet Management
- Asset Operation
- Ability to Track the Machine Maintenance/Service Due Date

BE IN SYNC WITH YOUR MACHINES

#### ✦ Return on Investment

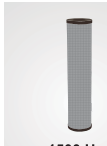
- Highest resale value
- Lower operating cost
- Best in class fuel efficiency
- Wide spread dealer network for easy availability of spare parts
- Field diagnostic vehicle for quicker after sales support
- Peace of mind through extended warranty
- Extended service intervals for reduced maintenance cost:
  - Hydraulic oil change: 4500 hours
  - Hydraulic filter change: 1500 hours



4500 Hrs  
Hydraulic oil  
change interval



Default EP Mode  
resulting in  
fuel saving



1500 Hrs  
Hydraulic filter  
change interval



Upto 3 years or  
7500 hours  
whichever is earlier\*

\*Conditions apply

#### SPECIFICATIONS

##### ENGINE

Model.....Cummins 6BT5.9C  
Type.....6 cylinder in-line water cooled  
Rated fly wheel power.....133 PS @ 2000 rpm  
Max.torque.....54.8 kgf-m @ 1300 rpm  
Batteries.....2 X 12 V

##### HYDRAULIC SYSTEM

Main pumps.....2 variable displacements axial piston pumps  
Max. oil flow.....2 X 221 lpm  
Pilot pump.....1 gear pump  
Max. oil flow.....20 lpm

##### SUPERSTRUCTURE

Swing speed.....13.7 rpm

##### RELIEF VALVE SETTINGS

Implement circuit.....285 kgf/cm<sup>2</sup>  
Swing circuit.....260 kgf/cm<sup>2</sup>  
Travel circuit.....350 kgf/cm<sup>2</sup>  
Pilot circuit.....40 kgf/cm<sup>2</sup>

##### UNDERCARRIAGE

Travel speeds.....0-4.2 kmph  
Max.traction force EX200LC Super+.....15,300 kgf  
Gradeability.....35° (70% continuous)  
No.of upper rollers.....2  
No. of lower rollers.....8  
No. of track shoes.....52  
Shoe width EX200LC Super+.....500 mm

##### SERVICE REFILL CAPACITIES

Hydraulic tank.....129.0 ltr  
Hydraulic system.....220.0 ltr  
Fuel tank.....310.0 ltr  
Engine coolant.....35.0 ltr  
Engine oil (Sump).....14.0 ltr  
Swing device.....6.7 ltr  
Travel device (Each side).....6.8 ltr

##### WEIGHTS AND GROUND PRESSURE

Machine	Operating weight	Ground pressure
EX200LC Backhoe	20,100 kg	0.52 kgf /cm <sup>2</sup>

##### DIGGING FORCES

###### BACKHOE

Bucket digging forces.....11000 kgf

	Arm length	1.90 m	2.22 m	2.90 m
Arm digging force		12500 kgf	11300 kgf	8800 kgf

These specifications are subject to change without prior notice. The machine depicted may vary from the actual machine. Please contact our nearest office for latest specifications. Accessories shown here are not part of the standard equipment. Performance of the machine may vary with site and operating conditions encountered.



#### Tata Hitachi Construction Machinery Company Private Limited

Registered Office: Jubilee Building, 45 Museum Road, Bangalore, India 560025

Telephone: +91 80 6695 3301 / 02 / 03 / 04 / 05 | Toll Free : 1800 121 6633

Email: info@tatahitachi.co.in | Website: www.tatahitachi.co.in |

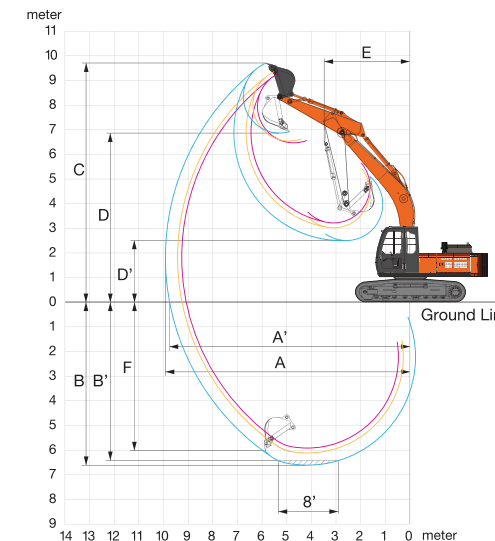
These specifications are subject to change without prior notice. The machine depicted may vary from the actual machine. Please contact our nearest office for latest specifications. Accessories shown here are not part of the standard equipment. Performance of the machine may vary with site and operating conditions encountered.

##### BUCKETS

###### BACKHOE

Capacity	Width without side cutter	Weight (approx.)	Tooth points
0.86 m <sup>3</sup>	997 mm	940 kg	4
0.91 m <sup>3</sup>	1150 mm	760 kg	5
1.0 m <sup>3</sup>	1256 mm	805 kg	5
1.20 m <sup>3</sup>	1450 mm	690 kg	-
1.5 m <sup>3</sup>	1780 mm	567 kg	-

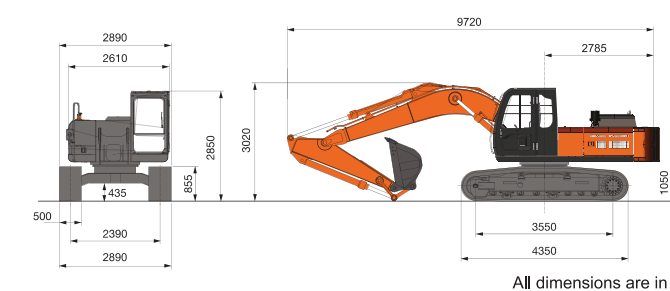
##### BACKHOE ATTACHMENT



##### WORKING RANGES

BACKHOE		5680		
	Boom length			
	Arm length	1900	2220	2900
A	Max. digging reach	9110	9250	9910
A'	Max. digging reach (on ground)	8920	9060	9740
B	Max. digging depth	5580	5910	6600
B'	Max. digging depth (8' level)	5340	5670	6420
C	Max. cutting height	9340	8990	9400
D	Max. dumping height	6480	6230	6610
E	Min. swing radius	4010	3720	3660
F	Max.vertical wall depth	4950	5050	5980

##### DIMENSIONS



All dimensions are in mm

Authorised Dealership



TATA HITACHI

Reliable solutions

# EXPERIENCE THE POWER OF

EX200LC  
Super  
SERIES



Model : EX200LC  
Engine Power : 133 PS @ 2000 rpm  
Operating Weight : 20,100 kg  
Bucket Capacity : 0.86 - 1.5 m<sup>3</sup>