

EXPERIENCE THE POWER OF

NEW
EX200
Super 
SERIES
INFRA



Model: EX200

Engine Power: 133 PS @ 2000 rpm

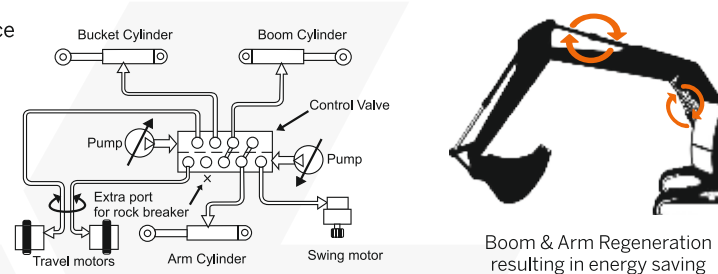
Operating Weight: 19,800-20,000 kg

Bucket Capacity: 0.86 - 0.91 m³

Superior Hydraulics

Powered by Hitachi's original Optimum Hydraulic System
Benefit: fast and smooth combined operations for higher performance

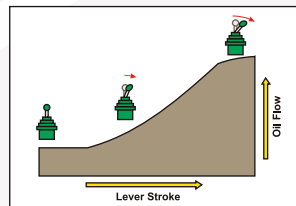
- Cross sensing summation system
- Fuel saving pump system
- Original pilot circuit
- Boom and Arm regeneration, holding valves
- Absolute type hydraulic filter
- New absolute type hydraulic filter
- New improved pilot filter for protection of hydraulic system



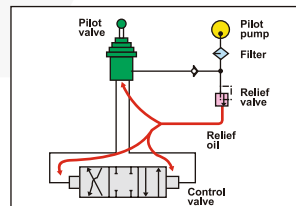
Reliable hydraulic aggregates



Absolute type return filter for improved hydraulic system against contamination



Oil flows in proportion to lever stroke. Load is minimum at neutral position saving fuel



Higher pressure circuit is actuated by a lower pressure pilot circuit reducing jerks on operator

Unparalleled Versatility

NEW

EX200 Infra has an option of factory fitted rock breaker pipping kit

APPLICATIONS



MINING & QUARRYING
• Primary Breaking
• Secondary Breaking



DEMOLITION & RENOVATION
• Masonry Structures
• Concrete Structures
• Composite Steel
• Pavements - Asphalt, Concrete



METALLURGICAL INDUSTRY
• Slag Recycling
• Cleaning & Debricking



CONSTRUCTION INDUSTRY
• Earthwork
• Trenching
• Ground excavation
• Tunneling
• Foundation work
• Building construction



Power Optimization

- Powered by reliable & fuel efficient cummins 6BT5.9C engine
- Engine efficiency enhancement for lower fuel consumption
- Default EP mode – engine starts at EP mode for reduced fuel consumption & protecting engine
- Mode selection feature – EP mode & HP Mode
- Auto Idle & Auto Deceleration feature for lower fuel consumption
- Dial type throttle for precise engine speed control (Stepper Motor based regulation)



Fuel efficient engine



Dial type throttle

Efficiency Boosters

- New improved smoother pilot levers for improved operator comfort
- New improved heat insulation system for improved operator comfort inside the cabin
- New improved audio player (USB + FM + Aux)
- New improved InSite (Get insights into your job site)
- New improved cyclonic type air pre-cleaner for protecting the engine
- New heavy duty comfortable suspension seat with its dual tone fabric
- Ergonomic roomy cabin with optional AC
- Aluminium ROC for better cooling
- New improved reliable structures for uniform load distribution

* Against earlier model

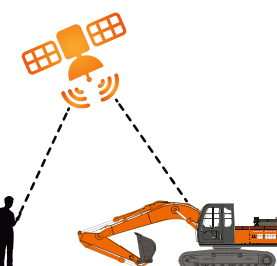


Improved serviceability



Spacious and comfortable working space with well laid out controls

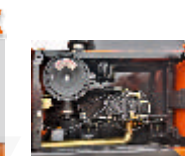
inSite
INSIGHTS INTO YOUR JOB SITE



New premium audio player (USB + FM)



Cyclonic type pre-cleaner



Easy to service



Control lever

Return on Investment

- Most durable & reliable structures
- Highest resale value
- Best in class fuel efficiency
- Lower operating cost
- Wide spread dealer network for easy availability of spare parts
- Filed diagnostic vehicle for quicker after sales support
- Peace of mind through extended warranty
- Extended service intervals for reduced maintenance cost:
 - Hydraulic oil change – 4500Hrs
 - Hydraulic filter change – 1500Hrs



4500 Hrs
Hydraulic oil change interval



Default EP Mode
resulting in fuel saving



1500 Hrs
Hydraulic filter change interval

EXTENDED WARRANTY
COMPLETE PEACE OF MIND

For complete peace of mind

SPECIFICATIONS

ENGINE

Model..... Cummins 6BT5.9C
 Type.....6 cylinder in-line water cooled
 Rated fly wheel power.....133 PS @ 2000 rpm
 Max.torque.....54.8 kgf-m @ 1300 rpm
 Batteries.....2 X 12 V

HYDRAULIC SYSTEM

Main pumps.....2 variable displacements axial piston pumps
 Max. oil flow.....2 X 221 lpm
 Pilot pump.....1 gear pump
 Max. oil flow.....20 lpm

SUPERSTRUCTURE

Swing speed.....13.7 rpm

RELIEF VALVE SETTINGS

Implement circuit.....285 kgf/cm²
 Swing circuit.....260 kgf/cm²
 Travel circuit.....350 kgf/cm²
 Pilot circuit.....40 kgf/cm²

UNDERCARRIAGE

Travel speeds.....0-4.2 kmph
 Max.traction force EX200 Super+15,000 kgf
 Gradeability.....35° (70% continuous)
 No.of upper rollers.....2
 No. of lower rollers.....7
 No. of track shoes.....49
 Shoe width EX200 Super+500 mm

SERVICE REFILL CAPACITIES

Hydraulic tank.....129.0 ltr
 Hydraulic system.....220.0 ltr
 Fuel tank.....310.0 ltr
 Engine coolant.....35.0 ltr
 Engine oil (Sump).....14.0 ltr
 Swing device.....6.7 ltr
 Travel device (Each side).....6.8 ltr

WEIGHTS AND GROUND PRESSURE

Machine	Operating weight	Ground pressure
EX200 Backhoe	19,800 - 20,000 kg	0.55 kgf / cm ²

DIGGING FORCES

BACKHOE

Bucket digging forces.....11000 kgf

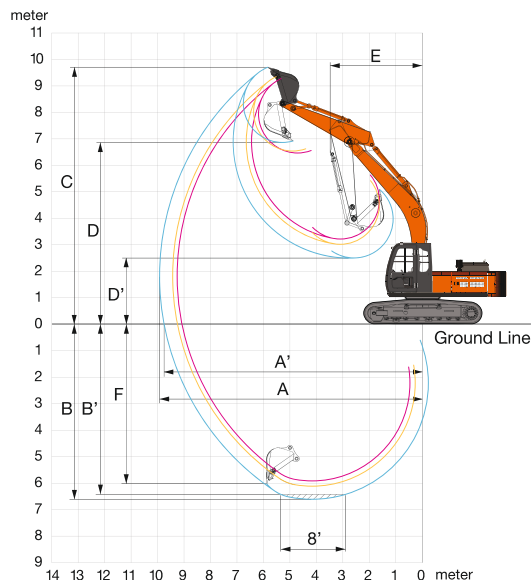
Arm length	2.22 m
Arm digging force	11300 kgf

BUCKETS

BACKHOE

Capacity	Width without side cutter	Weight (approx.)	Tooth points
0.86 m ³	997 mm	940 kg	4
0.91 m ³	1150 mm	980 kg	5

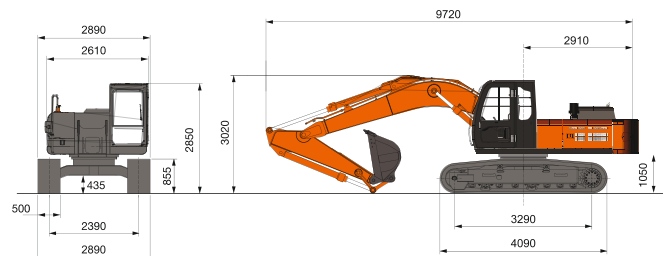
BACKHOE ATTACHMENT



WORKING RANGES

BACKHOE		
	Boom length	5680
	Arm length	2220
A	Max. digging reach	9260
A'	Max. digging reach (on ground)	9080
B	Max. digging depth	5920
B'	Max. digging depth (8' level)	5290
C	Max. cutting height	9015
D	Max. dumping height	6235
E	Min. swing radius	3750
F	Max. vertical wall depth	5440

DIMENSIONS



All dimensions are in mm

Tata Hitachi Construction Machinery Company Private Limited

Registered Office: Jubilee Building, 45 Museum Road, Bangalore, India 560025
 Telephone: +9180 66953301 / 02 / 03 / 04 / 05 | Email: info@tatahitachi.co.in

www.tatahitachi.co.in

Toll Free Number
1800 121 6633

f t i n

EXTENDED WARRANTY
3 YEARS / 30,000 HOURS

SUPPORT ONLINE

CERTIFIED USED EQUIPMENT
DATA TRACKING PREMIUM USED VALUE



OUR RANGE OF PRODUCTS



Authorised Dealer

These specifications are subject to change without prior notice. The machine depicted may vary from the actual machine. Please contact our nearest office for latest specifications. Accessories shown here are not part of the standard equipment. Performance of the machine may vary with site and operating conditions encountered.

TCHM/EX200SUPER/EA/MAY/2022