

SPECIFICATIONS

ENGINE

Model.....TATA 497 NA
 Type.....Water cooled, 4 cylinder in-line diesel engine
 Rated fly wheel power.....55 PS @ 2000 rpm
 Max.torque.....19 Kg-fm @ 1400 rpm
 Batteries.....2x12 V

HYDRAULIC SYSTEM

Main pumps.....2 variable displacements axial piston pumps
 Flow rate.....2 X 60 lpm
 Pilot pump.....1 gear pump
 Flow rate.....19.5 lpm

SUPERSTRUCTURE

Swing speed.....12.8 rpm

RELIEF VALVE SETTINGS

Implement circuit.....265 kgf/cm²
 Swing circuit.....235 kgf/cm²
 Travel circuit.....280 kgf/cm²
 Pilot circuit.....35 kgf/cm²

UNDERCARRIAGE

Travel SpeedLow 2.5 - High 5.0 kmph
 No.of upper rollers.....1x2
 No. of lower rollers.....5x2
 No. of track shoes.....37x2
 Shoe width.....450 mm

SERVICE REFILL CAPACITIES

Hydraulic tank.....42.0 ltr
 Hydraulic system.....92.0 ltr
 Fuel tank.....135.0 ltr
 Engine coolant.....15.5 ltr
 Engine oil.....9.0 ltr
 Travel device (Each side).....3.0 ltr

WEIGHTS AND GROUND PRESSURE

Machine	Operating weight	Ground pressure
Backhoe with Dozer Blade	7000 kg	0.34 kgf /cm ²
Backhoe without Dozer Blade	6500 kg	0.32 kgf /cm ²

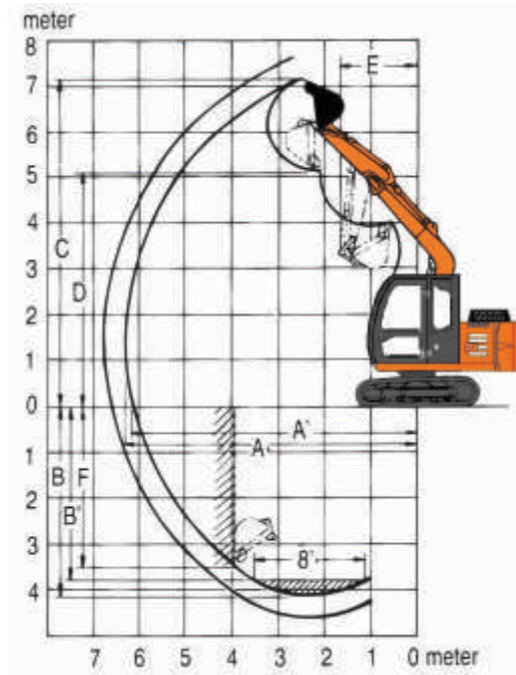
DIGGING FORCES

Bucket digging force.....4800 kgf
 Arm crowd force.....3700 kgf

BUCKETS

Capacity	Width with side cutter	Width without side cutter	Weight	Tooth points	Type
0.30 m ³	750 mm	660 mm	229 kg	4	GP
0.35 m ³	860 mm	770 mm	230 kg	4	Wider GP
0.25 m ³	-	570 mm	208 kg	3	HD
0.10 m ³	-	360 mm	167 kg	2	Narrow
0.68 m ³	-	1 350 mm	240 kg	-	LD

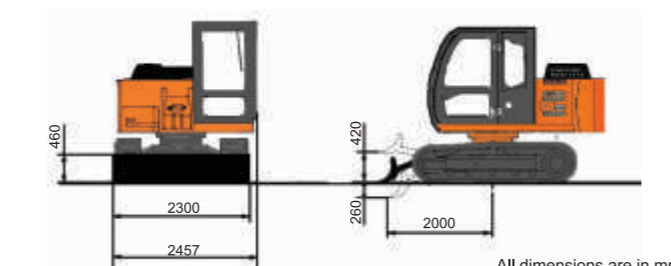
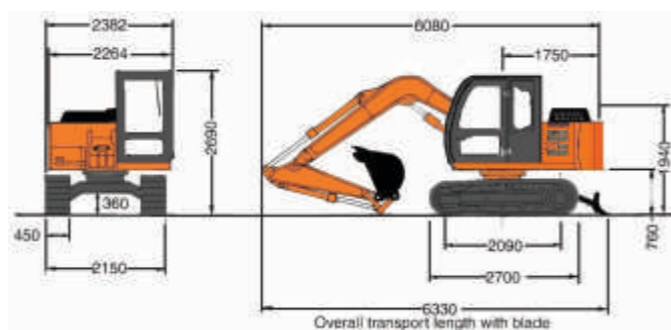
WORKING RANGES



	3720	
Boom length	1620	2120
Arm length	6310	6800
A Max. digging reach	6160	6660
A' Max. digging reach (on ground)	4150	4660
B Max. digging depth	3800	4370
B' Max. digging depth (8' level)	7150	7550
C Max. cutting height	5070	5470
D Max. dumping height	1700	2060
E Min. swing radius	3500	4060
F Max.vertical wall depth		

All dimensions are in mm

DIMENSIONS



All dimensions are in mm

CHALO
 DESH
 BANAYE

TATA HITACHI

Reliable solutions

EXPERIENCE THE POWER OF



EX70

SUPER SERIES



Model : EX70
 Engine Power : 55 PS @ 2000 rpm
 Operating Weight : 7,000 kg
 Bucket Capacity : 0.10 - 0.68 m³



Tata Hitachi Construction Machinery Company Private Limited

Registered Office: Jubilee Building, 45 Museum Road, Bangalore, India 560025

Telephone: +91 80 6695 3301 / 02 / 03 / 04 / 05 | Toll Free : 1800 121 6633

Email: info@tatahitachi.co.in | Website: www.tatahitachi.co.in | [f](#) [t](#) [in](#) [@](#)

These specifications are subject to change without prior notice. The machine depicted may vary from the actual machine. Please contact our nearest office for latest specifications. Accessories shown here are not part of the standard equipment. Performance of the machine may vary with site and operating conditions encountered.

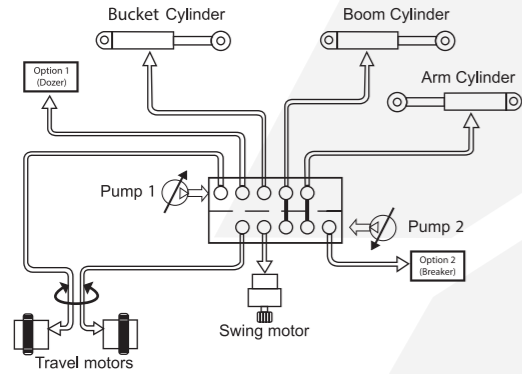
Authorised Dealership

FROM EX70 SUPER V4 PE/NOV/2019

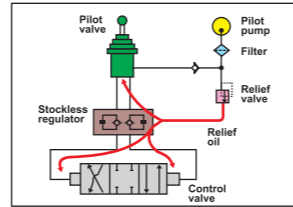
Superior Hydraulics

Hitachi's original Optimum Hydraulic System – Benefits: fast and smooth combined operations for higher performance. It features:

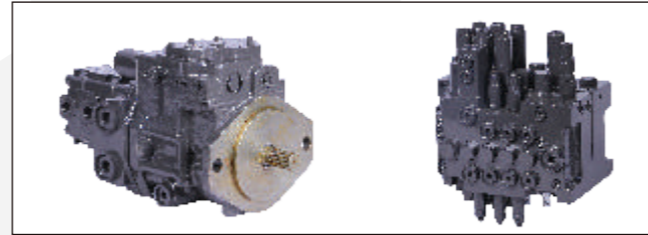
- Original pilot circuit
- Arm regeneration system
- Boom & Arm holding valves
- Spare spool for attachments



Arm Regeneration
Resulting in energy saving with improved productivity



Pilot circuit with Shock-less regulator for responsive, smooth & precise control



Reliable hydraulic aggregates

Unparalleled Versatility

- EX70 comes in various tailor made options and is easily customizable for use with multiple other attachments and accessories.
- EX70 **AQUA** with 600 mm track and wide bucket for marshy underfoot conditions/ salt pan applications
- EX70H version for tougher applications
- EX70 has option of rock breaker piping kits



Aicon rock breaker

EX70H

EX70 AQUA

Power Optimization

- Powered by reliable and fuel efficient Tata 497 NA engine
- Auto Idle and Auto Deceleration (Original Tata Hitachi technology)
- Dial type throttle; Stepper motor for precise engine control
- Mode selection feature [EP mode, HP mode]

- Default EP mode – engine starts in EP mode only, reducing fuel consumption and protecting the engine
- High fuel efficiency



Fuel efficient engine



Dial type throttle

Efficiency Boosters

- Most comfortable heavy duty suspension seat in its class with dual tone fabric
- Ergonomic roomy cabin with single radius A Pillar & handrail
- New and improved audio player (USB+ FM)
- Heat reflective coating on cabin top
- New, premium interior upholstery
- Sleek honeycomb mesh side doors for better airflow
- Cyclonic type air pre-cleaner protects engine from dust
- Upgraded monitor, ergonomic hand grips and controls
- Hydra-mounts for cab mounting
- InSite enabled (Insights into your job site)
- Additional cabin light
- Cabin front guard (Optional)
- Track guards (Optional)



Improved serviceability



Spacious and comfortable working space with well laid out controls



inSite
INSIGHTS INTO YOUR JOB SITE



Honeycomb mesh type ROC door



Ground level service access



Heat reflective coating on cabin top



Premium heat insulating interior upholstery



Cyclonic type air pre-cleaner



New premium audio player (USB + FM)

Return on Investment

- High resale value
- Lower operating cost
- Best in class fuel efficiency
- Wide spread dealer network for easy availability of spare parts
- Field diagnostic vehicle for quicker after sales support
- Peace of mind through extended warranty*
- Extended service intervals for reduced maintenance cost
 - Hydraulic oil change: 4500 hours

NEW

4500 Hrs Hydraulic oil change interval

Default EP Mode resulting in fuel saving

2 years or 5000 hours whichever is earlier*

EXTENDED WARRANTY



Field service vehicle

SUPER SERIES

*Conditions apply

Maintenance intervals mentioned are for bucket operation only and subject to use of genuine and recommended grade of spares for the interval. It is also subject to contamination, levels being within limits to be established from time to time.