

SPECIFICATIONS

ENGINE

Make.....Cummins
Model.....6BT5.9C
Type.....6 cylinder in-line water cooled
Rated Flywheel Power.....133ps @ 2000 rpm
Max Torque.....54.8 kgf-m @ 1300 rpm
Batteries.....2 X 12 V

HYDRAULIC SYSTEM

Main pumps.....2 variable displacements
axial piston pumps
Max. oil flow.....2 X 221 lpm
Pilot pump.....1 gear pump
Max.oil flow.....20 lpm

RELIEF VALVE SETTINGS

Implement circuit.....285 kgf/cm²
Swing circuit.....260 kgf/cm²
Travel circuit.....350 kgf/cm²
Pilot circuit.....40 kgf/cm²

SWING MECHANISM

Swing speed.....13.7 rpm

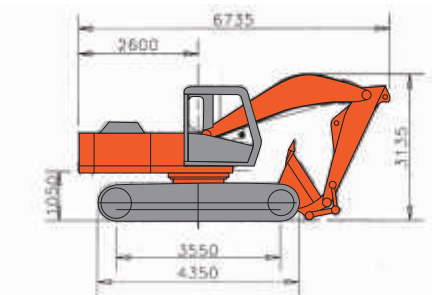
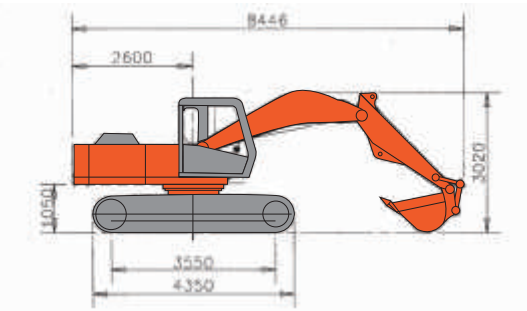
TRAVEL MECHANISM

Travel Speeds.....0-4.2 kmph
Max.traction force.....15,300 kgf
Gradeability.....35° (70% continuous)

UNDERCARRIAGE

No. of upper rollers.....2
No. of lower rollers.....8
No. of track shoes.....52
Shoe width.....500mm

DIMENSIONS



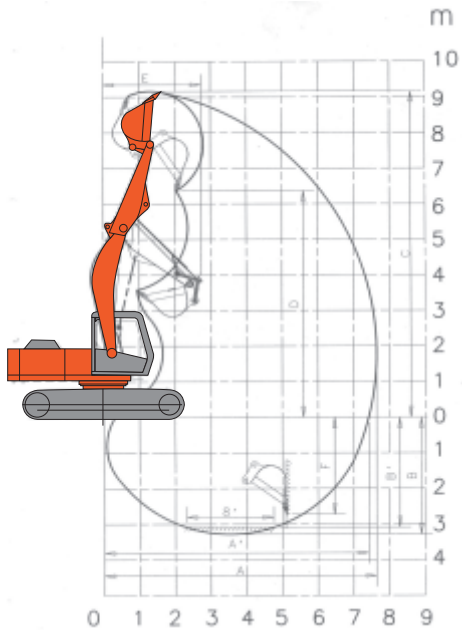
SERVICE REFILL CAPACITIES

Hydraulic tank.....129.0L
Hydraulic system.....220.0 L
Fuel Tank.....310.0 L
Engine Coolant.....35 L
Engine Oil (Sump).....14.0 L
Swing Device.....6.7 L
Travel Device (Each Side).....6.8 L

WEIGHT AND GROUND PRESSURE

Machine	Operating weight	Ground Pressure
BACKHOE	19,600 kg	0.47 kg/cm ²

BACKHOE ATTACHMENT



WORKING RANGES*

	Boom Length	3550
A	Arm length	2450
A'	Max. digging reach	7640
B	Max. digging reach (on ground)	7415
B'	Max. digging depth	3280
C	Max. digging depth (8' level)	3085
D	Max. cutting height	9160
E	Max. dumping height	6370
F	Min. swing radius	2735
	Max. vertical wall depth	2725

* With 0.8cum HD Bucket

All dimensions are in mm

These specifications are subject to change without notice.
Illustrations and photos show the standard models, and may or may not include optional equipment, accessories, and all standard equipment with some differences in color and features.
Before use, read and understand the Operator's Manual for proper operation.

Authorised Dealer

Tata Hitachi Construction Machinery Company Private Limited

Registered Office: Jubilee Building 45 Museum Road Bangalore 560 025 India
Telephone: +91 80 66953301 02 03 04 05 Fax: +91 80 6695 3309 2532 5792
Email: info@tatahitachi.co.in Website: www.tatahitachi.co.in

Toll Free: 1800 121 6633

EX Super+ series

TATA HITACHI

Reliable solutions

EX200LC
Super+
SERIES

Tunnel Excavator



TUNNEL EXCAVATOR

Rated Engine Power : 133 PS @ 2000 rpm
Operating Weight Backhoe : 19,600 kg
Bucket Capacity : 0.8 cum HD



The **Tata-Hitachi EX200LC Tunnel Excavator** is an innovative 20-ton offering from Tata Hitachi, the pioneer in hydraulic excavators.

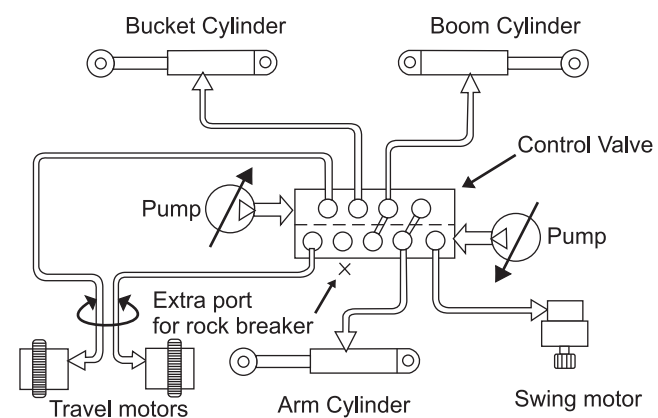
This versatile machine is powered by the highly fuel-efficient Cummins diesel engine and has an Optimum Hydraulic System (OHS) that ensures combined, smooth, fuel-efficient and speedy operations.

This machine has been specially designed with Short Boom and Short Swing Radius to cater to your tunnel excavation needs.

EFFICIENT HYDRAULIC SYSTEM

The better and more reliable an excavator's hydraulics, the better and more efficiently it gets the job done at less cost. Optimum Hydraulic System gives high independence to each actuator for easy and smooth combined operations.

OPTIMUM HYDRAULIC SYSTEM



FUEL - SAVING PUMP SYSTEM

In order to prevent energy loss in the hydraulic system, this pump system smoothly increases delivery flow of the hydraulic pumps in proportion to the control lever stroke, minimising the delivery flow when the lever is in neutral. **This excellent pump system gives superior performance in inching operations, eliminating loss.**

CROSS - SENSING SUMMATION SYSTEM

Tata - Hitachi excavators have two variable displacement piston pumps interconnected, to detect mutual delivery pressure for 100% use of engine output resulting in higher working speeds of actuators and reduced energy loss.

STURDY ATTACHMENTS, RUGGED UNDERCARRIAGE

The EX200 LC is equipped with reinforced front attachment and undercarriage, making it suitable for heavy-duty operations. Greater traction force, faster travel speeds, a rugged undercarriage with HD track and high ground clearance give it exceptional mobility. Track guards are provided as standard fitment. Reinforced track frame at idler locations is provided to suit granite and marble quarrying applications.

