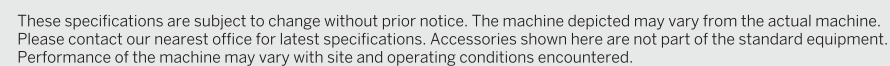


Model		ZX20U-5A
Operating Weight	Kg	2350 (Four-Post Canopy)
Standard Bucket	M3	0.07
Performance		
Swing Speed	Min-1 (rpm)	9.2
Travel Speed	Km/h	4.4 / 2.6
Grade-ability	%	47% (25°)
Maximum cutting force	kN (kgf)	18.6 (1900)
Engine		
Model		3TNV76
Make		Yanmar
Type		4 Cycle, water cooled, 3 cylinder swirl-chamber type
Rated Power	kW/min (PS/rpm)	13.0 / 2200 (17.7/2200)
Displacement	CC	111.5
Hydraulic System		
Hydraulic Pump		2 Variable displacement axial piston pumps, 1 gear pump (for operation)
Main Relief Valve implement circuit	Mpa (kgf/cm2)	20.6 (210)
Swing Motor		Fixed displacement axial piston motor
Travel Motor		Variable displacement axial piston motor
Front		
Boom Swing Angle	Degree	Left 70° / Right 60°
Undercarriage		
Standard Shoe width	mm	250
Crawler total width and blade width	mm	1450
Oil Capacities		
Fuel Tank	L	34
Hydraulic Oil Tank	L	19.0
Hydraulic System	L	30.0



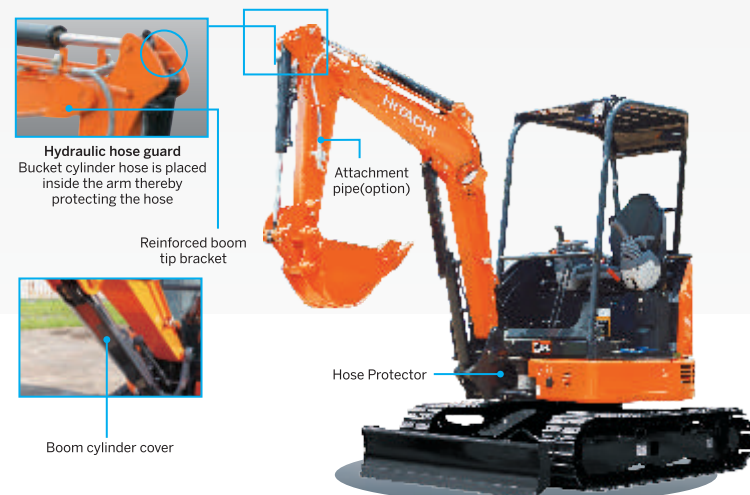
17.7 PS @ 2200 rpm | 2350 kg | 0.07 m³

COMPACT & POWER PACKED



EXCELLENT PERFORMANCE AND DURABILITY

- High speed with low fuel consumption
- Efficient to work in hard strata applications
- Advanced Hydraulics for smooth & swift operations
- Sturdy front-end attachment with reinforced bucket



OPERATOR COMFORT & SAFETY

- Low noise engine
- Ergonomically designed operator space
- Most comfortable seat with mid back rest
- 4 pillar canopy with ROPS /TOPS /OPG



COMPACT AND VERSATILE

- Zero tail swing
- Boom Swing feature to trench alongside a wall
- Easy to transport on a small carrier pick up vehicle.
- Best suited for constrained spaces



SIMPLIFIED MAINTENANCE

- Wide open covers with dust guard
- Ground level grouped servicing of all major filters
- Parallel ROC – better cooling efficiency
- Vertical slide opening engine cover
- HN Bushes help long time grease retention

