

SPECIFICATIONS

ENGINE	
Model.....	TATA 697 NA
Type.....	Water cooled, 6-cylinder in-line diesel engine
Engine power.....	76 PS @ 2200 rpm
Max.torque.....	25.4 Kgf-m @ 2000 rpm
Batteries.....	2 X 12V

HYDRAULIC SYSTEM	
Main pumps.....	2 variable displacement axial piston pumps
Flow rate.....	2 X 115 lpm
Pilot pump.....	1 gear pump
Flow rate.....	23 lpm

SUPERSTRUCTURE	
Swing speed.....	11.8 rpm

RELIEF VALVE SETTINGS	
Implement circuit.....	285 kgf/cm ²
Swing circuit.....	285 kgf/cm ²
Travel circuit.....	355 kgf/cm ²
Pilot circuit.....	40 kgf/cm ²

UNDERCARRIAGE	
Travel speed	0 - 4.3 kmph
Max.traction force.....	7500 kgf
Gradeability.....	35° (70% continuous)
No.of upper rollers (each side).....	1
No. of lower rollers (each side).....	6
No. of track shoes (each side).....	41
Shoe width.....	500 mm

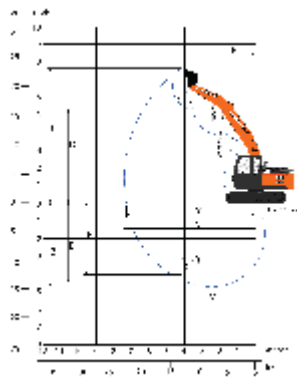
SERVICE REFILL CAPACITIES	
Hydraulic tank.....	72.0 ltr
Hydraulic system.....	126.0 ltr
Fuel tank.....	250.0 ltr
Engine coolant.....	24.0 ltr
Engine oil.....	17.0 ltr
Swing device.....	3.2 ltr
Travel device (Each side).....	3.5 ltr

WEIGHTS AND GROUND PRESSURE		
Machine	Operating weight	Ground pressure
Backhoe	11800 kg	0.41 kgf /cm ²

DIGGING FORCE	
BACKHOE	
Bucket digging force	7300 kgf
Arm crowd force.....	5400 kgf

BUCKETS				
BACKHOE				
Bucket type	Capacity (PCSA)	Width without side cutter	Weight	Tooth points
GP	0.60 m ³	1034 mm	478 kg	4
HD	0.52 m ³	930 mm	525 kg	4
Trench	0.23 m ³	490 mm	350 kg	2

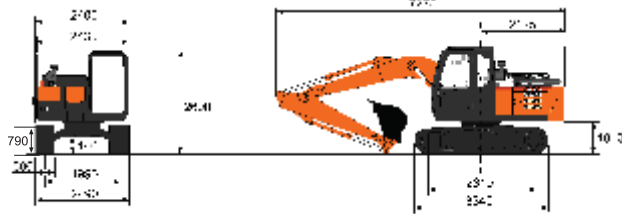
WORKING RANGES



BACKHOE		
	Boom length	4250
	Arm length	1950
A	Max. digging reach	7410
A'	Max. digging reach (on ground)	7250
B	Max. digging depth	4720
B'	Max. digging depth (8' level)	4460
C	Max. cutting height	7630
D	Max. dumping height	5280
E	Min. swing radius	2460
F	Max. vertical wall	4040

All dimensions are in mm

DIMENSIONS



All dimensions are in mm

The Specifications are subject to change without prior notice. The machine depicted may vary from the actual machine please contact our nearest office for latest specifications. Accessories shown here are not part of the standard equipment performance of the machine may vary with site and operating conditions encountered

Tata Hitachi Construction Machinery Company Private Limited
Registered Office : Jubilee Building 45 Museum Road Bangalore 560 025 India
Telephone : +91 80 66953301 02 03 04 05 Fax : +91 80 66953309/25325792
E-mail : info@tatahitachi.co.in Website : www.tatahitachi.co.in
Toll Free Number : 1800 121 6633

Authorised Dealer

THCMEX130SUPER-UPRE/APRIL/2019
APRIL/2019/2000



TATA HITACHI

Reliable solutions

EXPERIENCE THE POWER OF



EX130
Super
SERIES

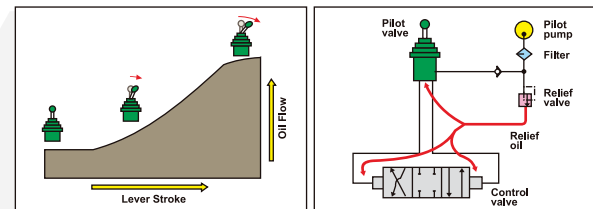
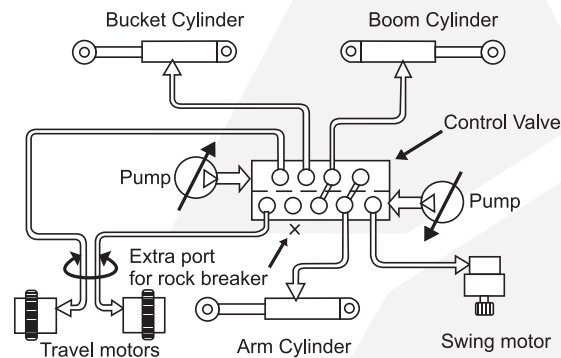


Model : EX130
Engine Power : 76 PS @ 2200 rpm
Operating Weight : 11,800-12,146 kg
Bucket Capacity : 0.23 - 0.60 m³

Superior Hydraulics

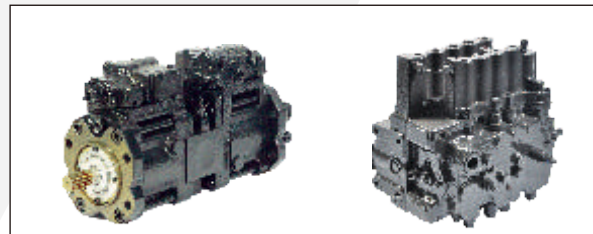
Hitachi's original Optimum Hydraulic System – Benefit: fast and smooth combined operations for higher performance. It features:

- ✦ Cross sensing summation system
- ✦ Fuel saving pump system
- ✦ Original pilot circuit
- ✦ Spare spool for attachments
- ✦ Absolute type hydraulic filter



Oil flows in proportion to lever stroke. Load is minimum at neutral position saving fuel

Higher pressure circuit is actuated by a lower pressure pilot circuit reducing jerks on operator



Reliable hydraulic aggregates

Unparalleled Versatility

- ✦ EX130 comes in various tailor made options and is easily customizable for use with multiple other attachments and accessories
- ✦ EX130 has options of factory fitted rock breaker piping kits with return line filter



Alicon rock breaker

Rock breaker piping kit

Power Optimization

- ✦ Powered by reliable and fuel efficient Tata 697 NA engine
- ✦ Auto Idle and Auto Deceleration (Original Tata Hitachi technology)
- ✦ Dial type throttle; Stepper motor for precise engine control
- ✦ Mode selection feature [EP mode, HP mode]
- ✦ Default EP mode – engine starts in EP mode only reducing fuel consumption and protecting the engine
- ✦ High fuel efficiency



Fuel efficient engine



Dial type throttle

Efficiency Boosters

- ✦ Most comfortable heavy duty suspension seat in its class with dual tone fabric
- ✦ Ergonomic roomy cabin with single radius A Pillar and handrail
- ✦ New and improved audio player (USB+ FM)
- ✦ Heat reflective coating on cabin top
- ✦ New premium upholstered interiors
- ✦ Sleek honeycomb mesh side doors for better airflow
- ✦ Cyclonic air pre-cleaner protects engine from dust
- ✦ Upgraded monitor, ergonomic hand grips and controls
- ✦ Hydra-mounts for cab mounting
- ✦ InSite enabled (Insights into your job site)
- ✦ Two additional cab lights
- ✦ Cabin front guard (Optional)
- ✦ Track guards (Optional)



Improved serviceability



Spacious and comfortable working space with well laid out controls



Honeycomb mesh type ROC door



Ground level service access



Heat reflective coating on cabin top



Premium heat insulating interior upholstery



Cyclonic type air pre-cleaner



New premium audio player (USB + FM)

Return on Investment

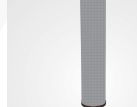
- ✦ High resale value
- ✦ Low operating cost
- ✦ Best in class fuel efficiency
- ✦ Wide spread dealer network for easy availability of spare parts
- ✦ Field diagnostic vehicle for quicker after sales support
- ✦ Peace of mind through extended warranty*
- ✦ Extended service intervals for reduced maintenance cost
 - Hydraulic oil change: 4500 hours
 - Hydraulic filter change: 1000 hours



4500 Hrs Hydraulic oil change interval



Default EP Mode resulting in fuel saving



1000 Hrs Hydraulic filter change interval



2 years or 5000 hours whichever is earlier*



Field service vehicle



Maintenance intervals mentioned are for bucket operation only and subject to use of genuine and recommended grade of spares for the interval. It is also subject to contamination levels being within limits to be established from time to time.