

SPECIFICATIONS

ENGINE	
Model.....	Cummins 6BT5.9C
Type.....	6 cylinder in-line water cooled
Rated fly wheel power.....	133 PS @ 2000 rpm
Max.torque.....	54.8 kgf-m @ 1300 rpm
Batteries.....	2 X 12 V

HYDRAULIC SYSTEM	
Main pumps.....	2 variable displacements axial piston pumps
Max. oil flow.....	2 X 221 lpm
Pilot pump.....	1 gear pump
Max. oil flow.....	20 lpm

SUPERSTRUCTURE	
Swing speed.....	13.7 rpm

RELIEF VALVE SETTINGS	
Implement circuit.....	285 kgf/cm ²
Swing circuit.....	260 kgf/cm ²
Travel circuit.....	350 kgf/cm ²
Pilot circuit.....	40 kgf/cm ²

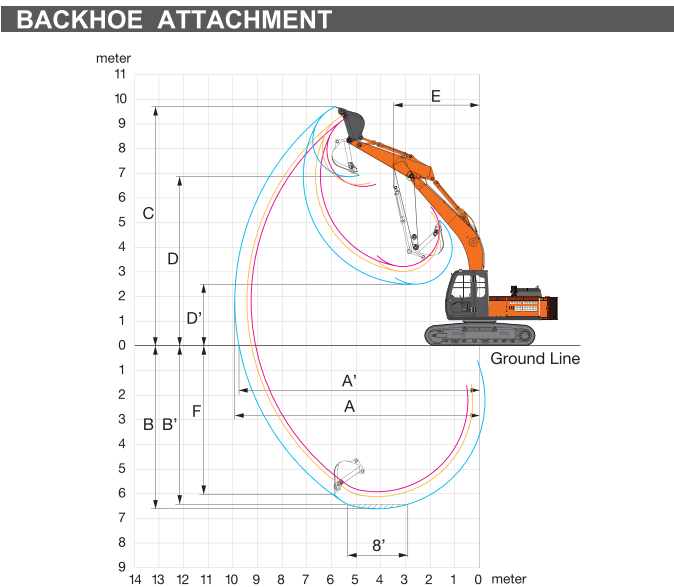
UNDERCARRIAGE	
Travel speeds.....	0-4.2 kmph
Max.traction force EX200LC.....	15,300 kgf
Gradeability.....	35° (70% continuous)
No.of upper rollers.....	2
No. of lower rollers.....	8
No. of track shoes.....	52
Shoe width EX200LC.....	500 mm

SERVICE REFILL CAPACITIES	
Hydraulic tank.....	129.0 ltr
Hydraulic system.....	220.0 ltr
Fuel tank.....	315.0 ltr
Engine coolant.....	35.0 ltr
Engine oil (Sump).....	14.0 ltr
Swing device.....	6.7 ltr
Travel device (Each side).....	6.8 ltr

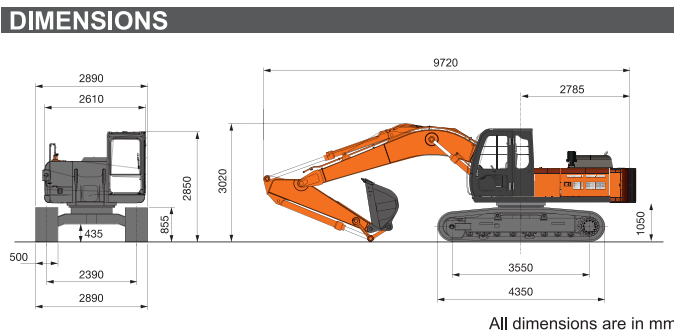
WEIGHTS AND GROUND PRESSURE		
Machine	Operating weight	Ground pressure
EX200LC Backhoe	20,000 kg	0.52 kgf /cm ²

DIGGING FORCES			
BACKHOE			
Bucket digging forces.....11000 kgf			
Arm length	1.90 m	2.22 m	2.90 m
Arm digging force	12500 kgf	11300 kgf	8800 kgf

BUCKETS			
BACKHOE			
Capacity	Width without side cutter	Weight (approx.)	Tooth points
0.86 m ³	997 mm	940 kg	4
0.91 m ³	1150 mm	741 kg	5
1.00 m ³	1256 mm	805 kg	5
1.20 m ³	1450 mm	690 kg	-
1.5 m ³	1780 mm	567 kg	-



WORKING RANGES				
BACKHOE				
	Boom length	5680		
	Arm length	1900	2220	2900
A	Max. digging reach	9110	9250	9910
A'	Max. digging reach (on ground)	8920	9060	9740
B	Max. digging depth	5580	5910	6600
B'	Max. digging depth (8' level)	5340	5670	6420
C	Max. cutting height	9340	8990	9400
D	Max. dumping height	6480	6230	6610
E	Min. swing radius	4010	3720	3660
F	Max.vertical wall depth	4950	5050	5980



Tata Hitachi Construction Machinery Company Private Limited
Registered Office: Jubilee Building, 45 Museum Road, Bangalore, India 560025
Telephone: +91 80 6695 3301 / 02 / 03 / 04 / 05 | Toll Free : 1800 121 6633
Email: info@tatahitachi.co.in | Website: www.tatahitachi.co.in |

These specifications are subject to change without prior notice. The machine depicted may vary from the actual machine. Please contact our nearest office for latest specifications. Accessories shown here are not part of the standard equipment. Performance of the machine may vary with site and operating conditions encountered.

Authorised Dealership



TATA HITACHI

Reliable solutions

THE SUPER ADVANTAGE

EX200LC

Super

SERIES

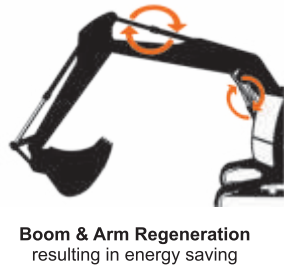
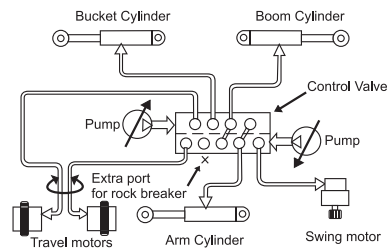


Model : EX200LC
Engine Power : 133 PS @ 2000 rpm
Operating Weight : 20,000 kg
Bucket Capacity : 0.86 - 1.5 m³

Superior Hydraulics

Hitachi's original Optimum Hydraulic System – Benefit: fast and smooth combined operations for higher performance. It features:

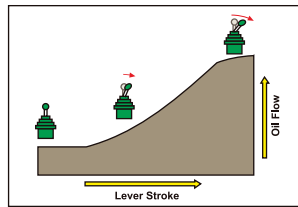
- Cross sensing summation system
- Fuel saving pump system
- Original pilot circuit
- Boom and Arm regeneration, holding valves
- Spare spool for attachments
- Absolute type hydraulic filter



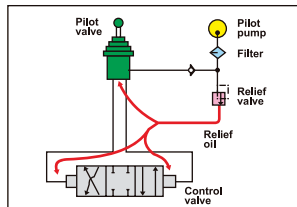
Reliable hydraulic aggregates



Absolute type hydraulic filter for complete hydraulic system protection against contamination



Oil flows in proportion to lever stroke. Load is minimum at neutral position saving fuel



Higher pressure circuit is actuated by a lower pressure pilot circuit reducing jerks on operator

Unparalleled Versatility

- Capable of working in high altitudes
- With cold start kit it is capable of working in extremely cold environment
- EX200LC has options of factory fitted rock breaker piping kits with return line filter
- EX200LC comes in various tailor made options and is easily customizable for use with multiple other attachments and accessories
- EX200LC has options of factory fitted rock breaker piping kits with return line filter



Power Optimization

- Powered by reliable and fuel efficient Cummins 6BT5.9C engine.
- Auto Idle and Auto Deceleration (Original Tata Hitachi technology)
- Stepper motor based precise engine speed control; Dial type throttle
- Mode selection feature [EP mode, HP mode]
- Default EP mode – engine starts in EP mode only, reducing fuel consumption and protecting the engine
- Engine efficiency improvement for lower fuel consumption



Fuel efficient engine



Dial type throttle

Efficiency Boosters

- Cold start kit
- Most comfortable heavy duty suspension seat in its class with dual tone fabric
- Ergonomic roomy cabin with single radius A Pillar and handrail
- New and improved audio player (USB+ FM)
- Heat reflective coating on cabin top
- Engine hot air draft redirection
- New premium upholstered interiors
- New hinged sleek honeycomb mesh ROC door with lock
- New honeycomb mesh pump side door for better airflow
- Cyclonic type pre-cleaner
- Aluminum ROC for better cooling
- Reduced engine hood height for superior visibility
- Upgraded monitor, ergonomic hand grips and controls
- Hydra-mounts for cab mounting
- Battery relay protection cover
- 2 extra cab lights & Front guard as standard



Improved serviceability



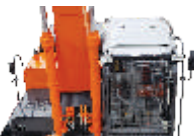
Spacious and comfortable working space with well laid out controls



Honeycomb meat type ROC door



Ground level service access



Heat reflecting coating on cabin top



Premium interior upholstery



Cyclonic type pre-cleaner



New premium audio player (USB + FM)

Return on Investment

- Highest resale value
- Lower operating cost
- Best in class fuel efficiency
- Wide spread dealer network for easy availability of spare parts
- Field diagnostic vehicle for quicker after sales support
- Peace of mind through extended warranty
- Extended service intervals for reduced maintenance cost:
 - Hydraulic oil change: 3000 Hours
 - Hydraulic filter change: 1500 hours



Default EP Mode resulting in fuel saving



3000 Hrs Hydraulic oil change interval



1500 Hrs Hydraulic filter change interval



2 years or 5000 hours whichever is earlier*

Super SERIES



Maintenance intervals mentioned are for bucket operation only and subject to use of genuine and recommended grade of spares for the interval. It is also subject to contamination levels being within limits to be established from time to time.

*Conditions apply