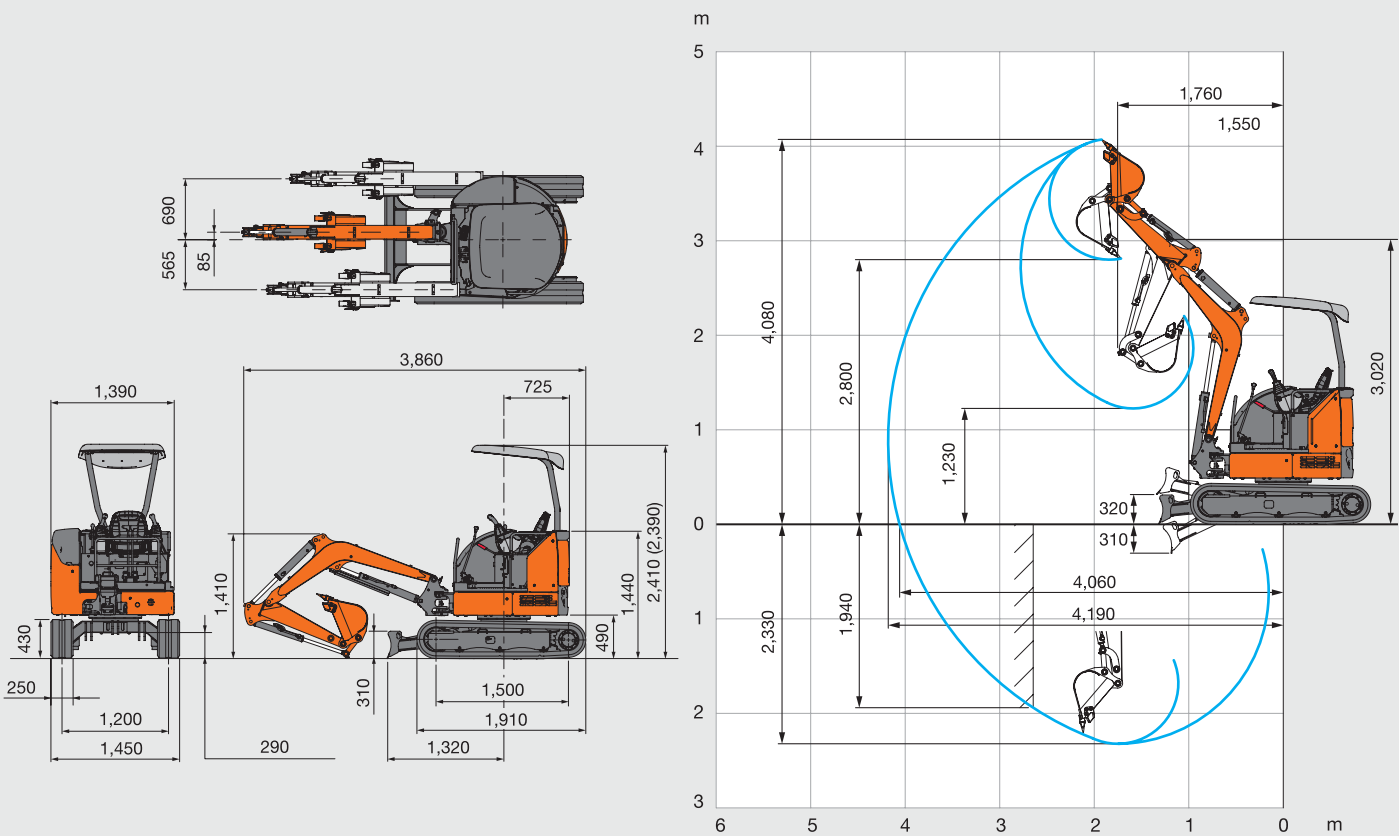


■ Specifications

Model		ZX20U-5A
Operating Weight	Kg	2350 (Four-Post Canopy)
Standard Bucket	M3	0.07
Performance		
Swing Speed	Min-1 (rpm)	9.2
Travel Speed	Km/h	4.4 / 2.6
Grade-ability	%	47% (25°)
Maximum cutting force	kN (kgf)	18.6 (1900)
Engine		
Model		3TNV76
Make		Yanmar
Type		4 Cycle, water cooled, 3 cylinder swirl-chamber type
Rated Power	kW/min (PS/rpm)	13.0 / 2200 (17.7/2200)
Displacement	CC	111.5
Hydraulic System		
Hydraulic Pump		2 Variable displacement axial piston pumps, 1 gear pump (for operation)
Main Relief Valve implement circuit	Mpa (kgf/cm2)	20.6 (210)
Swing Motor		Fixed displacement axial piston motor
Travel Motor		Variable displacement axial piston motor
Front		
Boom Swing Angle	Degree	Left 70° / Right 60°
Undercarriage		
Standard Shoe width	mm	250
Crawler total width and blade width	mm	1450
Oil Capacities		
Fuel Tank	L	34
Hydraulic Oil Tank	L	19.0
Hydraulic System	L	30.0

■ Dimensions / Working Ranges



Tata Hitachi Construction Machinery Company Private Limited
Registered Office: Jubilee Building, 45 Museum Road, Bangalore, India 560025
Telephone: +91 80 6695 3301 / 02 / 03 / 04 / 05 | Toll Free : 1800 121 6633
Email: info@tatahitachi.co.in | Website: www.tatahitachi.co.in |     

These specifications are subject to change without prior notice. The machine depicted may vary from the actual machine. Please contact our nearest office for latest specifications. Accessories shown here are not part of the standard equipment. Performance of the machine may vary with site and operating conditions encountered.

Authorised Dealership



TATA HITACHI

COMPACT AND POWERPACKED



ZAXIS20U

GI SERIES

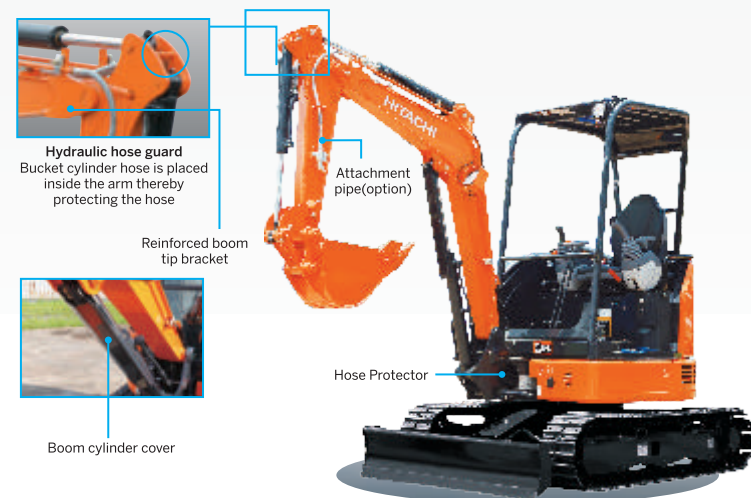
17.7 PS @ 220 rpm | 2350 kg | 0.07 m³

COMPACT & POWER PACKED



EXCELLENT PERFORMANCE AND DURABILITY

- High speed with low fuel consumption
- Efficient to work in hard strata applications
- Advanced Hydraulics for smooth & swift operations
- Sturdy front-end attachment with reinforced bucket



OPERATOR COMFORT & SAFETY

- Low noise engine
- Ergonomically designed operator space
- Most comfortable seat with mid back rest
- 4 pillar canopy with ROPS /TOPS /OPG



COMPACT AND VERSATILE

- Zero tail swing
- Boom Swing feature to trench alongside a wall
- Easy to transport on a small carrier pick up vehicle.
- Best suited for constrained spaces



SIMPLIFIED MAINTENANCE

- Wide open covers with dust guard
- Ground level grouped servicing of all major filters
- Parallel ROC – better cooling efficiency
- Vertical slide opening engine cover
- HN Bushes help long time grease retention

