



# **TATA HITACHI**

Reliable solutions

P R O F I L E



# A B O U T U S

60+ years in India  
(Since 1961)

A JV between Tata  
Motors(40%) and Hitachi  
Construction Machinery  
Co. Ltd, Japan(60%)

Providing Equipment &  
Services for  
Infrastructure & Mining  
Sectors

TATA  
MOTORS

40%

HITACHI CONSTRUCTION  
MACHINERY

60%

**TATA HITACHI**



**TATA HITACHI**

# Our Legacy

## Tata Hitachi Construction Machinery



**TATA**

**“LEADERSHIP WITH TRUST”**  
A Distinct value system and ethics

**HITACHI**

**“RELIABLE SOLUTIONS”**  
Japanese quality and  
technological prowess





# Mission & Vision



## MISSION

Be the preferred partner for providing reliable solutions for mining and infrastructure sectors

While dominating the domestic market, we will become a global manufacturing and development hub

Our hallmark shall be our motivated people, customer-centric culture, superior technologies, and strong partnerships, all working safely in unison with environment and society.

## VISION

Reliable Solutions for building a greater tomorrow.

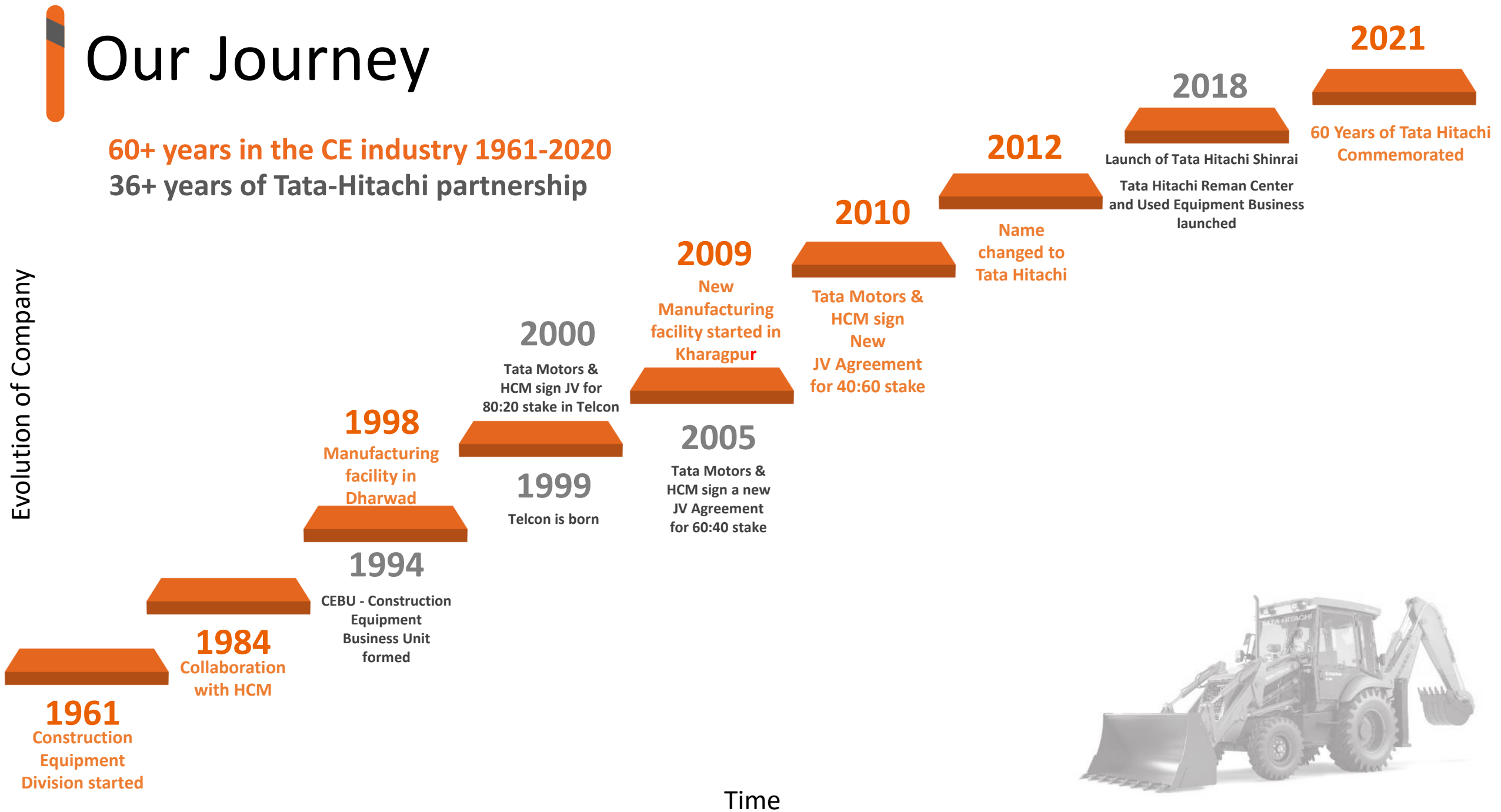




# Our Journey

60+ years in the CE industry 1961-2020  
36+ years of Tata-Hitachi partnership

Evolution of Company



Time



TATA HITACHI

# Our Facilities

*The Techno Giant*





# Tata Hitachi Plants

*The Techno Giant*



Dharwad



Kharagpur





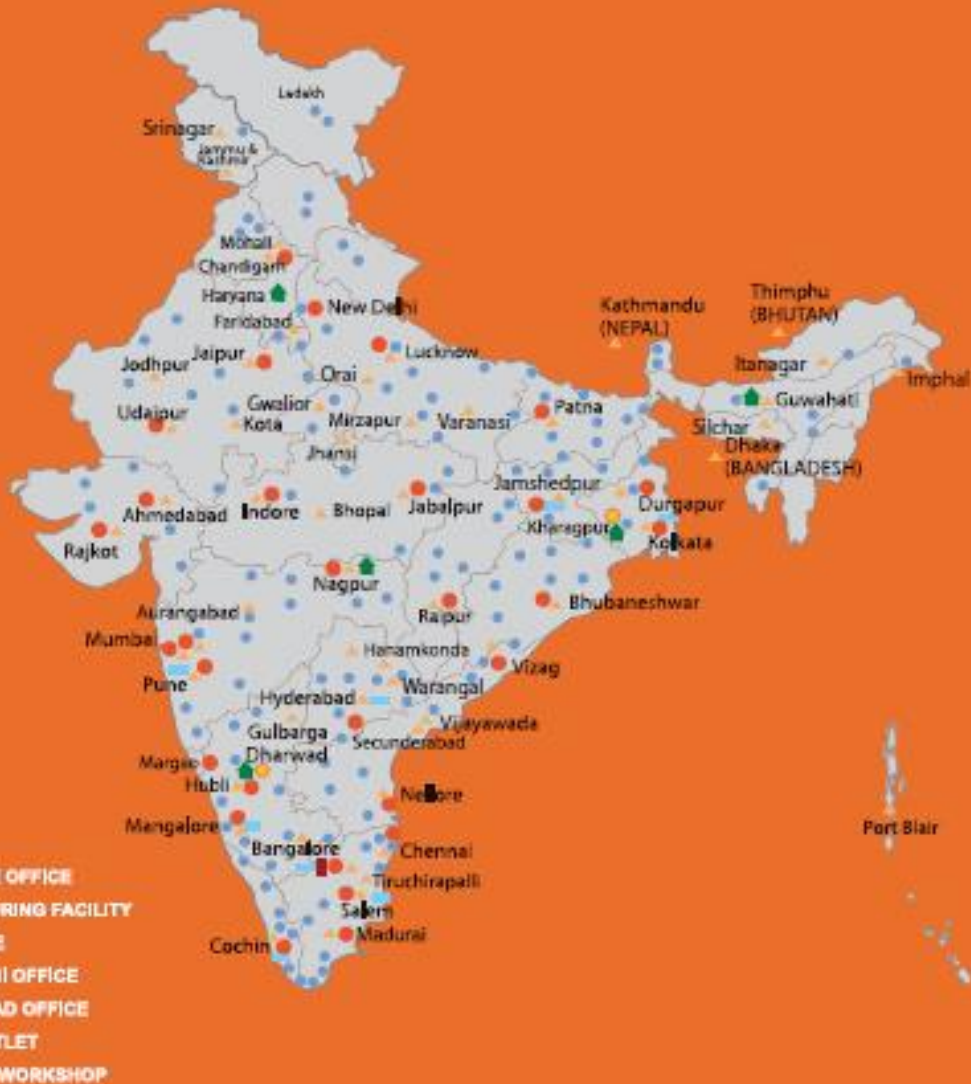
# Spare Parts Warehouse

Locations - Nagpur, Dharwad, Haryana, Kharagpur, Guwahati





# Our Network



## Unmatched Support Network

Regional Offices: 6

Branch Offices: 28

Parts Main Warehouse: Nagpur

Other Parts Warehouses : Dharwad , Kharagpur and Faridabad

## Large Network of Dealers

Dealers :

Domestic : 47

International : 4

Touch Points : 250+

# Integrated Dealership Facility





A large orange Tata Hitachi excavator is the central focus, positioned in a tropical environment with palm trees and a yellow bus in the background. The scene is dimly lit, with the excavator's arm and body clearly visible against the darker background. The text 'TATA HITACHI' is prominently displayed in white, bold, sans-serif font across the middle of the image.

**TATA HITACHI**

**O U R P R O D U C T S**

# Equipment Applications

## INFRASTRUCTURE



Building Foundations



Urban Infrastructure



Irrigation Canals

## MINING



Stone Quarrying



Granite Mining



Coal Mining



# Infrastructure

Wide range of machines and attachments





# Infrastructure

## Urban Infrastructure

Helping build  
India's cities.





# Infrastructure

## Backhoe Loader

Backhoe Loaders to  
address every  
customer need.





# Infrastructure

## Irrigation Canals

Helping contractors  
across the country  
in meeting  
deadlines.



# Infrastructure

## Wagon Loading

Helping meet the nations demand for power generation in coal mines.





# Infrastructure

## Mini Excavators

Range of Mini  
Excavators to  
address every  
customer need.





# Mining

## Quarry Marvels

Machines designed  
for tough  
applications like  
blue metal  
quarrying.





# Mining

## Granite Mining

Machines designed  
to excel in tough  
applications like  
Granite mining.





# Mining

## OB Removal

Machines designed  
for high  
productivity in  
applications like OB  
removal.





# Attachments and Customized Applications

Tata Hitachi offers customized attachments to address specific customer needs.



# Customization

## Super Long Reach

Ability to customize  
products for  
addressing specific  
customer needs.





# Customer Support

## Commissioning

- PDI
- 0-100 Hours Service
- Training (operator / mechanic)

## Warranty

- 0-2000 Hrs
- 6 visits
- Warranty Closing Service



## “Life Cycle Support”

### Full Maintenance Contract

#### Overhaul

- Structures
- Hydraulics
- Engine

## Post-Warranty

- Annual Maintenance Contract
- Annual Service Contract
- Site Support Agreement

**TATA HITACHI**

**EXTENDED WARRANTY**  
COMPLETE PEACE OF MIND



**UPTO 3 YEARS / 7500 HOURS\***

AVAIL EXTENDED WARRANTY ON **STRUCTURES** AND **POWERTRAIN** AND GET COMPLETE PEACE OF MIND

 3 machine health check visits per year

 Complete peace of mind

 Trouble free operation

 Protection from unexpected expenses

 Increased machine uptime

 Increased resale value

Tata Hitachi Construction Machinery Company Private Limited  
Jubilee Building, 45 Museum Road, Bangalore - 560 025, India | [www.tatahitachi.co.in](http://www.tatahitachi.co.in) | 1800 121 6633

\*Terms and conditions apply. Cost and validity of extended warranty will differ basis the product model.

# Used Equipment

**CHALO DESH BANAYE**

**TATA HITACHI**

**GIVE THE OLD**



**GET THE NEW**



Bring in your old or used Backhoe Loader and exchange it for **Tata Hitachi Shinrai** at a special price\*

Mr. Ramesh 95009 67795, Mr. Karthik 95009 67778

\*Conditions Apply

**CHALO DESH BANAYE**

**TATA HITACHI**

**GIVE THE OLD**



**GET THE NEW**

Bring in your old or used excavator and exchange it for a new machine of your choice at a never before deal\*.

Get a better deal if you are using Genuine Tata Hitachi Spare Parts.

\*Conditions Apply



# Value Added Services

**SOLUTIONS SHOULD ADVISE.  
NOT JUST REPORT.**

ConSite

-  MONTHLY REPORT VIA E-MAIL
-  EMERGENCY ALARM
-  CAUTION ALARM
-  PERFORMANCE ANALYSIS
-  SITE EFFICIENCY PARAMETERS



Download the ConSite Pocket App from Google Play store & Apple store.



Available on **ZAXIS-GI series**

inSite  
INSIGHTS INTO YOUR JOB SITE

**BE IN SYNC WITH YOUR MACHINES**



\*SMS services to stay updated



Available on **EX Super + series, SHINRAI & TL340H**



**TATA HITACHI**

**V O I C E   O F   O U R   C U S T O M E R S**





**Dinesh Unde**

Rahuri, Ahmednagar



**“EXCELLENT FUEL AVERAGE LTR/HR  
EVEN IN HARD AND TOUGH JOBS”**



**TATA HITACHI**  
**EX200LC**



**Arun Dangi**

Balaji Stone Crusher - Khilchipur, Rajgarh District

**“WE ALWAYS USE TATA HITACHI  
GENUINE SPARE PARTS WHICH  
SAVES US FROM BIGGER  
MECHANICAL FAILURES”**





A large orange Tata Hitachi Shinrai BX80 excavator is shown in the background, working on a construction site. The excavator has "TATA HITACHI" and "SHINRAI BX80" written on its side. In the foreground, a man with a mustache and a red tilak on his forehead is looking at the camera. A circular inset in the bottom right shows the excavator loading a pile of stones.

**TATA HITACHI  
SHINRAI**  
• RELIABLE • TRUSTWORTHY • CAPABLE

A portrait of Mukesh Yadav, a man with a mustache and a red tilak on his forehead, wearing a yellow shirt. The portrait is overlaid on a semi-transparent orange circle.

**Mukesh Yadav**

Balaji Borewells, Indore

**"TATA HITACHI SHINRAI IS POWERFUL  
AND VERY EFFICIENT"**



# TATA HITACHI TL 340H



**“TATA HITACHI TL 340H WHEEL LOADER  
CROSSED 5000 HOURS  
& WORKS CONTINUOUSLY  
WITHOUT ANY BREAKDOWNS”**

**P. SAI GAUTHAM**

Partner - SVN Metal Industry - Hyderabad



# TATA HITACHI ZAXIS 140<sub>H</sub>



**“TATA HITACHI ZAXIS 140H  
EASILY FILLS 3-4 DUMPERS WITHIN  
THE SHORTEST SPAN OF TIME”**



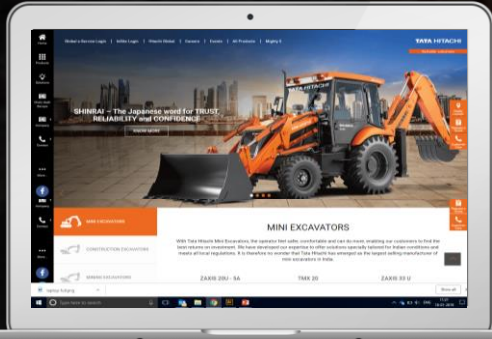
**Radheshyam Chouhan**

Karedi, Tehsil, Rajgarh district, Madhya Pradesh

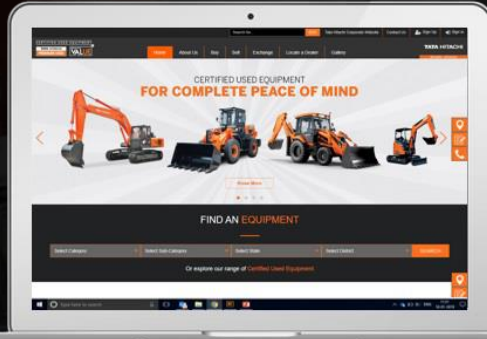


# Digital Footprint – Websites and Apps

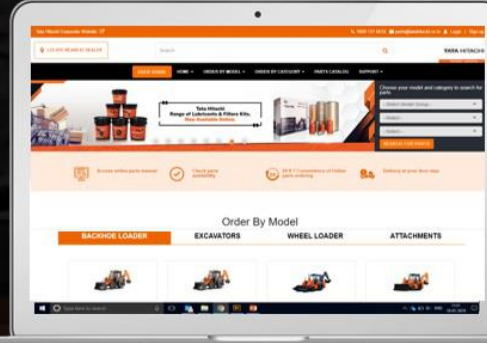
*The Techno Giant*



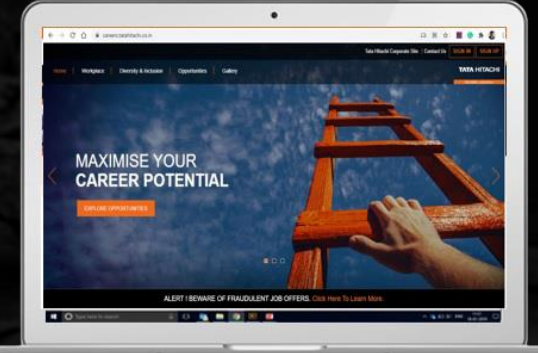
[www.tatahitachi.co.in](http://www.tatahitachi.co.in)



[www.usedequipment.tatahitachi.co.in](http://www.usedequipment.tatahitachi.co.in)



[www.tatahitachiparts.com](http://www.tatahitachiparts.com)



[www.careers.tatahitachi.co.in](http://www.careers.tatahitachi.co.in)



[www.edost.tatahitachi.co.in](http://www.edost.tatahitachi.co.in)



e-Dost Application



# Digital Footprint – Websites and Apps

*The Techno Giant*



**Shinrai Application**



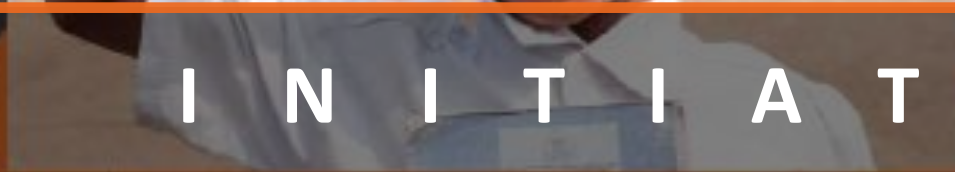
**ZAXIS Application**



C S R

I N I T I A T

I V E S



LITERACY | HEALTH CARE | SOCIAL INFRASTRUCTURE | SKILL DEVELOPMENT | AFFIRMATIVE ACTION



# Skill Development



- Our commitment to employability & skill development
- Two Operator Training Schools at Dharwad and Kharagpur
- Training on operation and maintenance of excavators and backhoe loaders






# THE ROAD AHEAD

- Government focus continues in infrastructure
- Tata Hitachi continues its quest in supporting this infrastructure thrust.







T H A N K Y O U

For more details visit: [www.tatahitachi.co.in](http://www.tatahitachi.co.in)

