

EXPERIENCE THE POWER OF



EX200LC
Super 
SERIES

Model : EX200LC

Engine Power : 133 PS @ 2000 rpm

Operating Weight : 20,100 kg

Bucket Capacity : 0.86 - 1.5 m³



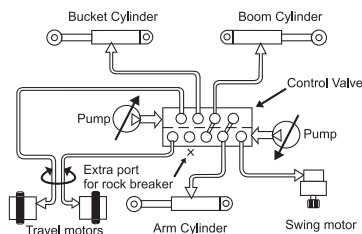
Superior Hydraulics

Powered by Hitachi's original Optimum Hydraulic System

Benefit: fast and smooth combined operations for higher performance.

Featuring:

- Cross sensing summation system
- Fuel saving pump system
- Original pilot circuit
- Boom and Arm regeneration, holding valves
- Spare spool for attachments
- Absolute type hydraulic filter



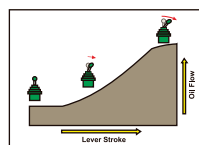
Boom & Arm Regeneration
resulting in energy saving



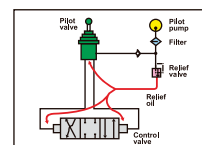
Reliable hydraulic aggregates



Absolute type hydraulic filter for complete hydraulic system protection against contamination



Oil flows in proportion to lever stroke. Load is minimum at neutral position saving fuel



Higher pressure circuit is actuated by a lower pressure pilot circuit reducing jerks on operator

Unparalleled Versatility

- EX200LC comes in various tailor made options and is easily customizable for use with multiple other attachments and accessories.
- EX200LC has options of factory fitted rock breaker piping kits with return line filter.



With factory fitted rock breaker piping kit as option



Rock Breakers: New Alicon Super+ Series

1. B215 Super+ (Secondary Breaking)
2. B235 Super+ (Primary Breaking)

Improved Durability

- Longer Piston & Damper
- Larger Through Bolt
- Modified Front Cover

Higher Performance

- Enhanced Productivity
- Larger Head Cap
- Larger Chisel & Front Head



Rock Breaker: GH Series

1. GH-9 (Secondary Breaking)
2. GH-10 (Primary Breaking)

Features

- Excellent power-to-weight ratio.
- High-impact energy providing greater productivity.
- Unique gas charged piston to give high impact energy with less recoil.
- Quick-change chisel replacement makes it easy to use & reduces down-time.
- Replaceable cylinder sleeve for easy and economical rebuild.
- Simple two-moving-parts designed for greater reliability.



APPLICATIONS



MINING & QUARRYING

- Primary Breaking
- Secondary Breaking



DEMOLITION & RENOVATION

- Masonry Structures
- Concrete Structures
- Composite Steel
- Pavements - Asphalt, Concrete



METALLURGICAL INDUSTRY

- Slag Recycling
- Cleaning & Debricking



CONSTRUCTION INDUSTRY

- Earthwork
- Trenching
- Ground excavation
- Tunneling
- Foundation work
- Building construction

Quick Coupler

Twin Lock Power Latch Quick Coupler Features

- Quick Couplers facilitate rapid change of bucket and attachments increasing the equipment utilization and productivity.
- Fully Automatic hydraulic coupler with unique Automatic Blocking System (ABS) eliminates the need for a manually inserted safety pin.
- Twin-locking feature enables front and rear attachment pins mechanically locked, in the event of any hydraulic power loss.
- Strong, durable, high-tensile precision single piece cast steel frame.
- ▶ Attachments can only be removed in a safe, fully crowd-in position.
- ▶ Short Payback period of less than six months.



Other Range of Attachments

Multiple Attachments, Unlimited Possibilities



Clamshell



Orange Peel Grab



Rotating Crusher



Magnet



Shear



Power Optimization ►

- Powered by reliable and fuel efficient Cummins 6BT5.9C engine.
- Auto Idle and Auto Deceleration (Original Tata Hitachi technology)
- Stepper motor based precise engine speed control; Dial type throttle
- Mode selection feature [EP mode, HP mode] Default EP mode – engine starts in EP mode only, reducing fuel consumption and protecting the engine.

- Engine efficiency improvement for lower fuel consumption



Fuel efficient engine



Dial type throttle

Efficiency Boosters ►

- Most comfortable heavy duty suspension seat in its class with dual tone fabric
- Ergonomic roomy cabin with single radius A Pillar and handrail
- New and improved audio player (USB+ FM)
- Heat reflective coating on cabin top
- Engine hot air draft redirection
- New premium upholstered interiors
- New hinged sleek honeycomb mesh ROC door with lock
- New honeycomb mesh pump side door

- Cyclonic type pre-cleaner
- Aluminum ROC for better cooling
- Reduced engine hood height for superior visibility
- Upgraded monitor, ergonomic hand grips and controls
- Hydra-mounts for cab mounting
- Battery relay protection cover
- InSite enabled (Insights into your job site)
- 2 extra cab lights & Front guard as standard



Improved serviceability



Spacious and comfortable working space with well laid out controls



Hinged ROC door



Easy to service



Cabin top heat reflective coating



Premium interior upholstery



Cyclonic type pre-cleaner



New premium audio player (USB + FM)

inSite

INSIGHTS INTO YOUR JOB SITE

✦ Insite helps you with



Location,
Geo Fencing



Overall Fleet Summary
in Graphical Widgets
(Dashboard)



Fuel Levels



Asset Utilization



Fleet Management



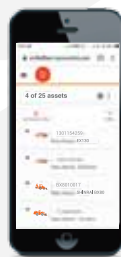
Asset Operation



Ability to Track the
Machine Maintenance/
Service Due Date

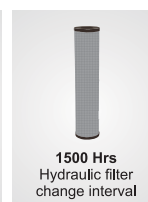
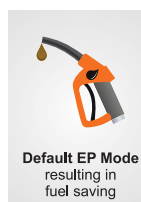


**BE IN SYNC WITH
YOUR MACHINES**



✦ Return on Investment ►

- Highest resale value
- Lower operating cost
- Best in class fuel efficiency
- Wide spread dealer network for easy availability of spare parts
- Field diagnostic vehicle for quicker after sales support
- Peace of mind through extended warranty
- Extended service intervals for reduced maintenance cost:
 - Hydraulic oil change: 3000 Hours
 - Hydraulic filter change: 1500 hours



SPECIFICATIONS

ENGINE

Model.....Cummins 6BT5-9C
 Type.....6 cylinder in-line water cooled
 Rated fly wheel power.....133 PS @ 2000 rpm
 Max.torque.....54.8 kgf-m @ 1300 rpm
 Batteries.....2 X 12 V

HYDRAULIC SYSTEM

Main pumps.....2 variable displacements axial piston pumps
 Max. oil flow.....2 X 221 lpm
 Pilot pump.....1 gear pump
 Max. oil flow.....20 lpm

SUPERSTRUCTURE

Swing speed.....13.7 rpm

RELIEF VALVE SETTINGS

Implement circuit.....285 kgf/cm²
 Swing circuit.....260 kgf/cm²
 Travel circuit.....350 kgf/cm²
 Pilot circuit.....40 kgf/cm²

UNDERCARRIAGE

Travel speeds.....0-4.2 kmph
 Max.traction force EX200LC.....15,300 kgf
 Gradeability.....35° (70% continuous)
 No.of upper rollers.....2
 No. of lower rollers.....8
 No. of track shoes.....52
 Shoe width EX200LC.....500 mm

SERVICE REFILL CAPACITIES

Hydraulic tank.....129.0 ltr
 Hydraulic system.....220.0 ltr
 Fuel tank.....310.0 ltr
 Engine coolant.....35.0 ltr
 Engine oil (Sump).....14.0 ltr
 Swing device.....6.7 ltr
 Travel device (Each side).....6.8 ltr

WEIGHTS AND GROUND PRESSURE

Machine	Operating weight	Ground pressure
EX200LC Backhoe	20,100 kg	0.52 kgf /cm ²

DIGGING FORCES

BACKHOE

Bucket digging forces.....11000 kgf

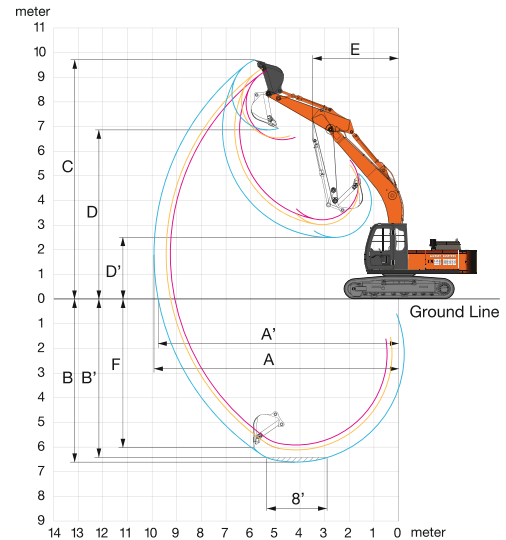
Arm length	1.90 m	2.22 m	2.90 m
Arm digging force	12500 kgf	11300 kgf	8800 kgf

BUCKETS

BACKHOE

Capacity	Width without side cutter	Weight (approx.)	Tooth points
0.86 m ³	997 mm	940 kg	4
0.91 m ³	1150 mm	741 kg	5
1.20 m ³	1450 mm	690 kg	-
1.5 m ³	1780 mm	567 kg	-

BACKHOE ATTACHMENT

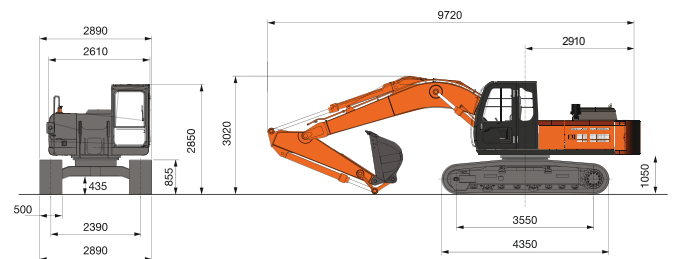


WORKING RANGES

BACKHOE

	Boom length	5680		
	Arm length	1900	2220	2900
A	Max. digging reach	9110	9250	9910
A'	Max. digging reach (on ground)	8920	9060	9740
B	Max. digging depth	5580	5910	6600
B'	Max. digging depth (8' level)	5340	5670	6420
C	Max. cutting height	9340	8990	9400
D	Max. dumping height	6480	6230	6610
E	Min. swing radius	4010	3720	3660
F	Max.vertical wall depth	4950	5050	5980

DIMENSIONS



All dimensions are in mm

These specifications are subject to change without prior notice. The machine depicted may vary from the actual machine. Please contact our nearest office for latest specifications. Accessories shown here are not part of the standard equipment. Performance of the machine may vary with site and operating conditions encountered.



Tata Hitachi Construction Machinery Company Private Limited

Registered Office: Jubilee Building, 45 Museum Road, Bangalore, India 560025

Telephone: +91 80 6695 3301 / 02 / 03 / 04 / 05 | Toll Free : 1800 121 6633

Email: info@tatahitachi.co.in | Website: www.tatahitachi.co.in | [f](#) [in](#) [@](#) [v](#)

These specifications are subject to change without prior notice. The machine depicted may vary from the actual machine. Please contact our nearest office for latest specifications. Accessories shown here are not part of the standard equipment. Performance of the machine may vary with site and operating conditions encountered.

Authorised Dealership