

EXPERIENCE THE POWER OF



EX130
Super 
SERIES

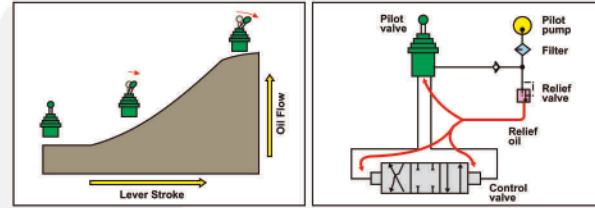
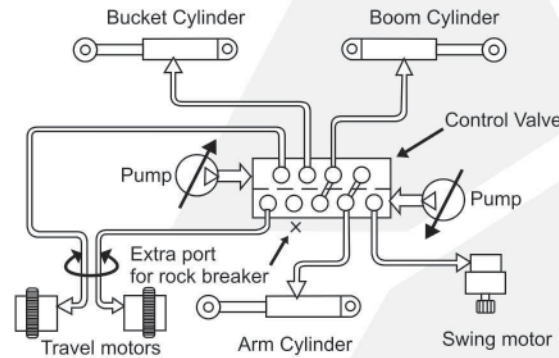
Model	: EX130
Engine Power	: 76 PS @ 2200 rpm
Operating Weight	
Backhoe	: 11,800-12,146 kg
Shovel	: 11,800 kg
Bucket Capacity	
Backhoe	: 0.23 - 0.60 m ³
Shovel	: 0.60 m ³



Superior Hydraulics

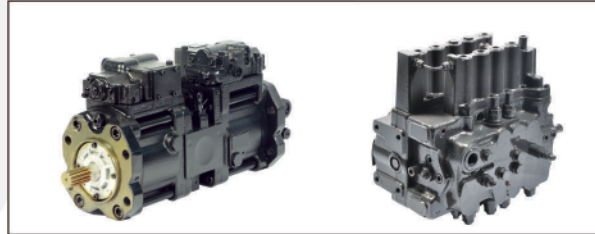
Hitachi's original Optimum Hydraulic System – Benefit: fast and smooth combined operations for higher performance. It features:

- ✦ Cross sensing summation system
- ✦ Fuel saving pump system
- ✦ Original pilot circuit
- ✦ Spare spool for attachments
- ✦ Absolute type hydraulic filter



Oil flows in proportion to lever stroke. Load is minimum at neutral position saving fuel

Higher pressure circuit is actuated by a lower pressure pilot circuit reducing jerks on operator



Reliable hydraulic aggregates

Unparalleled Versatility

- ✦ EX130 comes in various tailor made options and is easily customizable for use with multiple other attachments and accessories
- ✦ EX130 is the only excavator in its class to come in a shovel version, suitable for tunnel / loading applications
- ✦ EX130 has options of factory fitted rock breaker piping kits with return line filter



Alicon rock breaker



Shovel



Rock breaker piping kit

Power Optimization

- ✦ Powered by reliable and fuel efficient Tata 697 NA engine
- ✦ Auto Idle and Auto Deceleration (Original Tata Hitachi technology)
- ✦ Dial type throttle; Stepper motor for precise engine control
- ✦ Mode selection feature [EP mode, HP mode]

- ✦ Default EP mode – engine starts in EP mode only reducing fuel consumption and protecting the engine
- ✦ High fuel efficiency



Fuel efficient engine



Dial type throttle

Efficiency Boosters

- ✦ Most comfortable heavy duty suspension seat in its class with dual tone fabric
- ✦ Ergonomic roomy cabin with single radius A Pillar and handrail
- ✦ New and improved audio player (USB+ FM)
- ✦ Heat reflective coating on cabin top
- ✦ New premium upholstered interiors
- ✦ Sleek honeycomb mesh side doors for better airflow
- ✦ Cyclonic air pre-cleaner protects engine from dust
- ✦ Upgraded monitor, ergonomic hand grips and controls
- ✦ Hydra-mounts for cab mounting
- ✦ InSite enabled (Insights into your job site)
- ✦ Two additional cab lights
- ✦ Cabin front guard (Optional)
- ✦ Track guards (Optional)



Improved serviceability



Spacious and comfortable working space with well laid out controls

inSite
INSIGHTS INTO YOUR JOB SITE



Honeycomb mesh type ROC door



Ground level service access



Heat reflective coating on cabin top



Premium heat insulating interior upholstery



Cyclonic type air pre-cleaner



New premium audio player (USB + FM)

Return on Investment

- ✦ High resale value
- ✦ Low operating cost
- ✦ Best in class fuel efficiency
- ✦ Wide spread dealer network for easy availability of spare parts
- ✦ Field diagnostic vehicle for quicker after sales support
- ✦ Peace of mind through extended warranty*
- ✦ Extended service intervals for reduced maintenance cost
 - Hydraulic oil change: 3000 hours
 - Hydraulic filter change: 1000 hours



Default EP Mode resulting in fuel saving



3000 Hrs Hydraulic oil change interval



1000 Hrs Hydraulic filter change interval



2 years or 5000 hours whichever is earlier*



Field service vehicle

Super
SERIES



Maintenance intervals mentioned are for bucket operation only and subject to use of genuine and recommended grade of spares for the interval. It is also subject to contamination levels being within limits to be established from time to time.

*Conditions apply

SPECIFICATIONS

ENGINE

Model.....TATA 697 NA
 Type.....Water cooled, 6-cylinder in-line diesel engine
 Engine power.....76 PS @ 2200 rpm
 Max.torque.....25.4 Kgf-m @ 2000 rpm
 Batteries.....2 X 12V

HYDRAULIC SYSTEM

Main pumps.....2 variable displacement axial piston pumps
 Flow rate.....2 X 115 lpm
 Pilot pump.....1 gear pump
 Flow rate.....23 lpm

SUPERSTRUCTURE

Swing speed.....11.8 rpm

RELIEF VALVE SETTINGS

Implement circuit.....285 kgf/cm²
 Swing circuit.....285 kgf/cm²
 Travel circuit.....355 kgf/cm²
 Pilot circuit.....40 kgf/cm²

UNDERCARRIAGE

Travel speed0 - 4.3 kmph
 Max.traction force.....7500 kgf
 Gradeability.....35° (70% continuous)
 No.of upper rollers (each side).....1
 No. of lower rollers (each side).....6
 No. of track shoes (each side).....41
 Shoe width.....500 mm

SERVICE REFILL CAPACITIES

Hydraulic tank.....72.0 ltr
 Hydraulic system.....126.0 ltr
 Fuel tank.....250.0 ltr
 Engine coolant.....24.0 ltr
 Engine oil.....17.0 ltr
 Swing device.....3.2 ltr
 Travel device (Each side).....3.5 ltr

WEIGHTS AND GROUND PRESSURE

Machine	Operating weight	Ground pressure
Backhoe	11800 kg	0.41 kgf /cm ²
Shovel	11800 kg	0.41 kgf /cm ²

DIGGING FORCE

BACKHOE

Bucket digging force7300 kgf
 Arm crowd force.....5400 kgf

SHOVEL

Max. breakout force.....7250 kgf
 Max. crowding force.....7800 kgf

BUCKETS

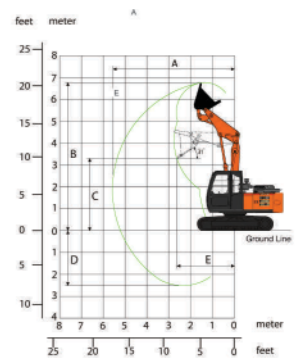
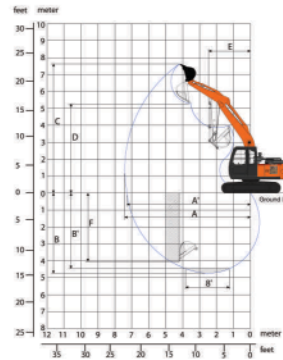
BACKHOE

Bucket type	Capacity (PCSA)	Width without side cutter	Weight	Tooth points
GP	0.60 m ³	1034 mm	478 kg	4
HD	0.52 m ³	930 mm	525 kg	4
Trench	0.23 m ³	490 mm	350 kg	2

SHOVEL

Capacity	Inner width	Outer width	Weight
0.6 m ³	1120 mm	1184 mm	552 kg

WORKING RANGES



BACKHOE

	Boom length	4250
	Arm length	1950
A	Max. digging reach	7410
A'	Max. digging reach (on ground)	7250
B	Max. digging depth	4720
B'	Max. digging depth (8' level)	4460
C	Max. cutting height	7630
D	Max. dumping height	5280
E	Min. swing radius	2460
F	Max. vertical wall	4040

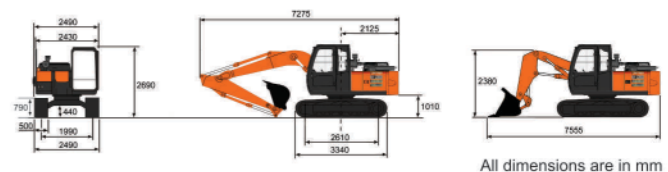
All dimensions are in mm

SHOVEL

	Boom length	2500
	Arm length	2000
A	Max. digging reach	5560
B	Max. cutting height	6750
C	Max. dumping height	3290
D	Max. digging depth	2520
E	Working radius at dumping height	2630

All dimensions are in mm

DIMENSIONS



All dimensions are in mm

The Specifications are subject to change without prior notice. The machine depicted may vary from the actual machine please contact our nearest office for latest specifications. Accessories shown here are not part of the standard equipment performance of the machine may vary with site and operating conditions encountered

Tata Hitachi Construction Machinery Company Private Limited

Registered Office : Jubilee Building 45 Museum Road Bangalore 560 025 India
 Telephone : +91 80 66953301 02 03 04 05 Fax : +91 80 66953309/25325792
 E-mail : info@tatahitachi.co.in Website : www.tatahitachi.co.in

Toll Free Number : 1800 121 6633

Authorised Dealer