



TATA HITACHI

Reliable solutions

P R O F I L E



A B O U T U S

59+ years in India
(Since 1961)

A JV between Tata
Motors(40%) and Hitachi
Construction Machinery
Co. Ltd, Japan(60%)

Providing Equipment &
Services for
Infrastructure & Mining
Sectors

TATA
MOTORS

40%

HITACHI CONSTRUCTION
MACHINERY

60%

TATA HITACHI



TATA HITACHI

Our Legacy

Tata Hitachi Construction Machinery



TATA

“LEADERSHIP WITH TRUST”
A Distinct value system and ethics

HITACHI

“RELIABLE SOLUTIONS”
Japanese quality and
technological prowess



Mission & Vision



MISSION

Be the preferred partner for providing reliable solutions for mining and infrastructure sectors

While dominating the domestic market, we will become a global manufacturing and development hub

Our hallmark shall be our motivated people, customer-centric culture, superior technologies, and strong partnerships, all working safely in unison with environment and society.

VISION

Reliable Solutions for building a greater tomorrow.





Our Journey

59+ years in the CE industry 1961-2020
35+ years of Tata-Hitachi partnership

Evolution of Company



1961
Construction
Equipment
Division started



1984
Collaboration
with HCM



1994
CEBU - Construction
Equipment
Business Unit
formed

1998
Manufacturing
facility in
Dharwad



1999
Telcon is born

2000

Tata Motors &
HCM sign JV for
80:20 stake in Telcon



2005
Tata Motors &
HCM sign a new
JV Agreement
for 60:40 stake

2009

New
Manufacturing
facility started in
Kharagpur



2010
Tata Motors &
HCM sign
New
JV Agreement
for 40:60 stake



2012
Name
changed to
Tata Hitachi



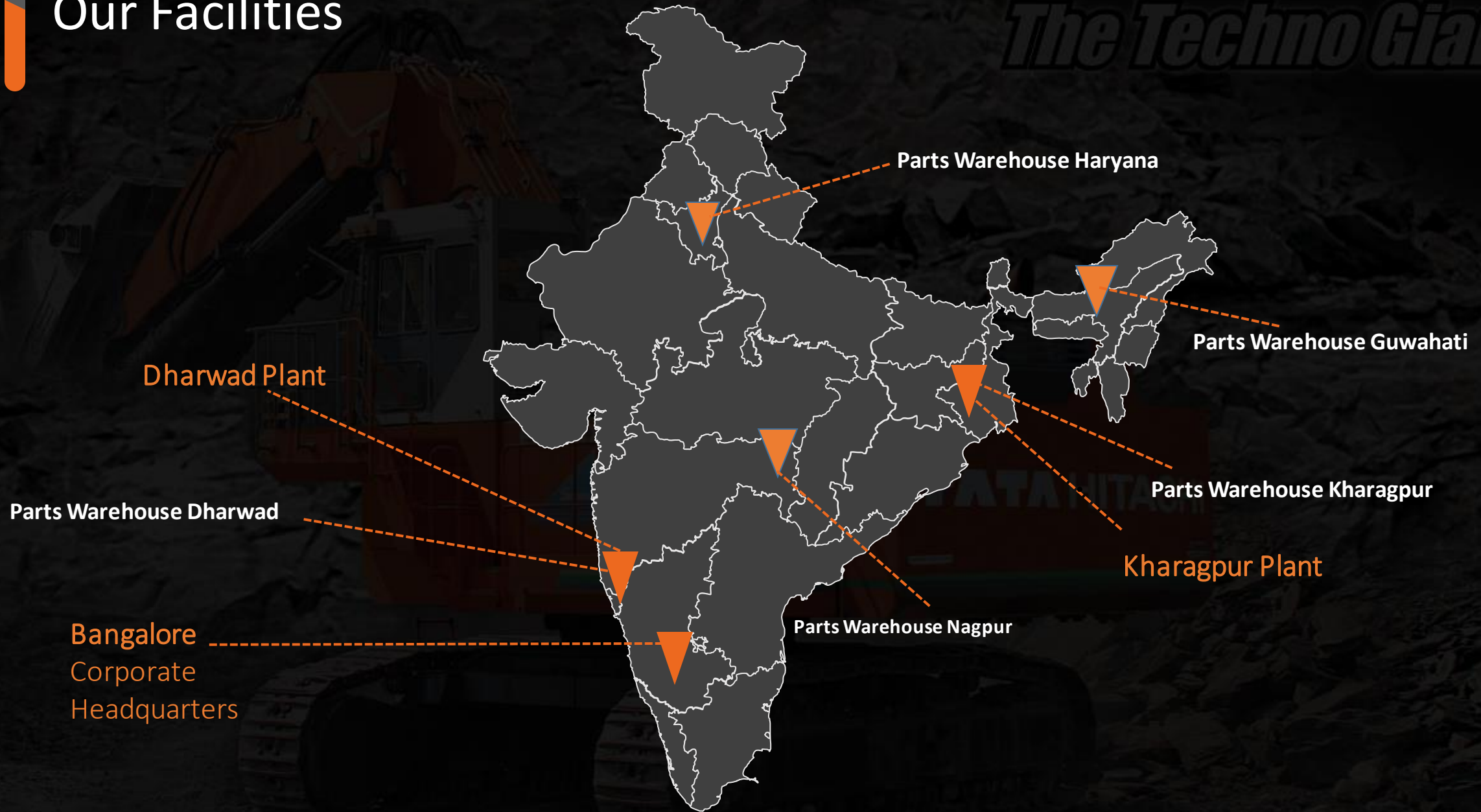
2018
Launch of Tata Hitachi Shinrai
Tata Hitachi Reman Center and
Used Equipment Business
launched

Time



Our Facilities

The Techno Giant



Our Network



Unmatched Support Network

Regional Offices: 6

Branch Offices: 28

Parts Main Warehouse: Nagpur

Other Parts Warehouses : Dharwad , Kharagpur and Faridabad


Large Network of Dealers

Dealers :

Domestic : 44

International : 2

Touch Points : 235

A large orange Tata Hitachi excavator is the central focus, positioned in a tropical environment with palm trees and a yellow bus in the background. The scene is dimly lit, with a dark overlay. The excavator's arm and bucket are visible, and the brand name 'TATA HITACHI' is printed on its side.

TATA HITACHI

O U R P R O D U C T S

Equipment Applications

CONSTRUCTION



Building Foundations



Urban Infrastructure



Irrigation Canals

MINING



Stone Quarrying



Granite Mining



Coal Mining



Construction





Construction

Urban Infrastructure

Helping build
India's cities.





Construction

Versatile & Tough

Range of Excavator
Loaders to address
every customer
need.





Construction

Irrigation Canals

Helping contractors
across the country
in meeting
deadlines.



Mining

Quarry Marvels

Machines designed
for tough
applications like
blue metal
quarrying.



Mining

Granite Mining

Machines designed
to excel in tough
applications like
Granite mining.



Mining

OB Removal

Machines designed
for high
productivity in
applications like OB
removal.



Mining

Coal Mining

Helping meet the
nations demand for
power generation
in coal mines.



Customization

Super Long Reach

Ability to customize
products for
addressing specific
customer needs.





Attachments and Customized Applications

Tata Hitachi offers customized attachments to address specific customer needs.

**GET THE MOST OUT OF YOUR MACHINES
WITH OUR WIDE RANGE OF ATTACHMENTS.**



*Alicon Super+ Series
Rock Breaker*



*GH Series
Rock Breaker*



Auger



Super Long Front



Quick Coupler



Clamshell Bucket



Orange Peel Grab



Rotating Crusher



Magnet

The launch of the all new backhoe loader



The launch of the new Super+ series of hydraulic excavators



Customer Support

Commissioning

- PDI
- 0-100 Hours Service
- Training (operator / mechanic)

Warranty

- 0-2000 Hrs
- 6 visits
- Warranty Closing Service

“Life Cycle Support”

Full Maintenance Contract

Overhaul

- Structures
- Hydraulics
- Engine

Post-Warranty

- Annual Maintenance Contract
- Annual Service Contract
- Site Support Agreement



Value Added Services

**SOLUTIONS SHOULD ADVISE.
NOT JUST REPORT.**

ConSite

-  MONTHLY REPORT VIA E-MAIL
-  EMERGENCY ALARM
-  CAUTION ALARM
-  PERFORMANCE ANALYSIS
-  SITE EFFICIENCY PARAMETERS



Download the ConSite Pocket App from Google Play store & Apple store.



Available on **ZAXIS-GI series**

inSite
INSIGHTS INTO YOUR JOB SITE


BE IN SYNC WITH YOUR MACHINES



*SMS services to stay updated



Available on **EX Super + series, SHINRAI & TL340H**

A dark, atmospheric photograph of a red Tata Hitachi excavator in a tropical setting. The excavator's arm is raised, and the brand name 'TATA HITACHI' is visible on its side. In the background, there are palm trees, a yellow bus, and distant mountains. The overall tone is professional and industrial.

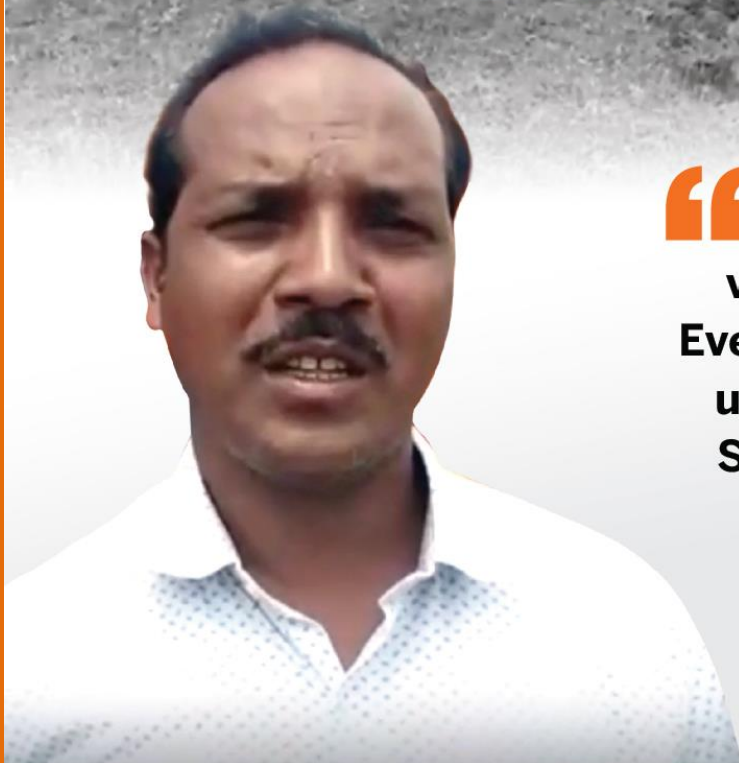
TATA HITACHI

V O I C E O F O U R C U S T O M E R S



TATA HITACHI SHINRAI

• RELIABLE • TRUSTWORTHY • CAPABLE



“ Tata Hitachi Shinrai has very good loading capacity. Even at 1300- 1400 rpm it helps us to load the tippers faster. Shinrai is very fuel efficient, I’m very happy with the machine. ”

Bimbadhar Kumar Prusty
Paradeep, Orissa





TATA HITACHI

Reliable solutions

“We are extremely happy with the performance of Tata Hitachi’s machines”

R K Marbles is proud to own 55 Tata Hitachi machines – **Hydraulic excavators ZAXIS 210, ZAXIS 220, ZAXIS 370, ZAXIS 400, ZAXIS 450, ZAXIS 650 and EH 600 Dump Trucks**. These machines have been a part of our fleet from 2008 and have been working in marble mining applications in Rajasthan.

We are extremely happy with the performance of these machines, including fuel consumption and productivity. We are also highly satisfied with the service and spare parts support provided by Tata Hitachi. This has increased our confidence in the organization and we are now looking to increase our fleet size of Tata Hitachi machines.

We are proud of our relationship with Tata Hitachi and wish the organization every success going forward.



Mr. A. K. Shrimali
Executive President (Engg.)
R. K. Marble Pvt. Ltd.





TATA HITACHI

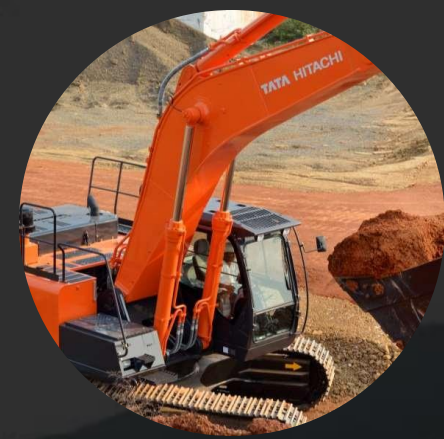
Reliable solutions

"We are proud owners of Tata Hitachi ZAXIS470H GI Series. We have been using the machine since March 2015 for Granite Mining Application in Lalitpur, Jhansi. We are highly satisfied with the performance of this machine. ZAXIS470H GI Series is highly productive, reliable and works under tough conditions.

We also appreciate the support and service rendered by the Tata Hitachi team".



Mr. Atul Sharma
Director, Peethambra Granites Pvt. Ltd.





TATA HITACHI

Reliable solutions

Mr. Jai Prakash Tak – Director,
Jai Construction - added three **ZAXIS370LCH GI Series**
machines to his fleet. He bought these machines in August
and September 2016. The machines are currently deployed
for irrigation projects in Telangana.

M/s. Jai Construction is one of Tata Hitachi's oldest and
loyal customers with an association dating back to 1991.
Their fleet includes over 40 machines from Tata Hitachi.
They are extremely satisfied with the performance &
durability of the machines.

Mr. Jai Prakash says,

"We highly recommend Tata Hitachi
machines and are extremely satisfied with
the service & parts provided by the
organization. We wish Tata Hitachi every
success in the future".



GI Series **ZAXIS 370_{LCH}**



Jai Prakash Tak
Mr. Jai Prakash Tak
Director, Jai Construction



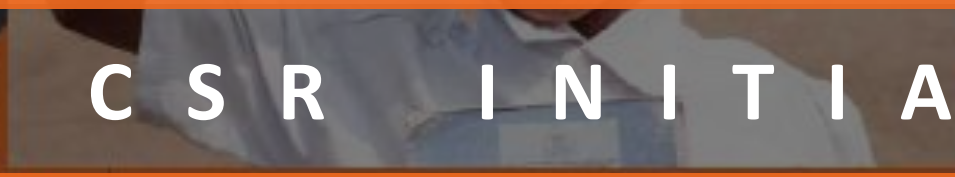


O U R

C S R

I N I T I A

T I V E S



LITERACY | HEALTH CARE | SOCIAL INFRASTRUCTURE | SKILL DEVELOPMENT | AFFIRMATIVE ACTION

Skill Development



- Our commitment to employability & skill development
- Two Operator Training Schools at Dharwad and Kharagpur
- Training on operation and maintenance of excavators and backhoe loaders





Accolades won



THE ROAD AHEAD

- Government focus continues in infrastructure
- Tata Hitachi continues its quest in supporting this infrastructure thrust.



A TATA Hitachi wheel loader is shown at night, dumping a large load of material from its bucket. The machine is orange and black, with "TATA" visible on the side. The background is dark, and the scene is illuminated by the machine's headlights and ambient light.

T H A N K Y O U

For more details visit: www.tatahitachi.co.in

