



**TATA HITACHI**

Reliable solutions

# COMPACT AND POWERPACKED



**ZA/IS33U**

28.8PS @ 2400rpm | 3270 - 3650 kg | 0.04 - 0.09 m<sup>3</sup>



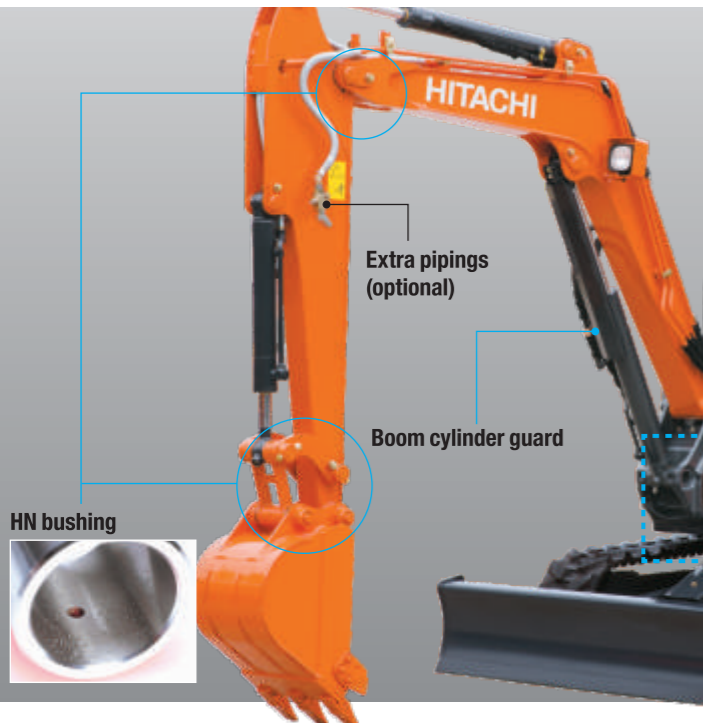
# OPERATOR COMFORT

Comfortable Operator Station to Yield High Production



# DURABILITY

Technological Prowess and Stringent Quality Control



# Strong Front Attachment

Front pins are joined with a tight fit to reduce jerk and noise significantly, thus enhancing durability. The pins are lubricated through HN bushings having an abundant grease-retaining capacity, extending greasing intervals.

Main hoses are sheathed with hose protectors at the swing post. The bottom side of the boom cylinder is protected with a V-shaped boom cylinder guard. The four-side reinforced arm is sturdy thereby for greater durability.

# Comfortable Operator Environment

Hitachi cabs and canopies are known for operator comfort. They are spacious with ample leg room.

The console and seat are designed ergonomically, to maximize operator comfort.

The operator station in designed to minimise fatigue

The foot step is lowered for easy access. A host of features like arm rests, drink holder and seat back box helps to enhance operator comfort.



Zero tail swing & boom swing feature enables this compact excavator to work alongside walls.

# Rugged Box-Section Blade

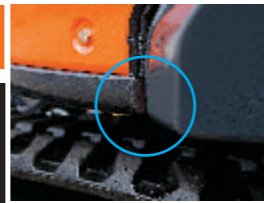
The blade is of box-section structure for higher ruggedness, and its stays have openings for easy flow-out of mud.



Box-section blade

# Sturdy Upperstructure

The upperstructure frame is reinforced with proven D-section skirts. The height is increased of the D-section to boost durability against obstacles.



D-section frame skirt

# SIMPLIFIED MAINTENANCE

## Ease of servicing



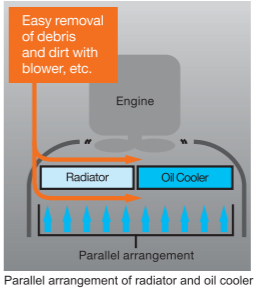
## Customised for Indian Operating Conditions with Zero Tail Swing

- Greater Stability
- Air Pre Cleaner
- Strengthened Front Attachments
- Strong Upper Structure
- Higher Digging Forces
- ROPS /FOPS Canopy
- Easy to Maintain
- Mechanical Governor (Minimal Electronics)

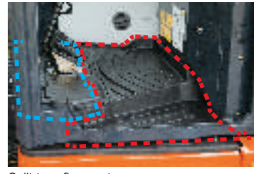
# Easy-to-Clean ROC

The radiator and oil cooler are arranged in parallel, instead of conventional in-line arrangement, to promote easy, efficient cleaning and cooling. Their wavy fins can be easily cleaned by blowing air.

Dust-proof indoor nets provide for easy removal of debris and dirt. The split-type floor mat can be easily removed and its surface patterns allow for quick sweeping.



Dust-proof indoor net (optional)

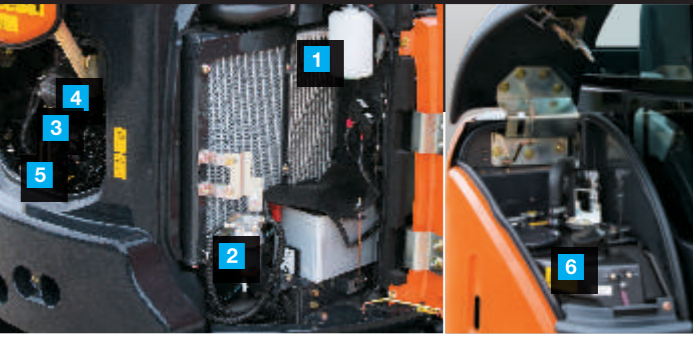


Split-type floor mat

# Open-Wide Covers for Easy Maintenance

All covers are wide-opening for direct access to service points, to improve serviceability. A cover adjacent to the radiator extends vertically for easy cleaning the radiator. The fuel refilling port is placed inside the cover to avoid dirt entry and fuel theft.

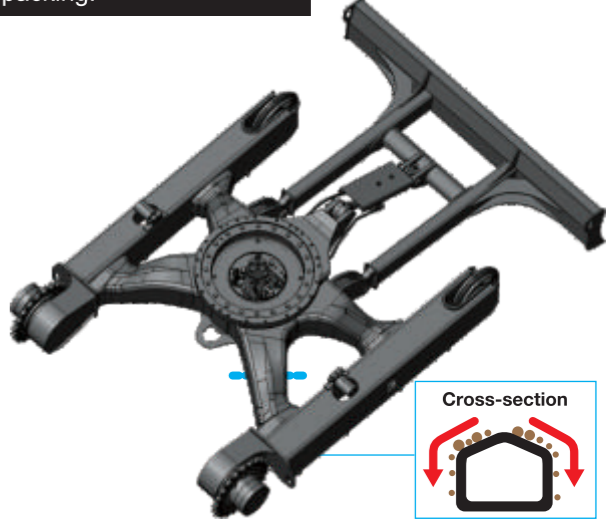
The new tank cover is lightweight and wide-opening for easy refueling.



- 1 Reserve tank
- 2 Water separator
- 3 Fuel filter
- 4 Air filter
- 5 Engine oil filter
- 6 Fuel tank

# Sloped Track Frame Tops for Easy Mud Removal

Track frame tops are sloped to let mud slide away, curbing mud packing.



Cross-section

## Engine

Model .....Yanmar EDM-3TNV88  
 Type .....4Cycle Water Cooled, direct injection  
 No. of cylinders .....3  
 Total Displacement.....1.642L  
 Rated Output PS(kW) ..... 28.8PS (21.2)  
 Max Torque .....105.5Nm(10.8kgfm) @1000rpm  
 Bore and Stroke .....88mm x 90mm

## Hydraulic System

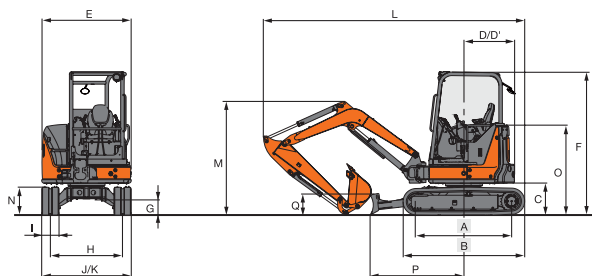
### Hydraulic Pumps

Main Pumps.....2 variable Displacement axial piston pumps  
 Maximum Oil Flow.....2 x 38.4L/min  
 .....1x22.8L/min  
 Pilot Pump .....1 gear pump  
 Maximum Oil Flow.....10.8L/min

### Rekef Valve Settings

Implement Circuit.....250 kgf/cm<sup>2</sup> (24.5MPa)  
 Swing Circuit .....170kgf/cm<sup>2</sup>(16.7Mpa)  
 Travel Circuit .....250kgf/cm<sup>2</sup>(24.5Mpa)  
 Pilot Circuit.....40kgf/cm<sup>2</sup>(3.9Mma)

## DIMENSIONS



Unit: mm

A Distance between tumblers	1670	K Overall width	1550
B Undercarriage length	2130	L Overall length	
C Counterweight clearance	540	With 1.17 m arm	4450
D Rear-end swing radius	775	With 1.52 m arm	4530
D' Rear-end length	775	M Overall height of boom	
E Overall width of upper structure	1550	With 1.17 m arm	1510
F Overall height of cab	2470	With 1.52 m arm	1950
G Min. ground clearance	270	N Track height	470
H Track gauge	1250	O Engine cover-height	1520
I Track shoe width	300	P Horizontal distance to blade	1620
J Undercarriage width	1550	Q Blade height	360

## Backhoe Attachments

Capacity	Width		Front End Attachment	
ISO Heaped	With side cutters	Without side cutters	1.17m Arm	1.52 m Arm
0.04 m <sup>3</sup>	293 mm	250mm	A	A
0.09 m <sup>3</sup>	543 mm	500 mm	A	A

A General Purpose B Light Excavation C Loading Work

## BUCKET AND ARM DIGGING FORCE

Arm length	1.17 m	1.52 m
Bucket digging force ISO	27.2 kN (2 770 kgf)	27.2 kN (2 770 kgf)
Arm crowd force ISO	16.9 kN (1 720 kgf)	14.6 kN (1 490 kgf)

## Upper Structure

Swing speed.....9.1min-1(rpm)  
 Swing torque .....5.1kNm(520kgfm)

## Under Carriages

### Number of rollers on each side

Upper rollers .....1  
 Lower rollers .....4

### Travel Device

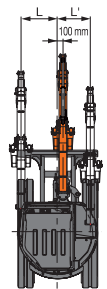
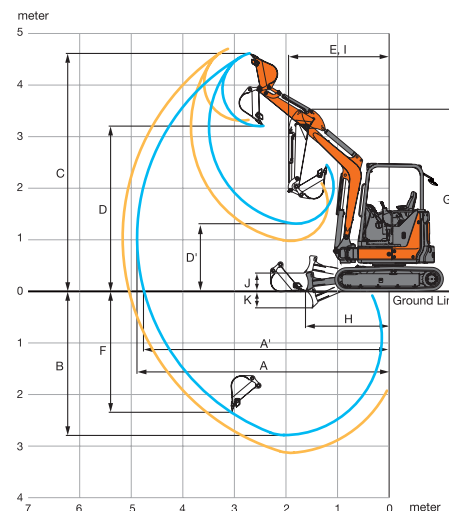
Travel speeds .....High : 0 to 4.3. km/h  
 .....Low : 0 to 2.8km/h

Maximum Traction Force.....27kN(2750kgf)  
 Grade ability .....58% (30 Degree) Continuous

## Service Refill Capacities

Fuel tank .....42.0L  
 Engine coolant .....3.9L  
 Engine oil .....7.2L  
 Travel device (each side).....0.6L  
 Hydraulic system.....56.0L  
 Hydraulic tank .....32.0L

## WORKING RANGES



Unit: mm

Arm length	1.17 m	1.52 m
A Max. digging reach	4 890	5 170
A' Max. digging reach on ground	4 750	5 040
B Max. digging depth	2 790	3 130
C Max. cutting height	4 620	4 470
D Max. dumping height	3 200	3 310
E Min. swing radius	1 970	2 090
F Max. vertical wall digging depth	2 330	2 530
G Front height at Min. swing radius	3 530	3 560
H Min. level crowding distance	1 610	1 480
I Working radius at Min. swing radius	1 580	1 860
J Blade bottom highest position above ground	360	360
K Blade bottom lowest position above ground	320	320
L/L' Offset distance	610 / 735	610 / 735

The Specifications are subject to change without prior notice. The Machine depicted may vary from the actual Machine Please contact our nearest office for latest specifications. Accessories shown here are not part of the standard equipment Performance of the machine may vary with site and operating conditions encountered

## Tata Hitachi Construction Machinery Company Private Limited

Registered Office : Jubilee Building 45 Museum Road Bangalore 560 025 India  
 Telephone : +91 80 66953301 02 03 04 05 Fax : +91 80 66953309/25325792  
 E-mail : info@tatahitachi.co.in Website : www.tatahitachi.co.in

Toll Free Number : 1800 121 6633

Authorised Dealer