



**TATA HITACHI**

Reliable solutions

# NOW WITH THE POWER OF GI



**ZAXIS 220<sub>LC</sub>**

170 PS / 2100 rpm | 21700 kg | 0.9 - 1.22 m<sup>3</sup>







## More Production with Less Fuel

- 10% Reduction in Fuel Consumption
- More Fuel Reduction in the ECO mode
- Swift Front Movements with HIOS\* III Hydraulics
- Powerful Lifting Operation
- Boosted Swing Torque
- Enhanced Power Boost
- Easy-to-Use Attachments



## Remote Fleet Management with Global e-Service

Global e-Service provides easy access to a machine on site, conveying operating information and log, including machine location, daily operating hours, fuel level, temperatures, pressures and likes.



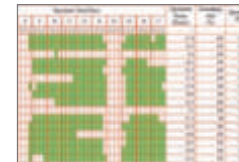
### Operation

- Working site of customer machine can be determined.
- Route to working site of customer machine can be determined also.

Machine ID	Machine Name	Machine Type	Machine Status	Machine Location	Machine Fuel Level	Machine Hour Meter	Machine Alarm
000001	000001	000001	000001	000001	000001	000001	000001
000002	000002	000002	000002	000002	000002	000002	000002
000003	000003	000003	000003	000003	000003	000003	000003
000004	000004	000004	000004	000004	000004	000004	000004
000005	000005	000005	000005	000005	000005	000005	000005
000006	000006	000006	000006	000006	000006	000006	000006
000007	000007	000007	000007	000007	000007	000007	000007
000008	000008	000008	000008	000008	000008	000008	000008
000009	000009	000009	000009	000009	000009	000009	000009
000010	000010	000010	000010	000010	000010	000010	000010

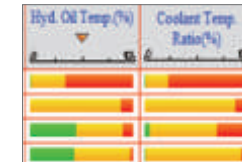
### Alarm function

Information of alarms as causes of machine failures can be received in real time.



### Hour meter / Daily report

Daily machine operation hours and remaining fuel can be determined.



### Operation information

Hydraulic oil temperature, swing hours and other data are determined.



## No Compromise on Operator Comfort

- Comfortable Operating Environment
- Comfort-Designed Operator Seat
- Robust Cab

The robust cab, meeting the OPG (Top Guard Level 1), protects the operator from falling objects. The pilot control shut-off lever is provided with a neutral engine start system that permits engine starting only when the pilot control shut-off lever is in Lock position.



Multifunction monitor



Ergonomic controls



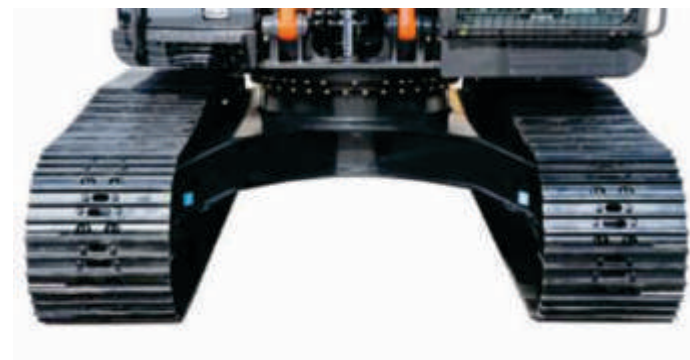
Rear Air-conditioner vents



## Rock-Solid, Durable Front Attachment

The boom top and foot are reinforced with thickened high-tensile steel brackets, which incorporate steel bushings to enhance durability. Arm cylinder and boom cylinders (rod extend ends) cushion shocks at stroke ends to cut noise and extend service life.

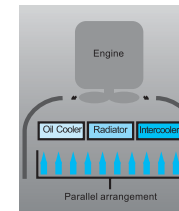
Joint pins at the front attachment are tightly fit to reduce jolt and sound. The arm-bucket joint is protected by WC thermal spraying on its contact surfaces to reduce wear and jolt. New-type steel bushings, utilized on joint pins, retain grease inside for longer greasing intervals. A reinforced resin thrust plate, mounted on the bucket pin, helps reduce wear and noise.



## Strengthened Undercarriage

The X-beam frame is made monolithically with fewer welds for higher rigidity and durability.

Track adjusters absorb impacts to crawlers. Front idlers and adjuster cylinders are integrated to increase durability. Idler brackets and travel motor brackets are both thickened for added durability.



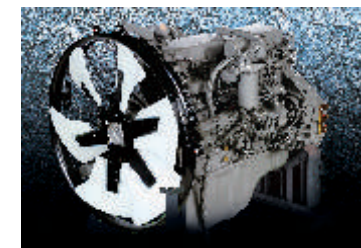
Parallel arrangement of ROC



Electric Fuel Refilling Pump

## Simplified Maintenance

Parallel arrangement of ROC, Dustproof indoor net, Grouped remote inspection points, Sloped side frame tops, Long service intervals & Electric fuel filling pump(optional) helps to simplify maintenance



## Durable, Reliable Engine

This engine has a track record showing impressive durability at countless tough job sites around the world.

The engine - associated with a rugged design, a direct fuel injection system and an elaborate governor - goes green, and complies with EU Stage II and US EPA Tier 2 emissions regulations.

The ample-capacity intercooler and turbocharger help yield a whopping 170 PS (125 kW) output for higher production in shorter job schedule.

