



TATA HITACHI

Reliable solutions

THE MINI MASTER



ZAXIS20U

17.7PS @ 2200rpm | 2305 kg | 0.07 m³



Compact Form

Excellent workability

The new ZAXIS 20U-5A hydraulic excavator comes with features which enable the machine to reach hard access areas easily and to work in extremely constrained spaces.

- Compact form factor (Track-width of 1450mm)
- Zero Tail-swing feature
- Boom swing feature

The compact and versatile machine can be transported easily and efficiently on small carrier pickup vehicles.



4

Excellent Performance

Advanced features

Hitachi's advanced hydraulic technology powers the ZAXIS 20U-5A taking the performance of the machine to benchmark levels.

- Advanced hydraulics
- Smooth pilot type levers for all operations
- New wrist control lever
- Convenient pedal for shifting second speed



Operator Comfort

Advanced feature

ZAXIS 20U-5A is designed to give a comfortable operating environment to the operator. Be it the comfortable seating or the ergonomic positioning of controls, ZAXIS 20U-5A eliminates fatigue and makes working more comfortable.

- Low noise engine
- Comfortable seating
- Ergonomically designed operator space
- Easy access to cabin



Assembly Line



Low noise engine



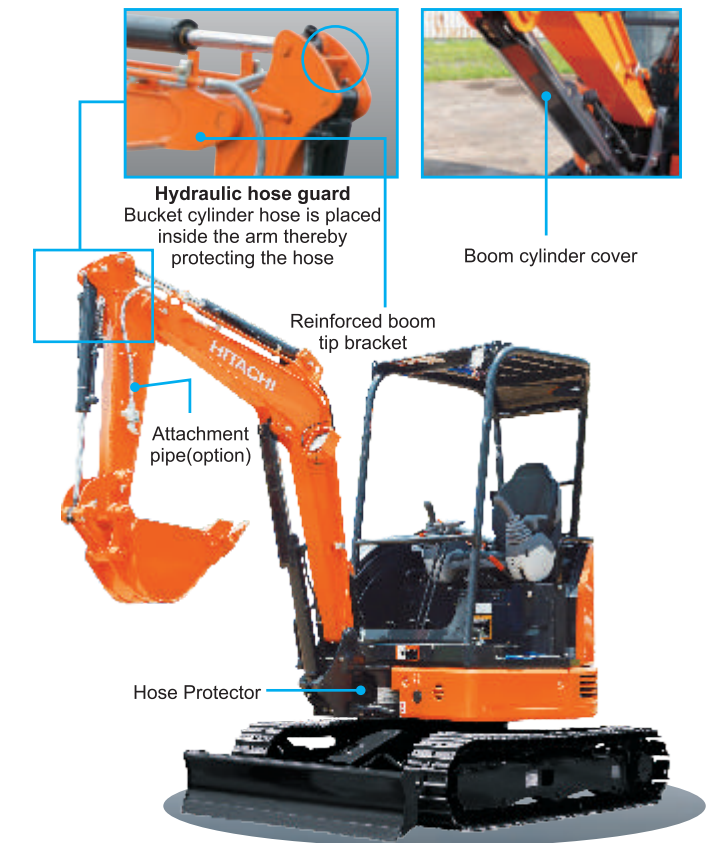
Robotic frame welding line

Quality and Durability

User friendly mini excavator

Durability is built into the design of ZAXIS20U. The specially designed arm end houses the bucket cylinder hoses for protection.

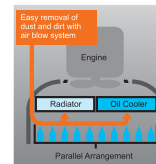
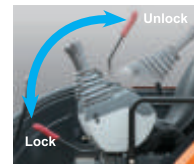
- Strong front-end attachment
- Sturdy bucket
- Boom cylinder cover
- Hydraulic hose protectors and guards



Safety Protection for Operator

Thoughtful features have been provided in the ZAXIS 20U-5A, aimed at providing safer working environment for operators.

- 4 pillar canopy with ROPS / TOPS / OPG (Top guard level 1)
- Lock lever compulsory for engine start
- Convenient foot step for climbing



Easy to Maintain

User friendly mini excavator

Wide opening covers and grouped inspection points helps reduce strain on the operators and improves machine maintenance.

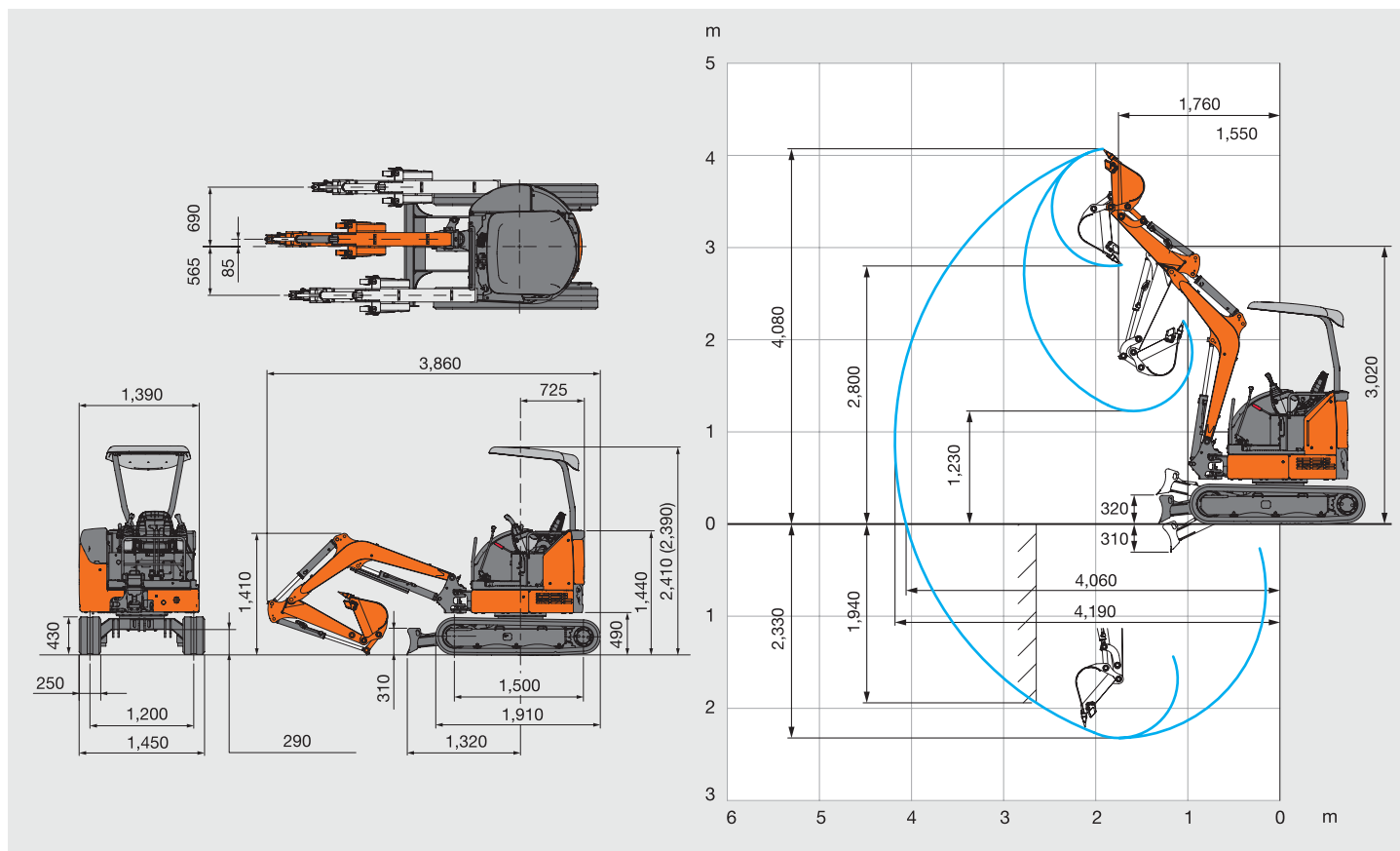
- Wide open covers with dust guard
- Ground level servicing of all major filters
- Parallel ROC helps in better coiling efficiency
- Vertical engine cover helps in carrying out maintenance in constrained space
- Easy access to engine from rear and top



Model		ZX20U-5A
Operating Weight	Kg	2305 (Four-Post Canopy)
Machine Body Weight	Kg	1460
Standard Bucket	M3	0.07
Performance		
Swing Speed	Min-1 (rpm)	9.2
Travel Speed	Km/h	4.4 / 2.6
Grade-ability	%	47% (25°)
Maximum cutting force	kN (kgf)	18.6 (1900)
Engine		
Model		3TNV76
Make		Yanmar
Type		4 Cycle, water cooled, 3 cylinder swirl-chamber type
Rated Power	W/min-1 (PS/rpm)	13.0 / 2200 (17.7/2200)
Displacement	CC	1115
Hydraulic System		
Hydraulic Pump		2 Variable displacement axial piston pumps, 1 gear pump (for operation)
Main Relief Valve implement circuit	Mpa (kgf/cm ²)	20.6 (210)
Swing Motor		Fixed displacement axial piston motor
Travel Motor		Variable displacement axial piston motor
Front		
Boom Swing Angle	Degree	Left 70° / Right 60°
Undercarriage		
Standard Shoe width	mm	250
Crawler total width and blade width	mm	1450
Oil Capacities		
Fuel Tank	L	34
Hydraulic Oil Tank	L	19.0
Hydraulic System	L	30.0

Dimensions / Working Ranges

mm



The Specifications are subject to change without prior notice. The Machine depicted may vary from the actual Machine Please contact our nearest office for latest specifications. Accessories shown here are not part of the standard equipment Performance of the machine may vary with site and operating conditions encountered

Tata Hitachi Construction Machinery Company Private Limited

Registered Office : Jubilee Building 45 Museum Road Bangalore 560 025 India
 Telephone : +91 80 66953301 02 03 04 05 Fax : +91 80 66953309/25325792
 E-mail : info@tatahitachi.co.in Website : www.tatahitachi.co.in

Toll Free Number : 1800 121 6633

Authorised Dealer