



**TATA HITACHI**

Reliable solutions

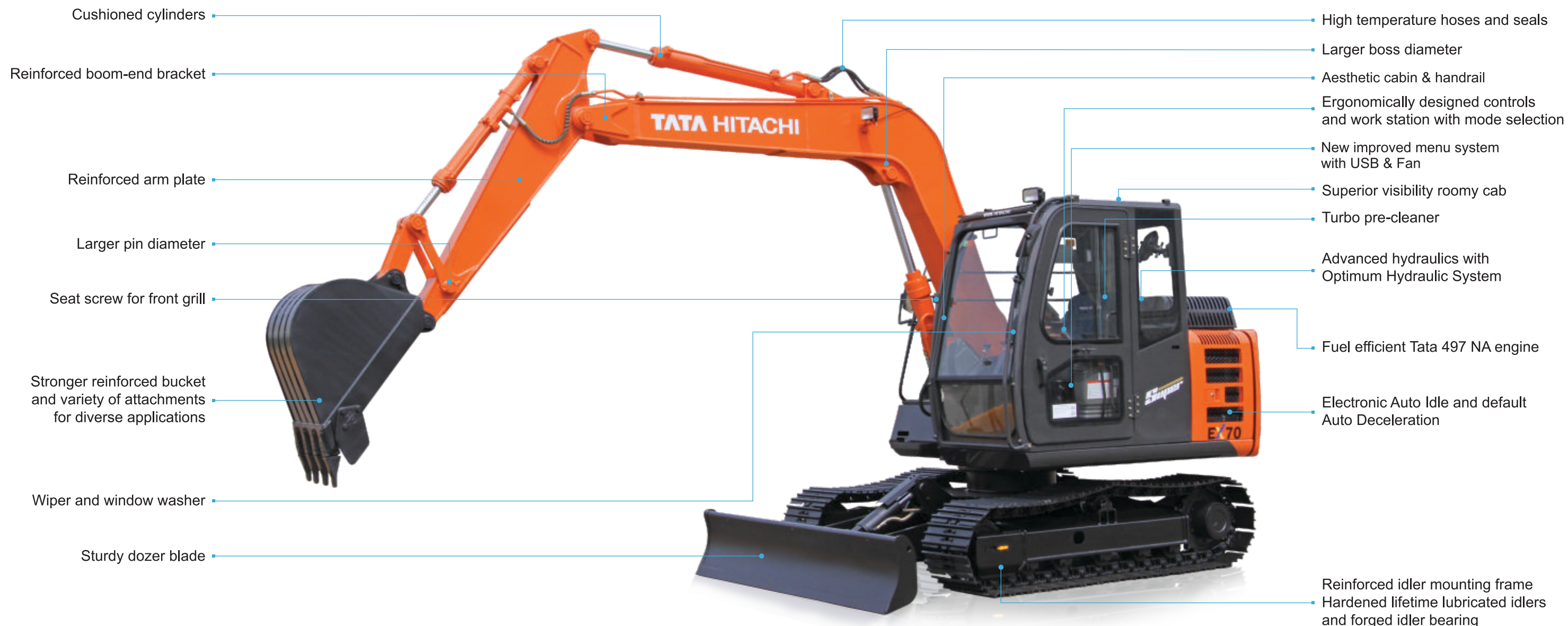
# THE SUPER ADVANTAGE



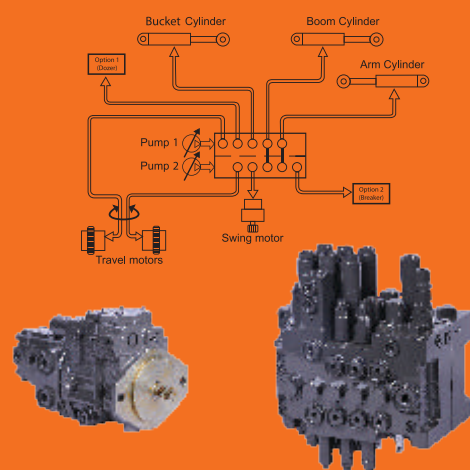
**EX70**

55PS @ 2000rpm | 7,000 kg | 0.10 - 0.30 m<sup>3</sup>





## SUPERIOR HYDRAULICS



Hitachi's **Optimum Hydraulic System** allows for easy, smooth and swift combined operations which translate into a superior machine performance.

Advanced features such as the **Fuel Saving Pump System** enables superior performance in inching operations thereby eliminating losses.

Hitachi's original pilot circuit, with shockless-regulator, features responsive and precise control.

## UNPARALLELED VERSATILITY



The EX70 Super, a result of Hitachi's world class design and R&D capability displays unparalleled versatility in its compatibility with a wide range of attachments tailor made to match the Indian operating conditions.

**A Spare Spool** for special attachments is supplied as a part of standard equipment.

- Standard Variant
- H Variant

## POWER OPTIMIZATION



EX70 Super is powered by reliable & fuel efficient Tata 497 NA engine delivering 55 PS @ 2000 rpm.

**Power Mode:** selection feature makes optimum use of the engine power by sensing the changes in the engine speed that occur with each new load.

**Auto Idle & Auto Deceleration:** features provide an increased saving in fuel, thereby lowering operational costs.

**EP Mode:** Reduced engine speed for light duty operation for fuel savings, without compromising on production.

**HP Mode:** Higher engine power to increase productivity for quicker completion of job.



## EFFICIENCY BOOSTERS



- Ergonomically designed roomy cabin with superior visibility
- Reduced engine hood height
- Improved aesthetics
- Hydramounts for cab mounting
- Ergonomically designed operator seat with weight adjustment
- New control levers and display monitor
- FM, USB enabled media player with speakers
- Fan and LED light in cabin
- Mobile charger port
- Dial type throttle control

## RETURN ON INVESTMENT



EX70 Super with an installed base of approximately 10,000 machines working in a wide variety of applications in various geographies across India, has been commanding the **highest resale value in its class.**

Auto Idle, Auto Deceleration and Mode Selection result in fuel saving thereby lowering operational costs.

2500 hrs hydraulic oil change interval reduces the operating cost of the EX70 Super.

The superior design of EX70 Super ensures ease in serviceability thereby leading to minimal downtime for maintenance resulting in higher profits for customers.



# SPECIFICATIONS

## ENGINE

Model.....TATA 497 NA  
 Type.....Water cooled, 4 cylinder in-line diesel engine  
 Rated fly wheel power.....55 PS @ 2000 rpm  
 Max.torque.....19 Kgf-m @ 1400 rpm  
 Batteries.....2x12 V

## HYDRAULIC SYSTEM

Main pumps.....2 variable displacements axial piston pumps  
 Flow rate.....2 X 60 lpm  
 Pilot pump.....1 gear pump  
 Flow rate.....19.5 lpm

## SUPERSTRUCTURE

Swing speed.....12.8 rpm

## RELIEF VALVE SETTINGS

Implement circuit.....265 kgf/cm<sup>2</sup>  
 Swing circuit.....235 kgf/cm<sup>2</sup>  
 Travel circuit.....280 kgf/cm<sup>2</sup>  
 Pilot circuit.....35 kgf/cm<sup>2</sup>

## UNDERCARRIAGE

Travel Speed .....0.25-5.0 kmph  
 No.of upper rollers.....1x2  
 No. of lower rollers.....5x2  
 No. of track shoes.....37x2  
 Shoe width.....450 mm

## SERVICE REFILL CAPACITIES

Hydraulic tank.....42.0 ltr  
 Hydraulic system.....92.0 ltr  
 Fuel tank.....135.0 ltr  
 Engine coolant.....15.5 ltr  
 Engine oil.....10.0 ltr  
 Travel device (Each side).....3.0 ltr

## WEIGHTS AND GROUND PRESSURE

Machine	Operating weight	Ground pressure
Backhoe with Dozer Blade	7000 kg	0.34 kgf /cm <sup>2</sup>
Backhoe without Dozer Blade	6500 kg	0.32 kgf /cm <sup>2</sup>

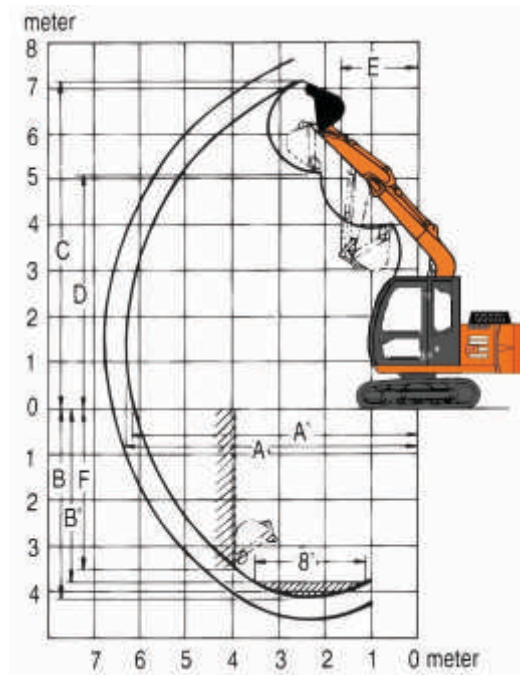
## DIGGING FORCES

Bucket digging force.....4800 kgf  
 Arm crowd force.....3700 kgf

## BUCKETS

Capacity	Width with side cutter	Width without side cutter	Weight	Tooth points	Type
0.30 m <sup>3</sup>	750 mm	660 mm	229 kg	4	GP
0.35 m <sup>3</sup>	860 mm	770 mm	230 kg	4	Wider GP
0.25 m <sup>3</sup>	-	570 mm	208 kg	3	HD
0.10 m <sup>3</sup>	-	360 mm	167 kg	2	Narrow

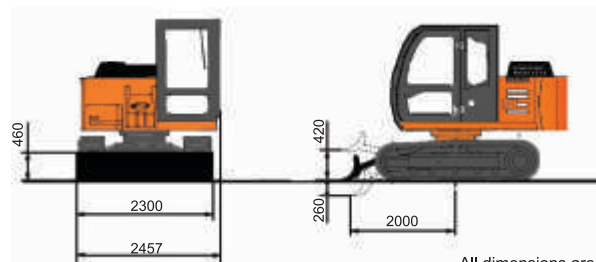
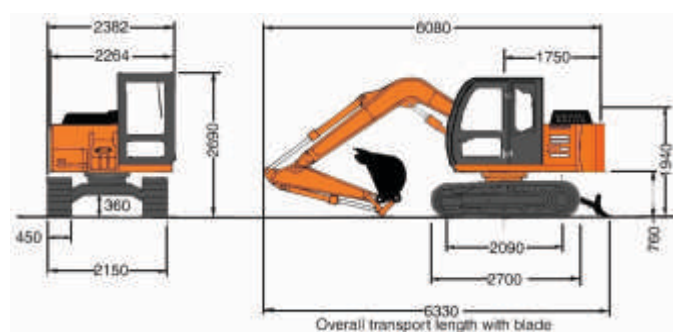
## WORKING RANGES



		3720	
Boom length		1620	2120
Arm length		1620	2120
A	Max. digging reach	6310	6800
A'	Max. digging reach (on ground)	6160	6660
B	Max. digging depth	4150	4660
B'	Max. digging depth (8' level)	3800	4370
C	Max. cutting height	7150	7550
D	Max. dumping height	5070	5470
E	Min. swing radius	1700	2060
F	Max.vertical wall depth	3500	4060

All dimensions are in mm

## DIMENSIONS



All dimensions are in mm

The Specifications are subject to change without prior notice. The Machine depicted may vary from the actual Machine Please contact our nearest office for latest specifications. Accessories shown here are not part of the standard equipment Performance of the machine may vary with site and operating conditions encountered

## Tata Hitachi Construction Machinery Company Private Limited

Registered Office : Jubilee Building 45 Museum Road Bangalore 560 025 India  
 Telephone : +91 80 66953301 02 03 04 05 Fax : +91 80 66953309/25325792  
 E-mail : info@tatahitachi.co.in Website : www.tatahitachi.co.in

Toll Free Number : 1800 121 6633

Authorised Dealer