

SPECIFICATIONS

ENGINE	
Model.....	TATA 697 NA
Type.....	Water cooled, 6-cylinder in-line diesel engine
Engine power.....	76 PS @ 2200 rpm
Max.torque.....	25.4 Kgf-m @ 2000 rpm
Batteries.....	2 X 12V

HYDRAULIC SYSTEM	
Main pumps.....	2 variable displacement axial piston pumps
Flow rate.....	2 X 115 lpm
Pilot pump.....	1 gear pump
Flow rate.....	23 lpm

SUPERSTRUCTURE	
Swing speed.....	11.8 rpm

RELIEF VALVE SETTINGS	
Implement circuit.....	285 kgf/cm²
Swing circuit.....	285 kgf/cm²
Travel circuit.....	355 kgf/cm²
Pilot circuit.....	40 kgf/cm²

UNDERCARRIAGE	
Travel speed .....	0 - 4.3 kmph
Max.traction force.....	7500 kgf
Gradeability.....	35° (70% continuous)
No.of upper rollers (each side).....	1
No. of lower rollers (each side).....	6
No. of track shoes (each side).....	41
Shoe width.....	500 mm

SERVICE REFILL CAPACITIES	
Hydraulic tank.....	72.0 ltr
Hydraulic system.....	126.0 ltr
Fuel tank.....	250.0 ltr
Engine coolant.....	11.0 ltr
Engine oil.....	14.0 ltr
Swing device.....	3.2 ltr
Travel device (Each side).....	3.5 ltr

WEIGHTS AND GROUND PRESSURE		
Machine	Operating weight	Ground pressure
Backhoe	11600 kg	0.40 kgf /cm²
Shovel	11600 kg	0.40 kgf /cm²

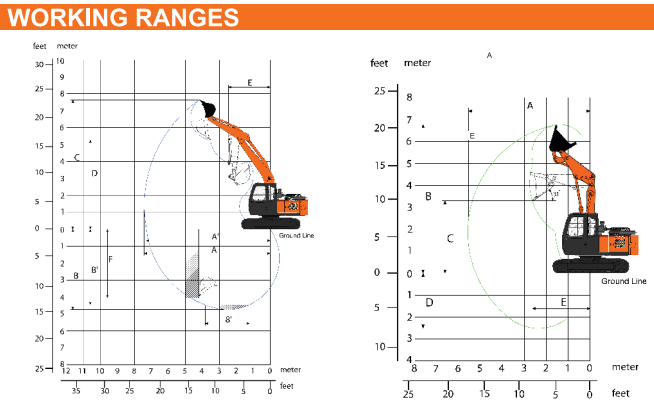
DIGGING FORCE	
BACKHOE	
Bucket digging force .....	7300 kgf
Arm crowd force.....	5400 kgf
SHOVEL	
Max. breakout force.....	7250 kgf
Max. crowding force.....	7800 kgf

The Specifications are subject to change without prior notice. The Machine depicted may vary from the actual Machine Please contact our nearest office for latest specifications. Accessories shown here are not part of the standard equipment Performance of the machine may vary with site and operating conditions encountered

**Tata Hitachi Construction Machinery Company Private Limited**  
Registered Office : Jubilee Building 45 Museum Road Bangalore 560 025 India  
Telephone : +91 80 66953301 02 03 04 05 Fax : +91 80 66953309/25325792  
E-mail : info@tatahitachi.co.in Website : www.tatahitachi.co.in  
**Toll Free Number : 1800 121 6633**

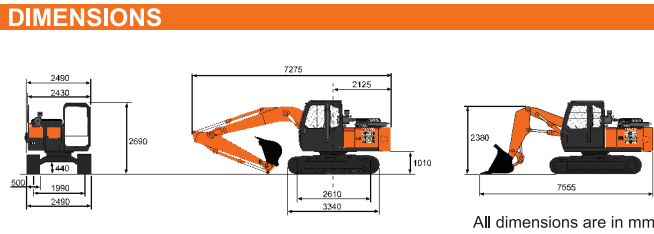
BUCKETS				
BACKHOE				
Bucket type	Capacity (PCSA)	Width without side cutter	Weight	Tooth points
GP	0.60 m³	1034 mm	478 kg	4
HD	0.52 m³	930 mm	525 kg	4
Trench	0.23 m³	490 mm	350 kg	2

SHOVEL			
Capacity	Inner width	Outer width	Weight
0.6 m³	1120 mm	1184 mm	552 kg



BACKHOE		
	Boom length	4250
	Arm length	1950
A	Max. digging reach	7410
A'	Max. digging reach (on ground)	7250
B	Max. digging depth	4720
B'	Max. digging depth (8' level)	4460
C	Max. cutting height	7630
D	Max. dumping height	5280
E	Min. swing radius	2460
F	Max. vertical wall	4040

SHOVEL		
	Boom length	2500
	Arm length	2000
A	Max. digging reach	5560
B	Max. cutting height	6750
C	Max. dumping height	3290
D	Max. digging depth	2520
E	Working radius at dumping height	2630



Authorised Dealer



TATA HITACHI

Reliable solutions

THE WORKHORSE



EX110

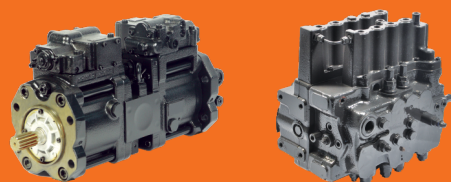
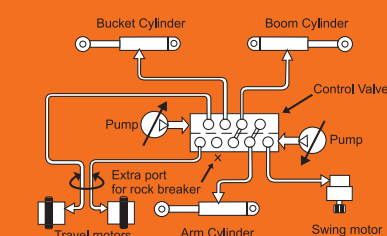
76PS @ 2000rpm | 11,600 kg | 0.23 - 0.60 m³







## SUPERIOR HYDRAULICS



Hitachi's **Optimum Hydraulic System** allows for easy, smooth and swift combined operations which translates into a superior machine performance.

Advanced features such as **Cross-Sensing Summation System** and **Fuel Saving Pump System** result in higher working speeds and help in eliminating hydraulic energy losses.

Hitachi's original pilot circuit features responsive and precise control.

## UNPARALLELED VERSATILITY



EX110 Super series hydraulic excavator, a result of Hitachi's word class design and R&D capability, displays unparalleled versatility in its compatibility with a wide range of attachments and customizations, tailor made for Indian conditions.

A Spare Spool for special attachments is supplied as a part of standard equipment.

Available in Standard Machine, Quarry variant & Shovel variant

## POWER OPTIMIZATION



EX110 is powered by the reliable and fuel efficient Tata 697 NA engine delivering 76 PS @ 2200 rpm.

**Auto Idle & Auto Deceleration** features enable reduction in fuel consumption, thereby lowering operational costs.

**Power Mode selection** feature helps the operator to select the right engine rpm to match his operating needs, thereby optimizing usage of engine power.

**EP mode:** Reduced engine speed for light duty operation for enhanced fuel savings.

**HP mode:** Higher engine power to increase productivity for quicker completion of job.



## EFFICIENCY BOOSTERS



- Ergonomically designed roomy cabin with superior visibility
- Reduced engine hood height
- Improved aesthetics
- Hydramounts for cabin mounting
- Wiper with window washer
- Ergonomically designed operator seat with weight adjustment
- New control levers and display monitor
- Dial type throttle control
- FM, USB enables media player with speakers
- Fan and LED light in cabin
- Mobile charger port
- Cyclonic pre cleaner

## RETURN ON INVESTMENT



The EX100/EX110 with an installed base of over 10,000 machines working in a wide variety of applications in various geographies across India, has been commanding the **highest resale value in its class**.

Auto Idle, Auto Deceleration and Mode Selection result in enhanced fuel savings thereby lowering operation costs.

2500 hrs hydraulic oil change interval reduces the operating cost of the EX110.

The superior design of EX110 Super series hydraulic excavator, ensures ease in serviceability thereby leading to minimal downtime for maintenance resulting in higher profits for customers.