



TATA HITACHI

Reliable solutions

MINING SOLUTIONS



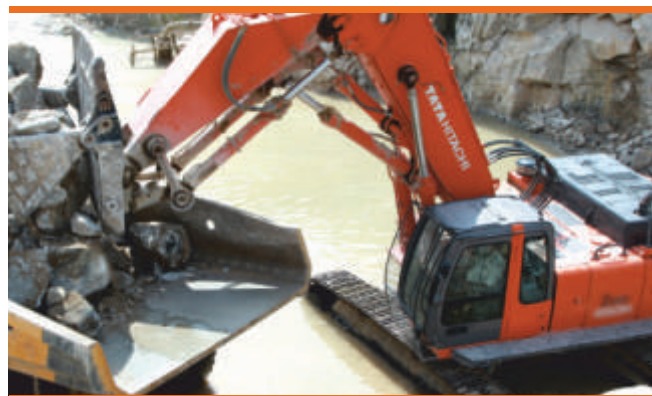
Excavators

“When you want higher productivity coupled with best in class fuel economy, Tata Hitachi Mining Excavator range is the best choice for you. It combines proven designs with the latest technological advances to ensure higher efficiency, reliability and durability for all kinds of jobs. You get strong horsepower, an efficient engine, a comfortable cab, advanced hydraulics, rugged structures, powerful arm and bucket-digging forces and many more.

These Excavators are available in backhoe and Shovel configuration, moreover you can choose from variety of buckets and attachments, for various site conditions.”



Model	: ZX 470H Backhoe
Engine Rated Power	: 235 kW (320 HP)
Operating Weight	: 47100 kg
Bucket Capacity	: 1.9 - 3.1 m ³
Boom and Arm (BE*)	: 6.3 m and 2.5 m



Model	: ZX 470H Shovel
Engine Rated Power	: 235 kW (320 HP)
Operating Weight	: 47100 kg
Bucket Capacity	: 2.6 m ³



Model	: ZX 650H Backhoe
Engine Rated Power	: 295 kW (400 HP)
Operating Weight	: 58340 kg
Bucket Capacity	: 3.3 - 3.8 m ³
Boom and Arm (BE*)	: 6.6 m and 2.9 m



Model	: ZX 650H Shovel
Engine Rated Power	: 295 kW (400 HP)
Operating Weight	: 60500 kg
Bucket Capacity	: 3.0 - 4.0 m ³



Model	: ZX 870H-5G Backhoe
Engine Rated Power	: 360 kW (483 HP)
Operating Weight	: 82300 kg
Bucket Capacity	: 2.2 - 4.5 m ³
Boom and Arm (BE*)	: 7.1 m and 2.95 m

BE* : Bulk Excavation

Excavators



Model	: EX 1200-V Backhoe
Engine Gross Power	: 567 kW (760 HP)
Operating Weight	: 109000 kg
Bucket Capacity	: 5.0 - 6.5 m ³
Boom and Arm (BE*)	: 7.55 m and 3.4 m



Model	: EX 1200-V Loading Shovel
Engine Gross Power	: 567 kW (760 HP)
Operating Weight	: 111000 kg
Bucket Capacity	: 5.9 - 6.5 m ³



Model	: EX1900-6 BH	EX1900E-6
Power Mode	: Diesel Engine	Electric Motor
Power Output	: 810 kW (1086 HP)	610 kW
Operating Weight	: 192000 kg	192000 kg
Bucket Capacity	: 12 m ³	
Boom and Arm (BE*)	: 8.3 m and 3.6 m	



Model	: EX 1900-6 LD	EX1900E-6
Power Mode	: Diesel Engine	Electric Motor
Power Output	: 810 kW (1086 HP)	610 kW
Operating Weight	: 192000 kg	191000 kg
Bucket Capacity	: 8.8 - 12.0 m ³	



Model	: EX2600-7 BH	EX2600E-6
Power Mode	: Cummins Engine MTU Engine	Electric
Power output	: 1119kW (1500HP) 1150kW(1542)	860kW
Operating Weight	: 256000 kg 258000 kg	250000 kg
Bucket	: 17m ³	
Boom and Arm	: 8.7m and 3.9m	



Model	: EX2600-7 LD	EX2600E-6
Power Mode	: Cummins Engine MTU Engine	Electric
Power output	: 1119kW (1500HP) 1150kW(1542)	860kW
Operating Weight	: 258000 kg 260000 kg	248000 kg
Bucket	: 15.0m ³ - 16.5m ³	

BE* : Bulk Excavation

Excavators



Model	: EX 3600-6 BH	EX 3600E-6
Power Mode	: Diesel Engine	Electric Motor
Power Output	: 1450 kW (1944 HP)	1200 kW
Operating Weight	: 359000 kg	353000 kg
Bucket Capacity	: 22 m ³	
Boom and Arm (BE*)	: 9.6 m and 4.5 m	



Model	: EX 3600-6 LD	EX 3600E-6
Power Mode	: Diesel Engine	Electric Motor
Power Output	: 1450 kW (1944 HP)	1200 kW
Operating Weight	: 362000 kg	350000 kg
Bucket Capacity	: 21 - 23 m ³	



Model	: EX5600-7 BH	EX5600E-6
Power Mode	: Cummins Engine MTU Engine	Electric
Power output	: 2x1119kW (1500HP) 2x1150kW(1542)	2x860kW
Operating Weight	: 549000 kg	
Bucket	: 34m ³	
Boom and Arm	: 10.1 m and 5.0m	



Model	: EX5600-7 LD	EX5600E-6
Power Mode	: Cummins Engine MTU Engine	Electric
Power output	: 1119kW (1500HP) 1150kW(1542)	2x860kW
Operating Weight	: 544000kg	
Bucket	: 27m ³ -29m ³	



Model	: EX 8000-6 BH	EX 8000E-6
Power Mode	: Diesel Engine	Electric Motor
Power Output	: 2900 kW (3888 HP)	2 x 1200 kW
Operating Weight	: 837000 kg	8080000 kg
Bucket Capacity	: 40 - 45 m ³	
Boom and Arm (BE*)	: 8.7 m and 3.9 m	



Model	: EX 8000-6 LD	EX 8000E-6
Power Mode	: Diesel Engine	Electric Motor
Power Output	: 2900 kW (3888 HP)	2 x 1200 kW
Operating Weight	: 810991 kg	820000 kg
Bucket Capacity	: 40 m ³	

BE* : Bulk Excavation

Rigid Dump Trucks

Rigid Dump Trucks (RDT) are productive off-road vehicles that are a perfect complement to our hydraulic excavators. A number of unique features makes them highly reliable in a variety of major operations. RDT are engineered for heavy-duty application such as construction, quarrying and mining, with superior hauling capabilities and industry leading technology. These RDTs are designed with fuel efficiency, longevity and ease of operation at the forefront of manufacturing and boast a number of features that support these principles. The RDTs are equipped with advanced suspension systems, unique body design and a reliable electrical system, in order to ensure a quality product of strength and control.



Model	: EH 600
TGMOW	: 58490 kg
Net Machine Weight	: 26490 kg
Maximum Payload	: 35.3 tons
Tires	: Bias Ply 18.00 - 25 (32) E3
Engine Rated Power	: 289 kW (400 HP)
Drive	: Allison CLT754



Model	: EH 3500AC-3
TGMOW	: 322000 kg
Net Machine Weight	: 120000 kg
Maximum Payload	: 200 tons
Tires	: 37.00 R57
Engine Rated Power	: 1491 kW (2000 HP)
Drive	: Hitachi AC Drive, IGBT



Model	: EH 4000AC-3
TGMOW	: 384000 kg
Net Machine Weight	: 162000 kg
Maximum Payload	: 221 tons
Tires	: 40R57, 46R57
Engine Rated Power	: 1864 kW (2500 HP)
Drive	: Hitachi AC Drive, IGBT



Model	: EH 5000AC-3
TGMOW	: 500000 kg
Net Machine Weight	: 204000 kg
Maximum Payload	: 296 tons
Tires	: 53/80 R63
Engine Rated Power	: 2125 kW (2850 HP)
Drive	: Hitachi AC Drive, IGBT

Wheel Loader

Hitachi's wheel loaders give you safe, easy operation so that even beginners can work like veteran operators. These user and environmentally friendly machines give you the productivity you need to get the job done.



Model	: ZW 220
Max. Engine Output	: 164 kW (220 HP)
Operating Weight	: 17010 - 17580 kg
Bucket Capacity	: 2.7 - 4.5 m ³



Model	: ZW 370
Max. Engine Output	: 268 kW (359 HP)
Operating Weight	: 30370 - 31100 kg
Bucket Capacity	: 4.3 - 7.5 m ³



Model	: ZW 550
Max. Engine Output	: 360 kW (483 HP)
Operating Weight	: 451300 - 45960 kg
Bucket Capacity	: 6.0 - 10.0 m ³

Global e-Service

"Global e-Service Owner's Site" is a web application developed by Hitachi Construction Machinery Co. exclusively for use by customers. You can remotely watch and manage your machines in "Owner's Site". It facilitates reduction of running cost and increase in productivity. It contributes to creating efficient and assured business environment.



By "visualizing" the management of machines, your operational efficiency goes up.

With use of "Global e-Service Owner's Site," you can efficiently manage your machines from your office with no hassle. In addition, you can customize its home page to suite your needs by use of the widget function. You can get the information you need displayed in front of you at any time.

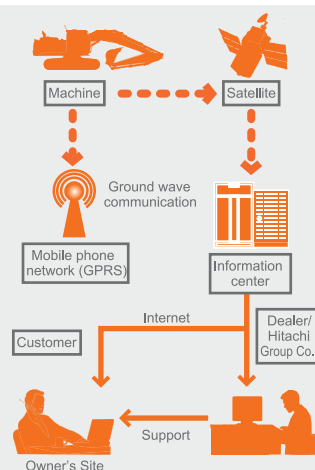
Main types of information provided in "Global e-Service Owner's Site."

<ul style="list-style-type: none"> - Machine management information - Machine operating data (hour meter readings (operating hours) and other data) 	<ul style="list-style-type: none"> - Fuel consumption and remaining amount - CO₂ emission amount - Recommended inspection timings 	<ul style="list-style-type: none"> - Maintenance history - Machine's geographical location and its history - Available information and data may vary depending on machine models and the presence or absence of a communication terminal device.
---	---	---

Globale-Service



Mechanism of "Global e-Service"



Operating data of a machine is sent from its terminal device to the Hitachi information center through a mobile phone network or a satellite communication network. The data are processed and stored in "Global e-Service". They are available in easy-to see formats through "Owner's Site" at any desired time.

Consite

**SOLUTIONS SHOULD ADVISE.
NOT JUST REPORT.**

ConSite

SMART REMOTE MACHINE MANAGEMENT



PERFORMANCE ANALYSIS

Benchmarking your machine against similar class machines in the region



MONTHLY REPORT VIA E-MAIL

Know everything about your machine & how to increase productivity while reducing costs



CAUTION ALARM

Pre-emptive information of your machine's health



EMERGENCY ALARM

Real time notification to you and the dealer to avoid machine breakdowns



SITE EFFICIENCY PARAMETERS

Advises you on ways to fine tune everyday operations



Support Solutions

Full Maintenance Contract by Tata Hitachi is a fully customized service offering for customers having large fleet of machines. Designed to meet specific requirement of individual customers. It maximizes the production by ensuring maximum machine utilization.



Objectives

- Maximize Equipment Availability
- Minimize operating cost through planned maintenance
- Enhanced Reliability and maintainability through monitoring of MTTR and MTBF
- Technical skill development of customer personnel
- Extend Equipment life to maximize returns on investment

Benefits

- Higher Productivity through increased utilization
- Life cycle maintenance cost known at the start of the contract
- Allows customer to concentrate on their core activity
- Higher Equipment availability resulting in leaner fleet size
- Improved cost efficiency through higher utilization and extended equipment life.
- Better resale value of equipment



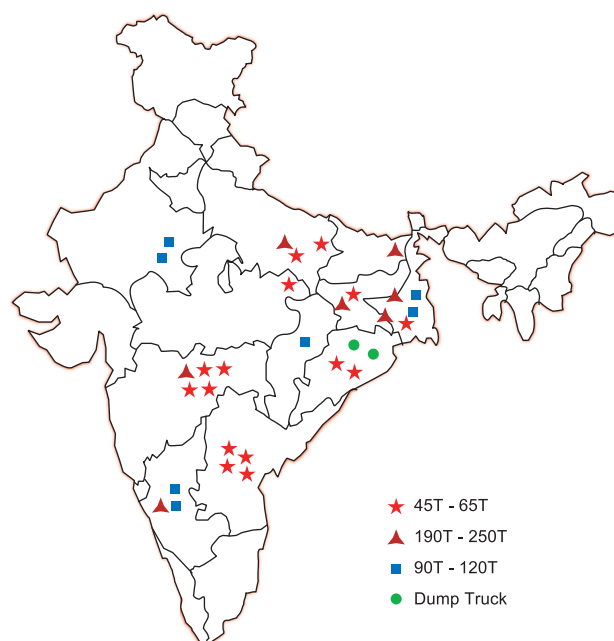
	ASC	AMC	FMC
Project Manager / Engineer	✓	✓	✓
Machines and Helpers Team		✓	✓
General Parts			✓
Consumables			✓
Lubricants			✓
Site Support Infrastructure		✓	✓
Vehicle for team movement		✓	✓
Equipment Availability Guarantee			✓
Value Adds	✓	✓	✓

ASC : Annual Service Contract

AMC : Annual Maintenance Contract

FMC : Full Maintenance Contract

Machine Population under Full Maintenance Contract (FMC) widespread distribution of contracts



Activities

- 24x7 Services and spare at site
- Daily Maintenance - Walk around checks, oil level checks, greasing of front attachment joints.
- Scheduled Maintenance - Periodic maintenance and replacement of components and sub assemblies as per guide lines.
- Condition Monitoring - Performance checks, schedule Oil Sampling (SOS) & analysis, Data download and analysis, periodic visual checks and ultrasonic tests
- Parts inventory management
- Modification or upgradation - based on continuous improvements inputs from design safety bodies etc. for improvement in reliability and safety.

Wenco

At Wenco, we want to raise the mine's performance. That means using data technology to help mines produce more, stall less, and smoothly and safely. For 30 years, we've built solutions that mines around the world thrive on, Fleet management for total control, Dispatching for easier, automated assignments, Machine guidance for precise cutting and filling, Our latest systems go even further, We've moving beyond the pit, creating the next generation of technology set to chage the future of mining, Analytics, E-learning, Intelligent proximity, Predictive machine health, Autonomous trucking, with the power of Hitachi behind us, we're crafting new ways to make mining smarter, simpler, and safer for everyone - from the pit to the port.



Mine Performance Suite

Production Management

Dispatching

Maintenance

Machine Control

Collision Avoidance

Business Intelligence



Wencomine FMS
Wencolite FMS
Scalable Solution
Quarry, Contractor, Mine
Operations, Maintenance, HR,
Admin, Safety



Dynamic Dispatch
Ore Control
Fuel Dispatch
Activity Dispatch



Real-time Alarms
Tyre Health and Inventory
Down Management
Predictive Machine Health



Loading Units
Dozers
Drills
Integrated or Standalone



Asset Tracking
Navigation
Awareness
Collision Avoidance



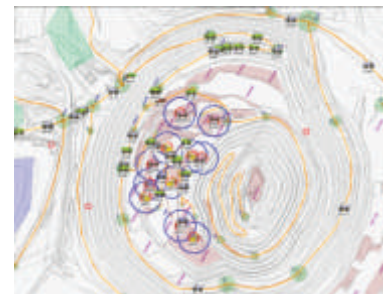
Data Warehouse
Visualisations
Multi-site Reporting
BI Services



Operator Panel Display



Monitoring and Display



Live Fleet Positioning

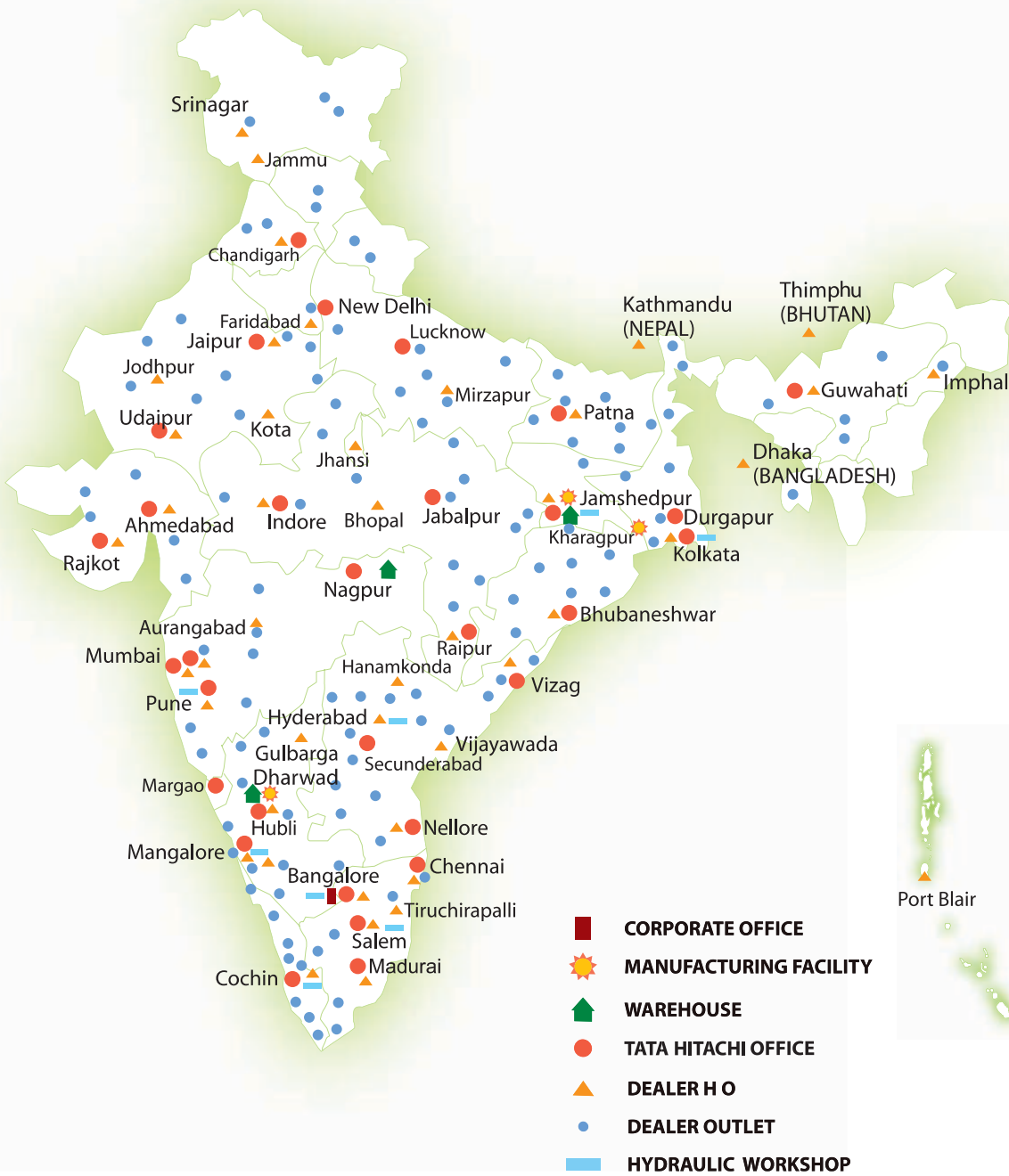


Hardware

Equipments in Operation



OUR NETWORK



These specifications are subject to change without notice.
 Illustrations and photos show the standard models, and may or may not include optional equipment, accessories, and all standard equipment with some differences in color and features.
 Before use, read and understand the Operator's Manual for proper operation.

Authorised Dealer

Tata Hitachi Construction Machinery Company Private Limited
 (Formerly non as Tata Hitachi Construction Machinery Company Limited)
 Registered Office: Jubilee Building 45 Museum Road Bangalore 560 025 India
 Telephone: +91 80 66953301 02 03 04 05 Fax: +91 80 6695 3309 2532 5792
 Email: info@tatahitachi.co.in Website: www.tatahitachi.co.in
Toll Free: 1800 121 6633